



**WETHERELL**  
MAYFAIR'S FINEST PROPERTIES



## Chesterfield Gardens, W1J

**£5,417 PCM**

This two double bedroom, two bathroom apartment is located in this popular apartment block with 24-hour porter and lift.

Situated within Mayfair's most sought after purpose build block this property comprises two double bedrooms both with en-suites.

There is a large reception room with space for dining and entertaining guests and a separate modern kitchen within the apartment. The bedrooms come with ample storage and light throughout the property.

The apartment is ideal for a couple that requires a second bedroom for guests or for two professional shares as both bedrooms are of a similar size each with a private bathroom.

---

In the heart of Mayfair this property is close to the green spaces of Hyde Park, Green Park and the world famous shops and restaurants of Mayfair.

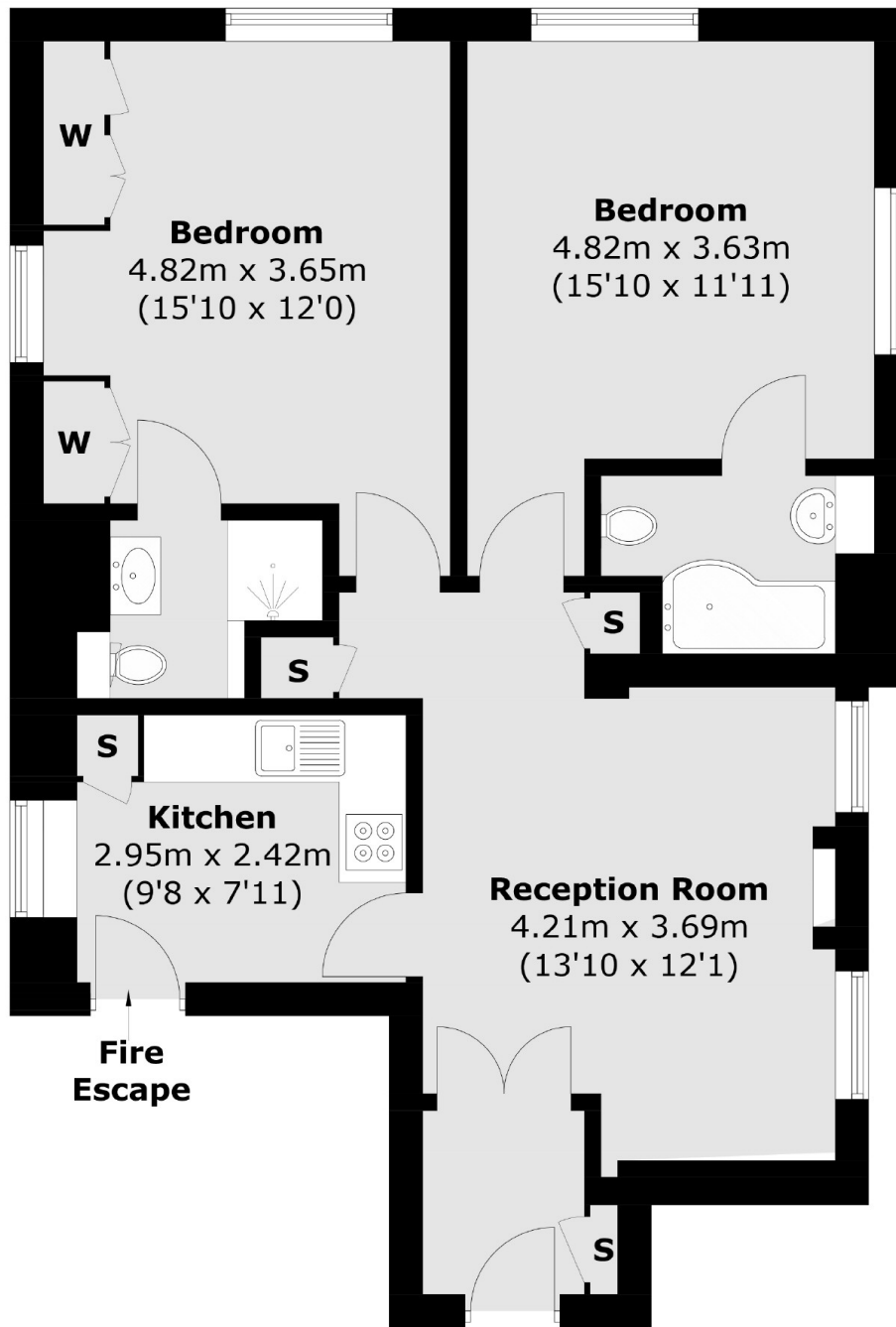


## FEATURES

- Two Double Bedrooms • Two En Suite Bathrooms • Separate Kitchen • 24-Hour Porter • Lift Access • Excellent Location •



Chesterfield Gardens,  
London, W1J



**Fourth Floor**

Total area (approx.): 70.2 sq. m (755.6 sq. ft)



**WETHERELL**  
MAYFAIR'S FINEST PROPERTIES

102 Mount Street,  
London, W1K 2TH

T: 020 7529 5588  
E: rentals@wetherell.co.uk

We aim to make our particulars both accurate and reliable. However they are not guaranteed; nor do they form part of an offer or contract. If you require clarification on any points then please contact us, especially if you're traveling some distance to view. Please note that appliances and heating systems have not been tested and therefore no warranties can be given as to their working order.



wetherell.co.uk