



## Hemming Street, E1

£525,000

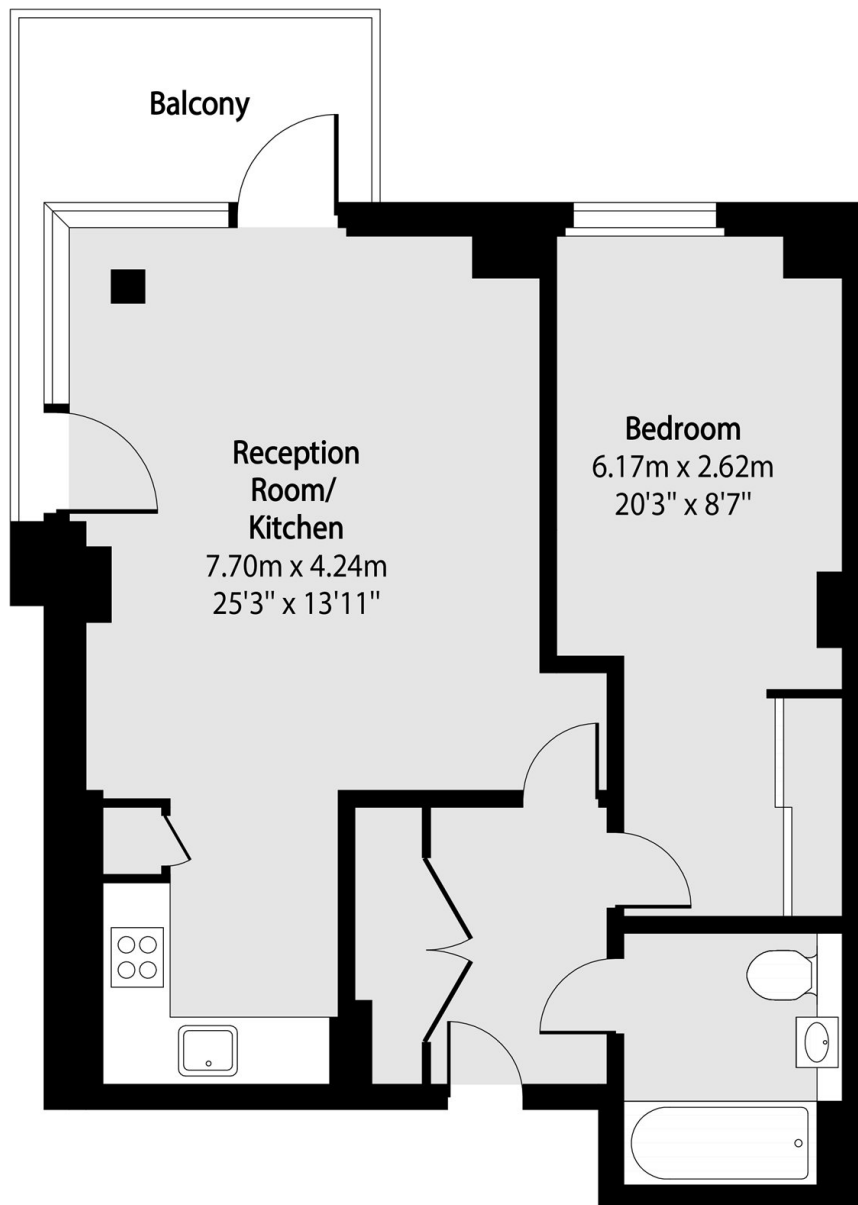
Set on the 6th floor the apartment features a spacious living area and open-plan kitchen with high-quality integrated appliances, opening onto a private balcony, ideal for relaxing or entertaining with far reaching views. The double bedroom offers generous built-in storage and its own balcony access, while large windows fill the space with natural light throughout the day. Spacious bathroom completes the property, designed with modern fittings and sleek finish.

Positioned between Bethnal Green and Brick Lane, this stylish one-bedroom flat offers contemporary living in one of London's most vibrant neighbourhoods. Convenient transport links via Bethnal Green (Windrush & Central Lines) and Whitechapel (Elizabeth, District, Hammersmith&City Lines) place the rest of London at your doorstep.

### Features

- One Double Bedroom
- Underfloor Heating
- Private Balcony
- Open Plan and Modern Design
- Natural Light
- Communal Roof Terrace

Hemming Street,  
London, E1



Total area (approx): 54.44 sq m (586 sq. ft)

Balcony total area (approx): 6.04 sq m (65 sq. ft)

**Dexters**

Shoreditch  
44 Great Eastern Street  
London  
EC2A 3EP  
Sales  
0207 483 6371

Energy Rating: B. We aim to make our particulars both accurate and reliable. However they are not guaranteed; nor do they form part of an offer or contract. If you require clarification on any points then please contact us, especially if you're traveling some distance to view. Please note that appliances and heating systems have not been tested and therefore no warranties can be given as to their good working order.

 **RICS** | Regulated  
Estate Agent  
and Letting Agent

dexters.co.uk