



**Holly Tree Lodge, The Ridgeway, Enfield, EN2 8QT**



**welcome to**

## **Holly Tree Lodge, The Ridgeway, Enfield**

Barnfields are delighted to offer for sale this spacious two bedroom, two bathroom first floor apartment in this popular block situated on Enfield Ridgeway. Located within walking distance of both Enfield Chase and Gordon Hill Overground Stations, Enfield Town Shopping Centre plus Oakwood Tube Station is also a short bus ride away.

This chain free property must be viewed!



### **Communal Entrance**

Opens to the pleasant communal entrance hall with lift service and stairs to all floors.

### **First Floor**

#### **Flat Door**

Opens To:-

#### **Hallway**

Fitted carpet, radiator, two built-in cupboards.

#### **Lounge**

17' 4" x 13' ( 5.28m x 3.96m )

Fitted carpet, radiator, sliding double glazed doors to rear South Easterly facing balcony.

#### **Kitchen**

9' 10" x 7' 9" ( 3.00m x 2.36m )

Range of fitted wall and base units with toning worktops, sink and drainer, space for fridge freezer, integrated dishwasher, plumbing for washing machine, cupboard housing boiler, double glazed window to side, gas hob with oven below and extractor above, tiled floor.

#### **Bedroom One**

13' x 11' 4" ( 3.96m x 3.45m )

Fitted carpet, range of built-in wardrobes and cupboards, radiator, sliding double glazed patio doors to South Westerly facing balcony, door to:-

#### **En-Suite**

Step-in shower unit, pedestal wash hand basin, low level WC, fully tiled walls, vinyl flooring.

#### **Bedroom Two**

15' 7" x 6' 10" ( 4.75m x 2.08m )

Range of fitted wardrobes and units, fitted carpet, double glazed window to side, radiator.

#### **Bathroom**

Panelled bath with shower above, low level WC, pedestal wash hand basin, part tiled walls, vinyl flooring.

#### **Outside**

#### **Parking**

Allocated parking space to rear of the block plus additional spaces are available on a first come first served basis.



***view this property online*** [barnfields.co.uk/Property/ENF105426](http://barnfields.co.uk/Property/ENF105426)





welcome to

## Holly Tree Lodge, The Ridgeway, Enfield

- Two Bedrooms
- Spacious Lounge
- Fitted Kitchen
- Two Bathrooms
- First Floor & Lift Access

Tenure: Leasehold EPC Rating: C

Council Tax Band: E Service Charge: 2343.00

Ground Rent: 125.00

This is a Leasehold property with details as follows; Term of Lease 125 years from 25 Dec 1993. Should you require further information please contact the branch. Please Note additional fees could be incurred for items such as Leasehold packs.

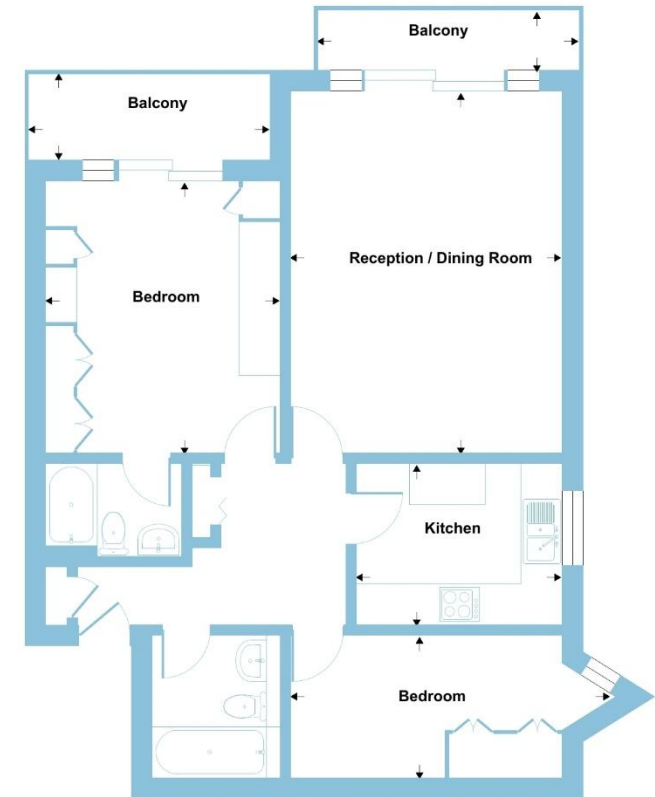
# £375,000



Please note the marker reflects the postcode not the actual property

## Holly Tree Lodge, The Ridgeway, Enfield, EN2

Approximate Area = 729 sq ft / 67.7 sq m  
For identification only - Not to scale



FIRST FLOOR

Floor plan produced in accordance with RICS Property Measurement 2nd Edition, incorporating International Property Measurement Standards (IPMS2 Residential). © nichicom 2026. Produced for Barnard Marcus. REF: 1429493



check out more properties at [barnfields.co.uk](https://www.barnfields.co.uk)



Property Ref:  
ENF105426 - 0005

1. MONEY LAUNDERING REGULATIONS Intending purchasers will be asked to produce identification documentation at a later stage and we would ask for your co-operation in order that there is no delay in agreeing the sale. 2. These particulars do not constitute part or all of an offer or contract. 3. The measurements indicated are supplied for guidance only and as such must be considered incorrect. Potential buyers are advised to recheck measurements before committing to any expense. 4. We have not tested any apparatus, equipment, fixtures or services and it is in the buyers interest to check the working condition of any appliances. 5. Where an EPC, or a Home Report (Scotland only) is held for this property, it is available for inspection at the branch by appointment. If you require a printed version of a Home Report, you will need to pay a reasonable production charge reflecting printing and other costs. 6. We are not able to offer an opinion either written or verbal on the content of these reports and this must be obtained from your legal representative. 7. Whilst we take care in preparing these reports, a buyer should ensure that his/her legal representative confirms as soon as possible all matters relating to title including the extent and boundaries of the property and other important matters before exchange of contracts.

Barnfields is a trading name of Sequence (UK) Limited which is registered in England and Wales under company number 4268443, Registered Office is Cumbria House, 16-20 Hockliffe Street, Leighton Buzzard, Bedfordshire, LU7 1GN. VAT Registration Number is 500 2481 05.



020 8363 3394



info@barnfields.com



1a Windmill Hill, Enfield, Middlesex, EN2 6SE



[barnfields.co.uk](https://www.barnfields.co.uk)