



Ennismore Gardens, SW7

£5,000,000

Dexters



Ennismore Gardens, SW7

Having undergone a high standard refurbishment, this stunning lateral apartment is accessed through a direct lift up to the fifth floor. There is plenty of natural light throughout the property with high ceilings, further adding to its charm.

The three bedrooms each have en-suite marble bathrooms, with an additional guest WC. The principle bedroom also features a shared walk-in wardrobe. The semi open plan kitchen has Gaggenau integrated appliances offering exceptional convenience. This property also benefits from a large and open reception room with high ceilings and parquet flooring throughout.

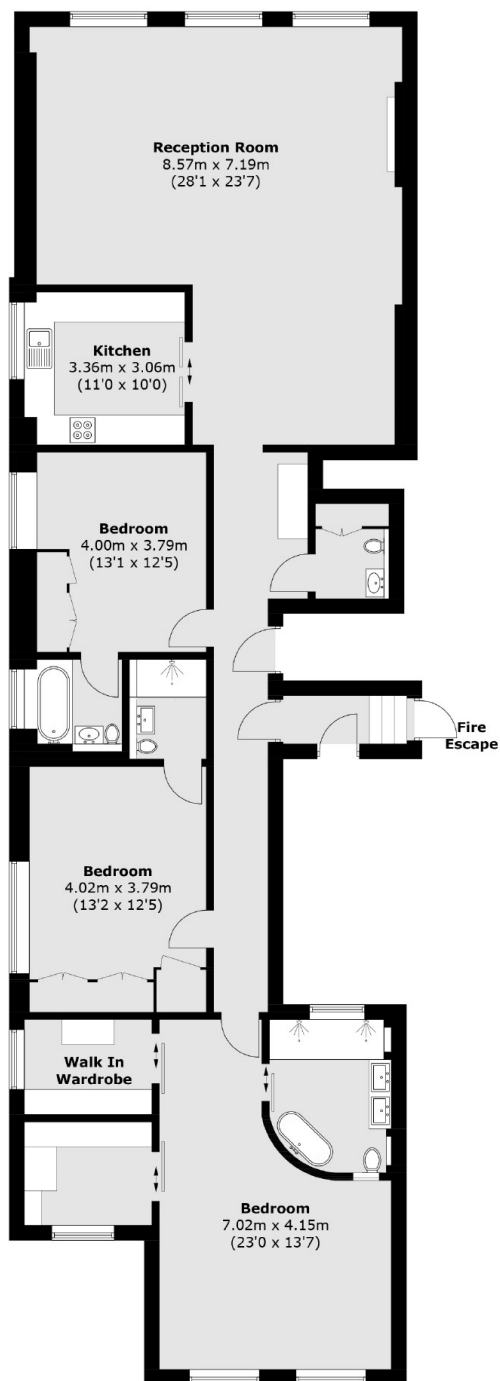
Ennismore Gardens is a tranquil, private, residents-only square located in Knightsbridge with easy access to South Kensington and Hyde Park. The shops and amenities of Knightsbridge and South Kensington are all within a short walk away with close proximity to its tube stations.

Features

- Three Double Bedrooms
- Access To Communal Gardens
- High Ceilings
- Three Bathrooms
- Direct Lift Access
- Porter



Ennismore Gardens, London, SW7



Total area (approx.): 169.2 sq. m (1,821.2 sq. ft)