



Huntley Close, Greenwich, London SE10 9GJ



# Huntley Close, Greenwich SE10

Leasehold (116 years remaining)

Charming modern maisonette in Maritime Greenwich offering sophisticated living across two floors. Features private balcony with sweeping London views, spacious layout, and exceptional World Heritage location steps from Royal Greenwich Park.

## Key Features

- 2 Double bedrooms
  - 2 Bathrooms + separate WC
  - Off street parking
  - Council Tax: **E**
  - Service Charge: **£1,540 P/A**
  - Ground Rent: **£417.60 P/A**
  - Excellent transport links
  - EPC: **B**
- 

This thoughtfully arranged two-bedroom home unfolds across ground and first floors, offering a sophisticated layout that maximises both space and natural light. The accommodation includes two generously proportioned double bedrooms and two full bathrooms, complemented by a separate guest WC for added convenience. The property's crown jewel is undoubtedly the private balcony, which commands far-reaching views across London's skyline, providing an elevated sanctuary perfect for morning coffee or evening relaxation.

The home's substantial 1,031 square feet ensures comfortable living throughout. The dual-level configuration creates natural separation between living and sleeping areas, enhancing both privacy and the sense of space within this distinguished residence.

Transport connections are exemplary, with both Cutty Sark DLR and Greenwich National Rail stations providing swift access to Canary Wharf, the City, and Central London.







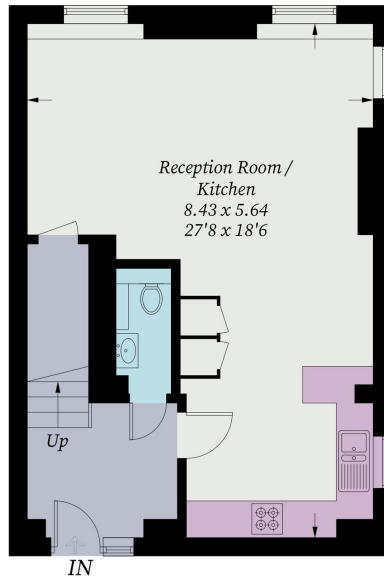




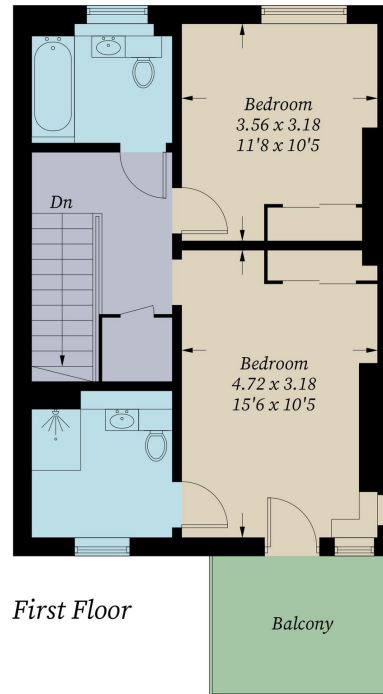


## Huntley Close, SE10

Approximate Gross Internal Area = 95.8 sq m / 1031 sq ft



*Ground Floor*



*First Floor*

Illustration for identification purposes only, measurements are approximate, not to scale. Fourlabs.co © (ID1273648)