



St. Barts Road, Sandwich

Guide Price £250,000

DOMINIC MURPHY POWERED BY exp TM UK

@ dominic.murphy@exp.uk.com

🌐 dominicmurphy.exp.uk.com

☎ 01304 746 016

St. Barts Road, Sandwich

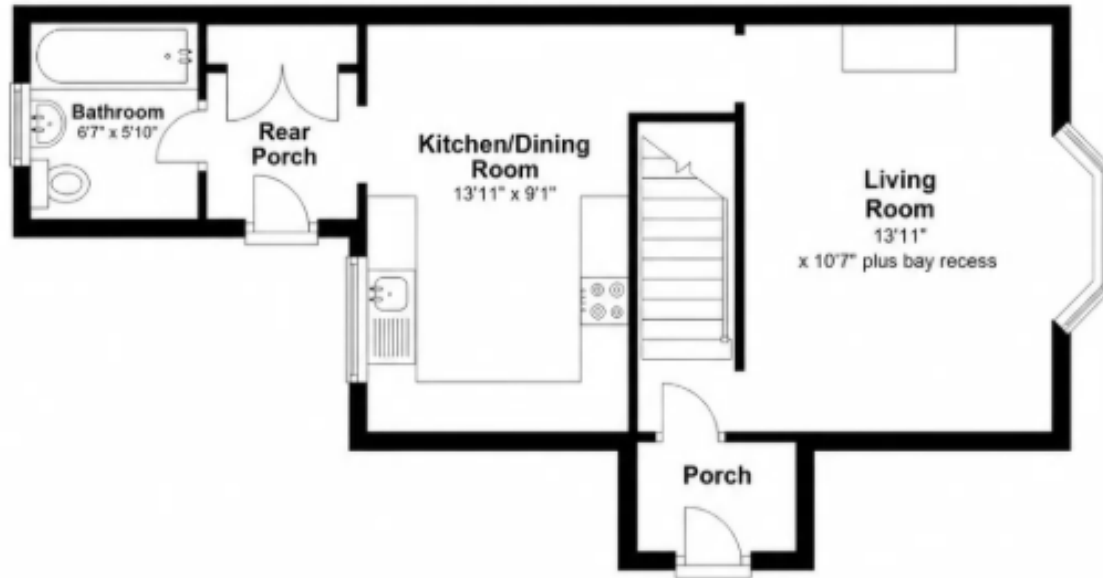
Charming Two-Bedroom Semi-Detached Home with Parking in Historic Sandwich



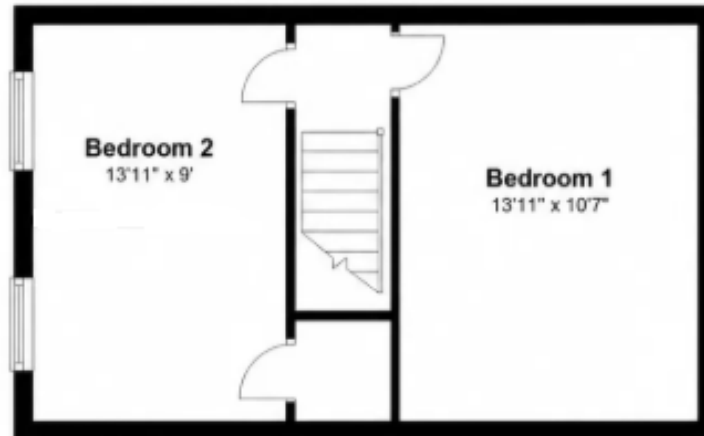




Ground Floor
Approx. 431.6 sq. feet



First Floor
Approx. 329.6 sq. feet



Total area: approx. 761.2 sq. feet