



HW

ESTATE AGENTS

Second Avenue, Hove
£325,000



Second Avenue

Hove

Well-presented 2-bed lower ground floor flat in central Hove, near seafront and Church Road. Spacious open plan living, modern kitchen, tiled bathroom. Close to shops, transport, and Hove Lawns.

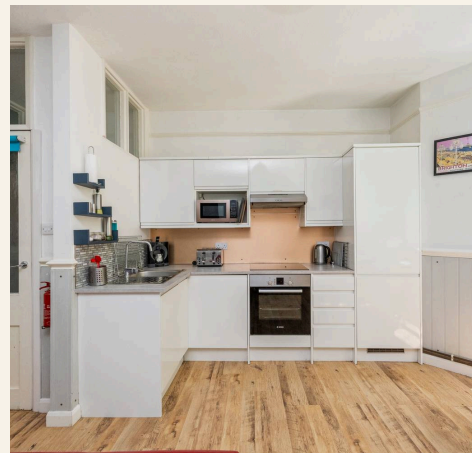
Council Tax band: B

Tenure: Leasehold

EPC Energy Efficiency Rating: D

EPC Environmental Impact Rating: D

- Lower Ground Floor Apartment in Attractive Period Building
- Two Bedrooms
- Modern Open Plan Kitchen / Living Space
- Contemporary Fully Tiled Bathroom Suite
- Bright Bay Fronted Living Area
- Ideal Holiday Let, Second Home or Investment Purchase
- Close to Hove Lawns, Church Road & Local Amenities
- Prime Second Avenue Location Moments from Hove Seafront
- Chain free



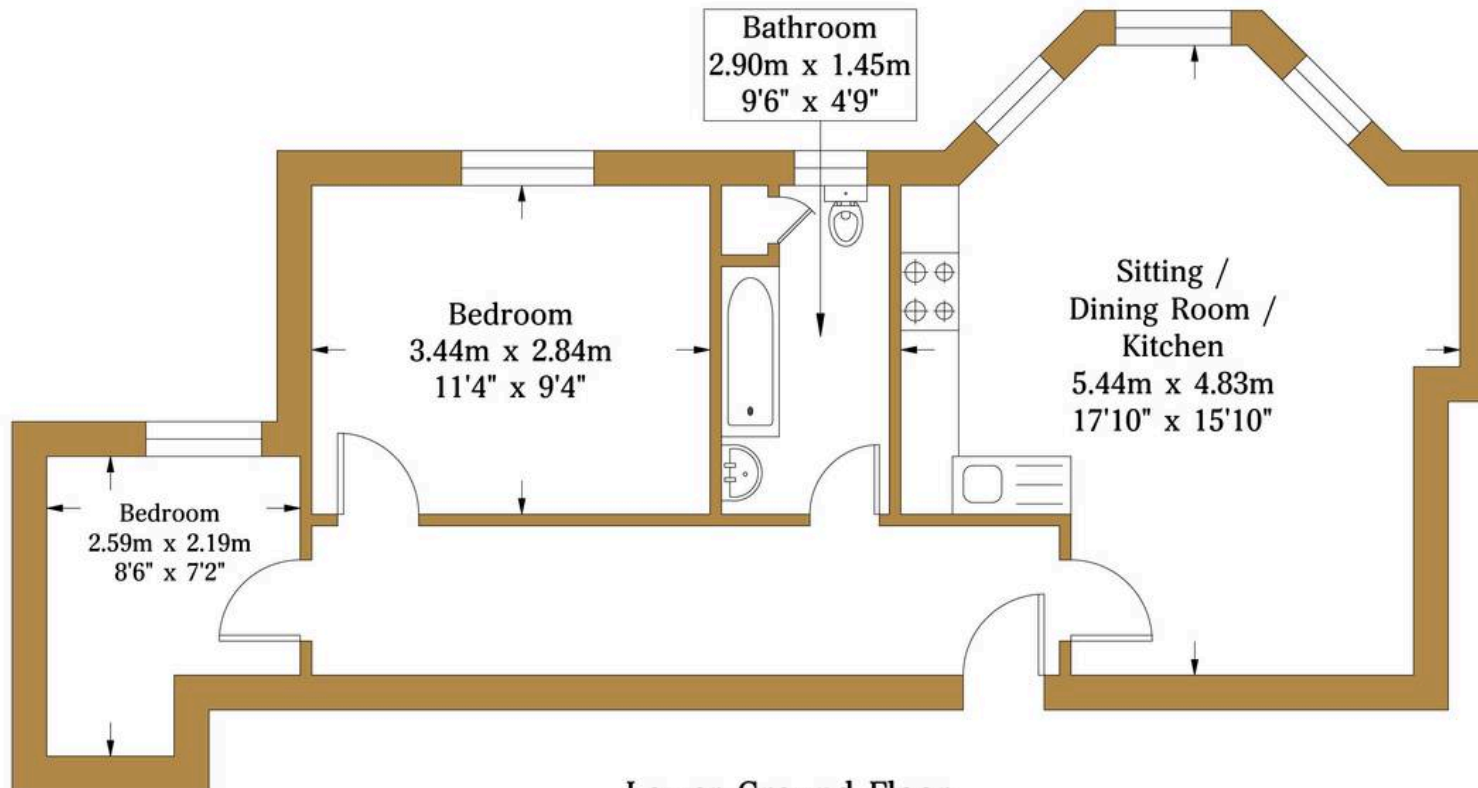


Second Avenue

Approx. Gross Internal Area:- 49.02 sq.m. 527.64 sq.ft.

HW

HAWKINS WATTS WINNARD



Lower Ground Floor
Approximate Floor Area
527.64 sq ft
(49.02 sq m)



Illustration for identification purposed only, measurements are approximate, not to scale.

© hwestateagents



HW Estate Agents

HW Estate Agents, 80 Goldstone Villas, Hove - BN3 3RU

01273 359000 · hove@hwestateagents.co.uk · www.hwestateagents.co.uk

HW

ESTATE AGENTS