



31 Draycott Avenue | | LONDON | SW3 3BS

£2,562 Per month

ESON2
REAL ESTATE

Key features

- Open-Plan Living
- High-End Kitchen
- gym facilities
- Smart Design
- On-site Gym
- Communal Workspace

Description

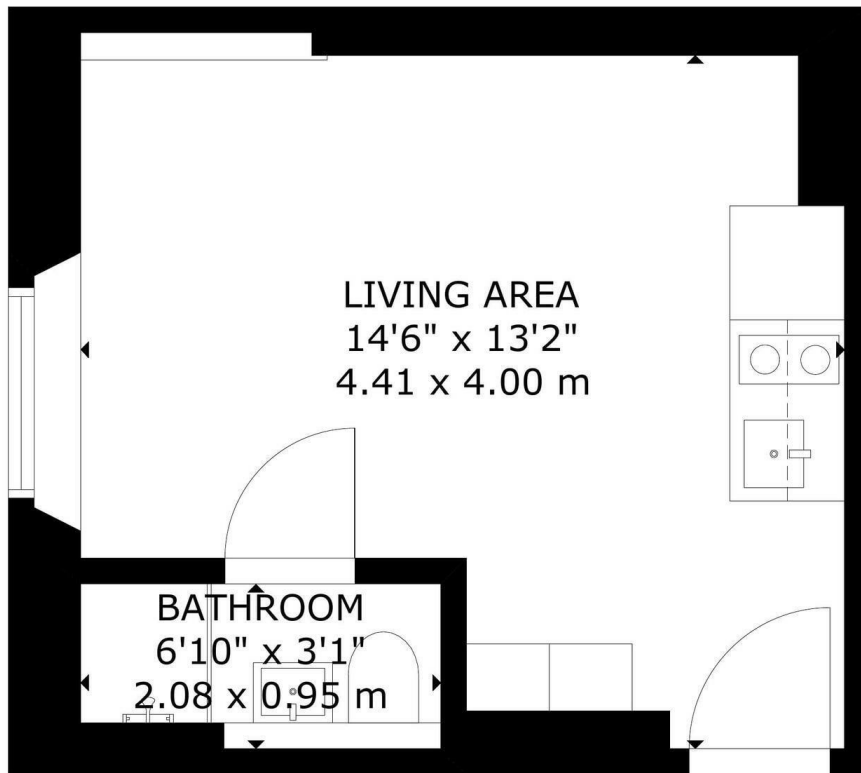
This newly renovated Chelsea studio offers modern interiors, a study room, premium appliances, and a luxury bathroom. With built-in storage and excellent transport links, it's a perfect choice for those seeking upscale living near King's Road.



Directions

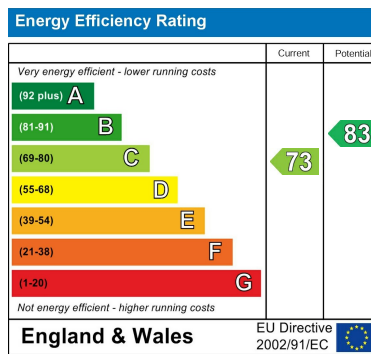
This newly renovated studio apartment, located in Chelsea, offers a sleek and functional living space with modern interiors and an open-plan layout that maximizes both space and natural light, creating a stylish and welcoming atmosphere.

Floor plans



GROSS INTERNAL AREA
TOTAL: 18 m²/191 sq ft
GROUND FLOOR: 18 m²/191 sq ft
SIZE AND DIMENSIONS ARE APPROXIMATE, ACTUAL MAY VARY

GROUND FLOOR



Council Tax Band EPC Rating C



301 Michelin House 81 Fulham road
London
Greater London
SW3 6RD
07920 257649
fayeel@eson2.co.uk
www.eson2.co.uk