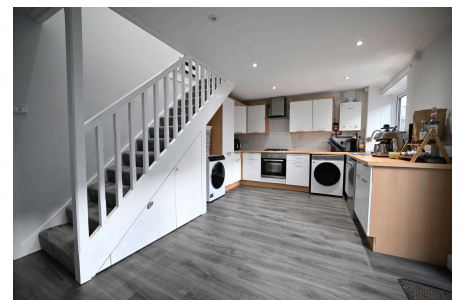


Sundridge Drive, Walderslade, Chatham, ME5 8JD

Guide Price £300,000 - £325,000

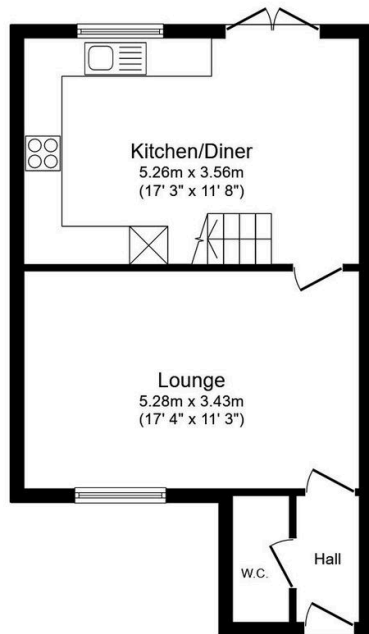
🛏 3 🚿 1 🚗 2



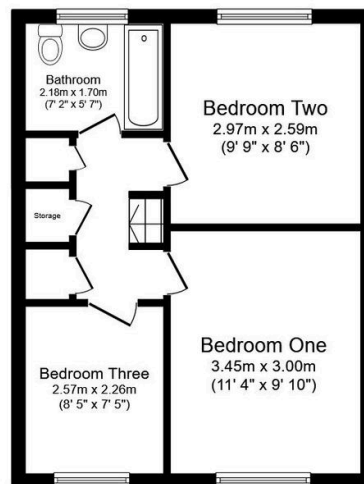
CALL TO BOOK YOUR VIEWING. Guide £300,000 - £325,000. If you are looking for your first home but perhaps you are struggling to tick all the boxes, then this home could be what you have been waiting for. Offering spacious bedrooms, downstairs living accommodation, storage and modern decoration throughout you can simply pick up your keys and move straight in. Call to book your viewing **QUOTE AP0490**

Key Features

- Three Bedroom Semi Detached Family Home
- Handy Downstairs Toilet
- Spacious Lounge
- Modern Fitted Family Bathroom
- Tenure Freehold/Council Tax Band C
- Driveway For At Least Two Cars
- Kitchen/ Breakfast Room
- Generous Workshop Ideal Extra Storage
- Easy Access To Motorway
- QUOTE REF AP0490



Ground Floor
Floor area 41.6 sq.m. (448 sq.ft.)



First Floor
Floor area 37.4 sq.m. (403 sq.ft.)

Total floor area: 79.1 sq.m. (851 sq.ft.)

This floor plan is for illustrative purposes only. It is not drawn to scale. Any measurements, floor areas (including any total floor area), openings and orientations are approximate. No details are guaranteed, they cannot be relied upon for any purpose and do not form any part of any agreement. No liability is taken for any error, omission or misstatement. A party must rely upon its own inspection(s). Powered by www.Propertybox.io