



**Duck Lane, Thornwood Common**

**Guide Price £675,000**



**MILLERS**  
ESTATE AGENTS

**\* CHARACTER COTTAGE \* EXTENDED ACCOMMODATION \* GARAGE EN-BLOC \* APPROX. 1,615.8 SQ FT VOLUME \* THREE RECEPTIONS \* GRADE II LISTED \* CLOAKROOM WC \***

We are excited to present this beautifully finished end-of-terrace cottage, which is full of character. This stunning property showcases a delightful array of original features & offers the perfect blend of traditional cottage charm & modern convenience. Notably, it includes a garage located to the side, providing ample space for a vehicle or additional storage.

The cottage is thoughtfully laid out, comprising three inviting reception rooms, each with a unique ambiance for relaxation & entertainment. The fitted kitchen breakfast room is designed for both functionality & style, featuring modern appliances & ample counter space. Additionally, there is a convenient study area that offers a quiet retreat for work or study. The cottage also boasts a beautifully presented family bathroom, finished with contemporary fixtures to create a stylish space for relaxation.

Externally, the property features a secluded rear garden that measures approximately 123 feet. This expansive garden includes a spacious lawn area, perfect for children to play or for family gatherings & is complemented by a stylish patio that invites outdoor dining & entertaining. Well-established shrubs, trees & bushes enhance the garden's charm & privacy, creating a tranquil retreat. A gravel area in front of the garage adds to the property's functionality, ensuring convenience & ease of access. This remarkable cottage truly embodies the essence of comfortable living in a stunning setting.

This small village is located within a mile from Epping Town which offers a busy High Street offering a variety of shops, restaurants, cafes, bars and supermarkets. Epping also benefits with a central line station serving London. Thornwood offers access to parts of Epping Forest and has close proximity to the M11 at Hastingwood & the A414 for Chelmsford.





## GROUND FLOOR

### Porch

4'4" x 4'5" (1.32m x 1.35m)

### Living Room

15'0" x 15'7" (4.58m x 4.75m)

### Study

7'10" x 9'9" (2.40m x 2.96m)

### Family Room

12'2" x 9'8" (3.71m x 2.95m)

### Cloakroom WC

4'1" x 3'1" (1.24m x 0.94m)

### Kitchen

14'1" x 11'10" (4.30m x 3.60m)

### Dining Room

12'8" x 11'6" (3.85m x 3.50m)

## FIRST FLOOR

### Landing

### Bedroom One

17'3" x 11'8" (5.25m x 3.56m)

### Bedroom Two

14'4" x 11'7" (4.37m x 3.54m)

### Bedroom Three

11'7" x 7'9" (3.53m x 2.36m)

### Bathroom

5'9" x 13'10" (1.75m x 4.22m)

## EXTERNAL AREA

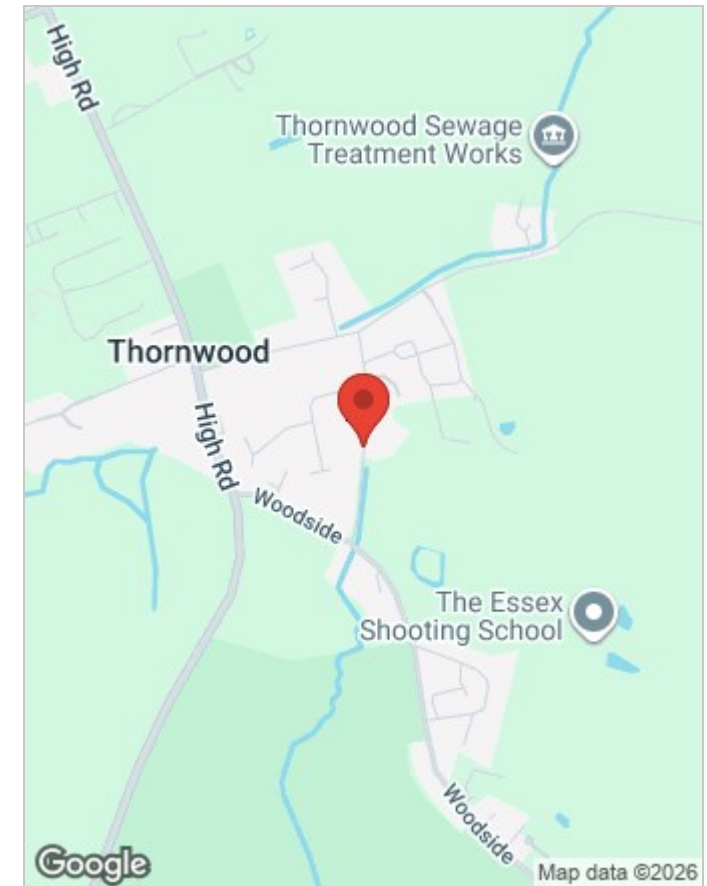
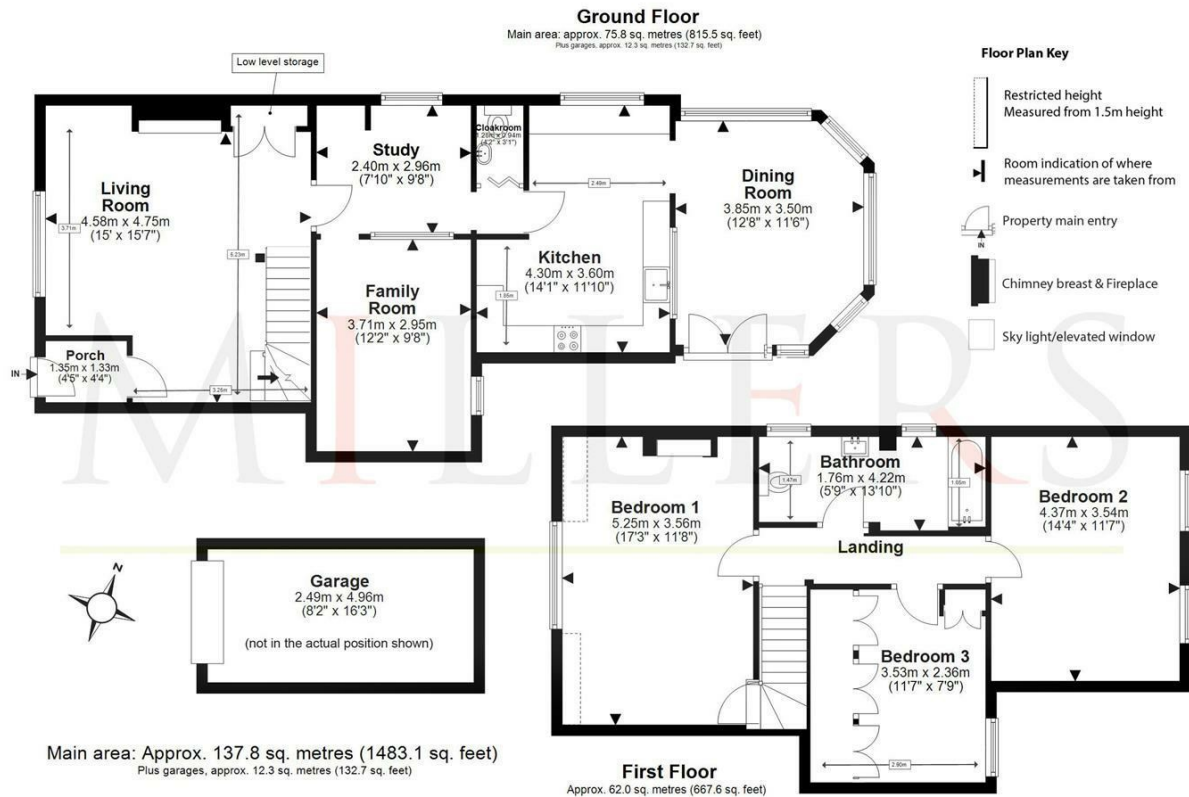
### Garage

16'3" x 8'2" (4.95m x 2.49m)

### Rear Garden (max)

123' x 43' (37.49m x 13.11m)





## Viewing

Please contact our Millers Office on 01992 560555 if you wish to arrange a viewing appointment for this property or require further information.

These particulars, whilst believed to be accurate are set out as a general outline only for guidance and do not constitute any part of an offer or contract. Intending purchasers should not rely on them as statements of representation of fact, but must satisfy themselves by inspection or otherwise as to their accuracy. No person in this firm's employment has the authority to make or give any representation or warranty in respect of the property.