



**68 Conway Drive, Telford Estate, Shrewsbury, SY2 5XA**

3 bedroom semi-detached house — £259,000 Freehold

# 68 Conway Drive, Telford Estate, Shrewsbury, SY2 5XA

Coopergreenpooks.co.uk

£259,000 Freehold — 3 bedroom semi-detached house

sales@cgpooks.co.uk

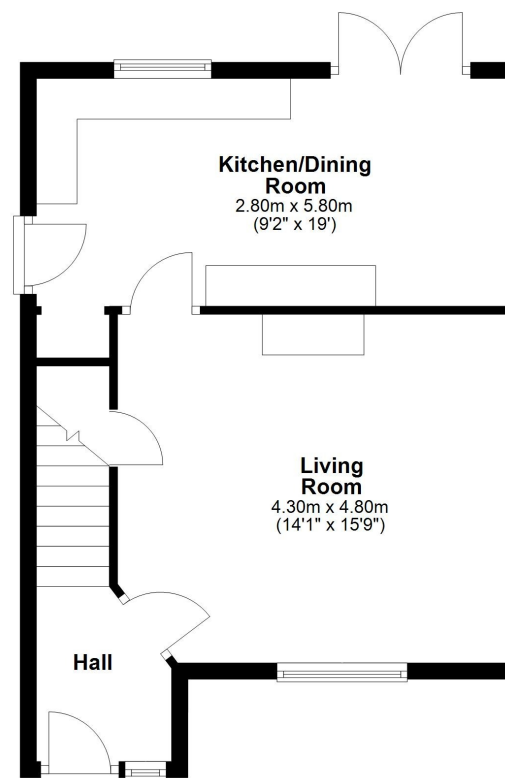
Situated within a popular residential area, this semi-detached family house offers well-proportioned and practical accommodation, while benefitting from a private south-west facing garden, and driveway parking.

## KEY FEATURES

- Entrance hall opening to a good-sized living room with feature fireplace and window to front
- Open plan kitchen/dining room, complete with a range of fitted units, glazed double doors to the garden, and access to side
- On the first floor are three bedrooms and a well-appointed family bathroom with shower. Two of the bedrooms also have built-in wardrobes
- uPVC double glazed windows and gas fired central heating
- Private south-west facing rear garden, laid to lawn with a paved sun terrace, useful garden store, and gated access to side
- Driveway to front providing parking for at least two cars, with an EV charging point, and adjoining lawned garden
- Located within a popular residential area, a short walk from a range of excellent amenities, primary and secondary schools, and less than two miles from the town centre
- The property was fully renovated approx. 12 years ago, including a full re-wire, new boiler and heating system, windows and doors, soffits and guttering, kitchen and bathroom, as well as flooring and ongoing decor and maintenance throughout
- Sold with no upward chain

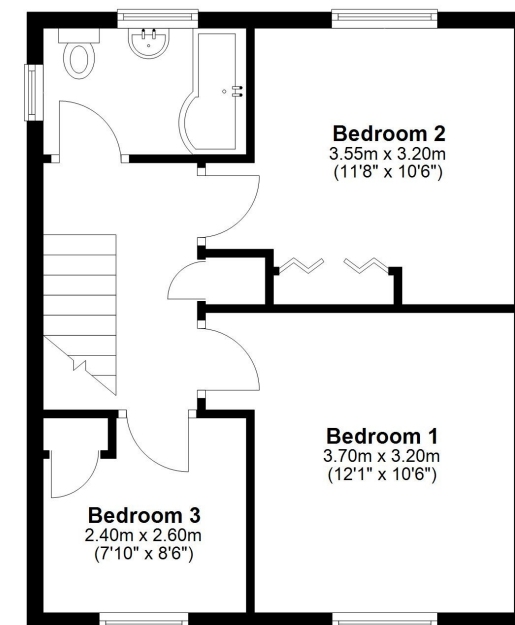
## Ground Floor

Approx. 43.7 sq. metres (470.8 sq. feet)



## First Floor

Approx. 41.7 sq. metres (449.1 sq. feet)



Total area: approx. 85.5 sq. metres (919.8 sq. feet)

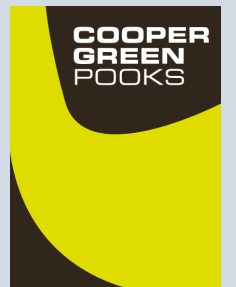






Cooper Green Pooks  
3 Barker Street  
Shrewsbury  
SY1 1QF

[www.cgpooks.co.uk](http://www.cgpooks.co.uk)  
[sales@cgpooks.co.uk](mailto:sales@cgpooks.co.uk)  
01743 276666



# 68 Conway Drive, Telford Estate, Shrewsbury, SY2 5XA

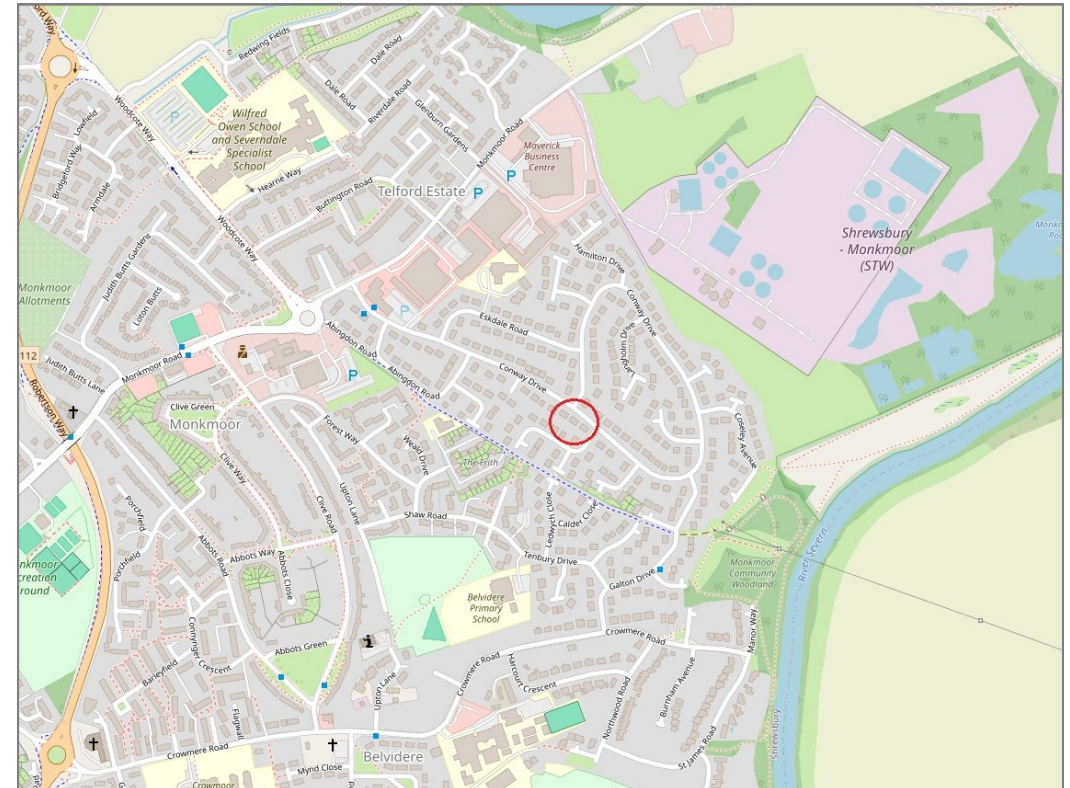
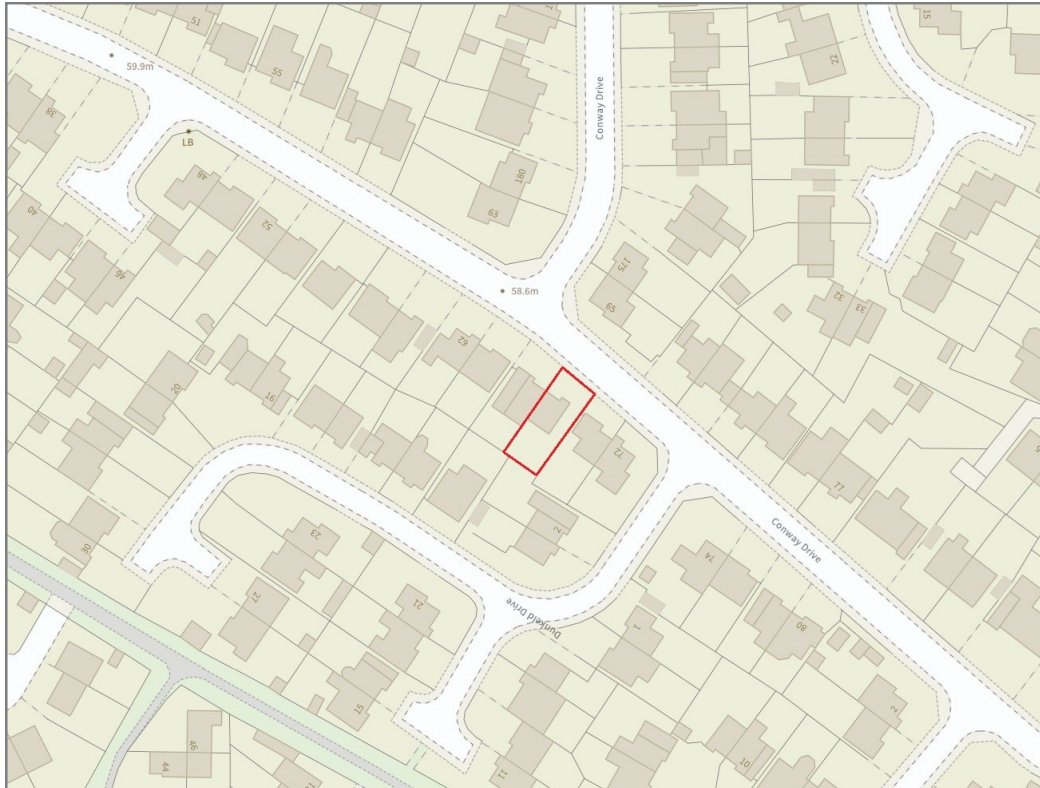
£259,000 Freehold — 3 bedroom semi-detached house

sales@cgpooks.co.uk

rightmove 

 OnTheMarket.com

 **RICS**  
Regulated by RICS



**BOUNDARIES NOT CONFIRMED**

Tenure	<b>Freehold</b>
Local Authority	<b>Shropshire Council</b>
Council Tax	<b>Band C</b>
EPC Band	<b>Band D</b>
Services	<b>All mains services are connected</b>

 **Expert mortgage advice available**

3 Barker St, Shrewsbury SY1 1QF

**Cooper Green Pooks**  
**01743 276666**



Your home may be repossessed if you do not keep up repayments on your mortgage.

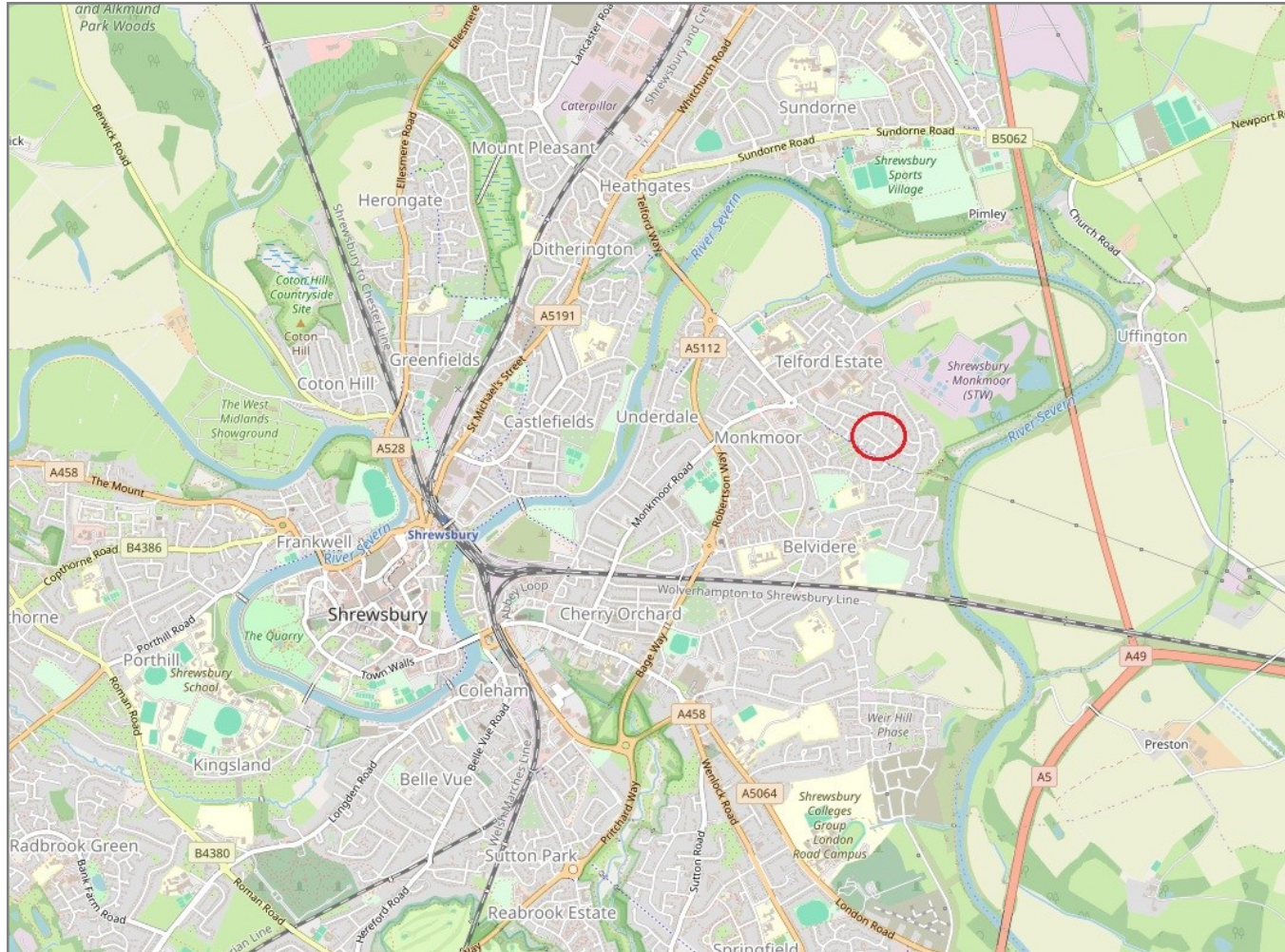
There may be a fee for mortgage advice. The actual amount you pay will depend upon your circumstances. The fee is up to 1% but a typical fee is 0.3% of the amount borrowed.

# 68 Conway Drive, Telford Estate, Shrewsbury, SY2 5XA

Coopergreenpooks.co.uk

£259,000 Freehold — 3 bedroom semi-detached house

sales@cgpooks.co.uk



**IMPORTANT NOTICE:** Cooper Green Pooks for themselves and for the lessors or vendors of this property whose agents they are give notice that: 1 No appliances, services or service installations have been tested and no warranty as to suitability or serviceability is implied. Any prospective purchaser or lessee is advised to obtain verification from their surveyor or solicitor. 2. The particulars are set out as a general outline only for the guidance of the intended purchasers or lessees and do not constitute, nor constitute part of, an offer or contract. 3. All descriptions, reference to condition and necessary permissions for use and occupation and other details are given in good faith and are believed to be correct but any intending purchasers or lessees should not rely on them as statements or representation of fact but satisfy themselves by inspection or otherwise as to the correctness of each of them. 4. No person in the employment of Cooper Green Pooks has any authority to make or give any representation or warranty whatsoever in relation to this property. 5. All rentals and prices are quoted exclusive of Stamp Duty, legal and surveyors fees and any other associated purchasers or lessees costs. 6. Floor plans are indicative only and should not be relied on. 7. The plan showing the boundary of the property is indicative only and has not been checked against the legal title so should not be relied on. 8. All dimensions, floor areas and site areas are only approximate and should not be relied on. Dimensions are generally maximum room dimension.