

61A Bettsworth Road, Ryde, PO33 3EN

Asking Price £279,995

EPC Rating: Council Tax Band:

ELLIOTT  
LINCOLN

ESTATE AGENTS & ASSOCIATES

Reassuringly familiar, refreshingly new

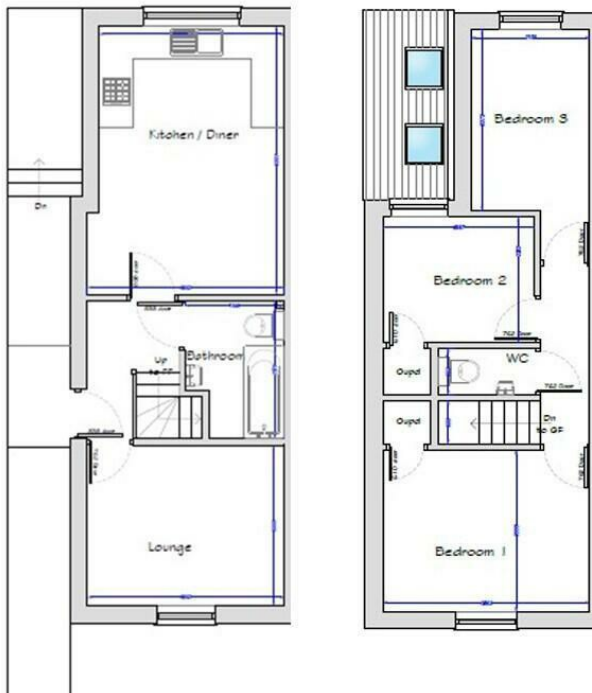
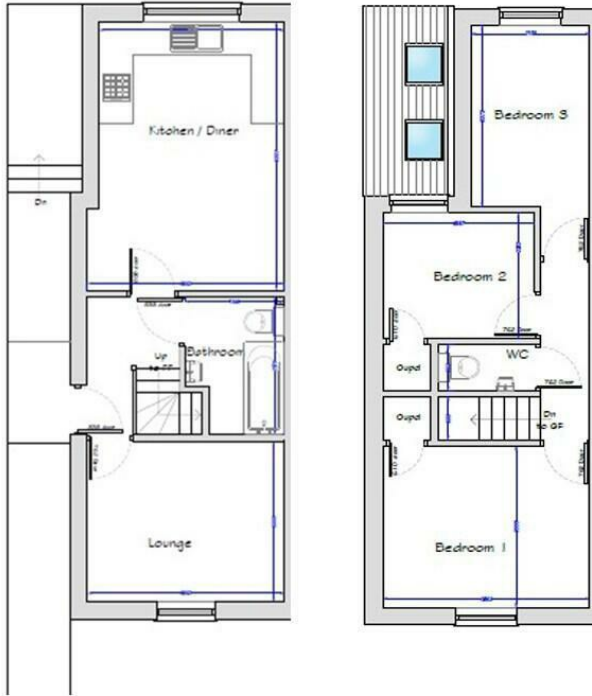


Brand-new Passive, EPC A-rated three-bedroom, 1.5 bathroom semi-detached home in Ryde, enjoying a private garden and attractive rural views.

**ELLIOTT  
LINCOLN**  
ESTATE AGENTS & ASSOCIATES

*Reassuringly familiar, refreshingly new*

Call or WhatsApp: 01983 642622  
office@elliottlincoln.co.uk  
www.propertysoftwaregroup.com



Energy Efficiency Rating		Current	Potential
Very energy efficient - lower running costs			
(92 plus)	<b>A</b>		
(81-91)	<b>B</b>		
(69-80)	<b>C</b>		
(55-68)	<b>D</b>		
(39-54)	<b>E</b>		
(21-38)	<b>F</b>		
(1-20)	<b>G</b>		
Not energy efficient - higher running costs			
<b>England &amp; Wales</b>		EU Directive 2002/91/EC	