



15 Luthers Close

Kelvedon Hatch, Brentwood

This beautifully presented three bedroom family home, situated in Kelvedon Hatch, offers contemporary accommodation throughout as well as a drivewa...

Council Tax band: TBD

EPC Energy Efficiency Rating: D

EPC Environmental Impact Rating: D





15 Luthers Close

Kelvedon Hatch, Brentwood

This beautifully presented three bedroom family home, situated in Kelvedon Hatch, offers contemporary accommodation throughout as well as a driveway with parking for two cars and a single garage.

To the ground floor is a modern kitchen with integrated appliances leading seamlessly through to the open plan lounge/dining room with double doors out to the rear garden and a door leading to the conservatory. The conservatory also gives access to the utility room and garage which is double length. A W/C completes the ground floor accommodation.

Upstairs, the home features three bedrooms. The principal bedroom benefits from air conditioning and includes a wall of fitted wardrobes, bedroom two also has air conditioning and along with bedroom three they both overlook the rear garden. The family bathroom is fully tiled and fitted with a modern white suite including a shower-over-bath. To the second floor there could be a further bedroom or office space with eaves storage and a velux window overlooking the garden. Outside, the garden has been thoughtfully planted with an array of colour, offering a tranquil space to enjoy all year round.

With its clean finish, built-in storage, and practical layout, this is a turn-key home that's ready to move into. Ideally located close to local shops, schools and transport links, it's a great choice for families, professionals or first-time buyers alike.

Offered for sale with a complete onward chain, viewing is highly recommended.





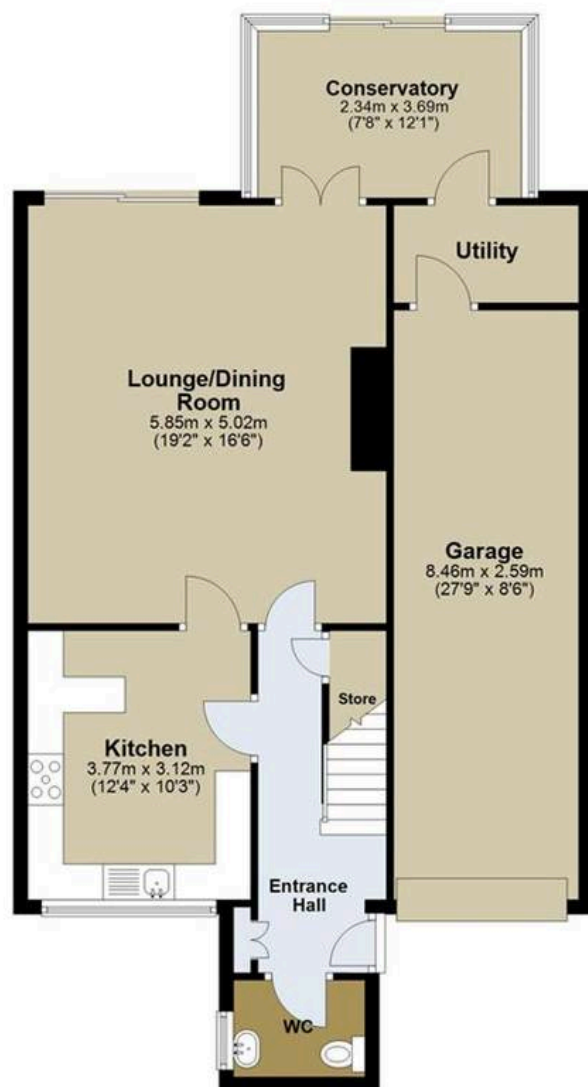






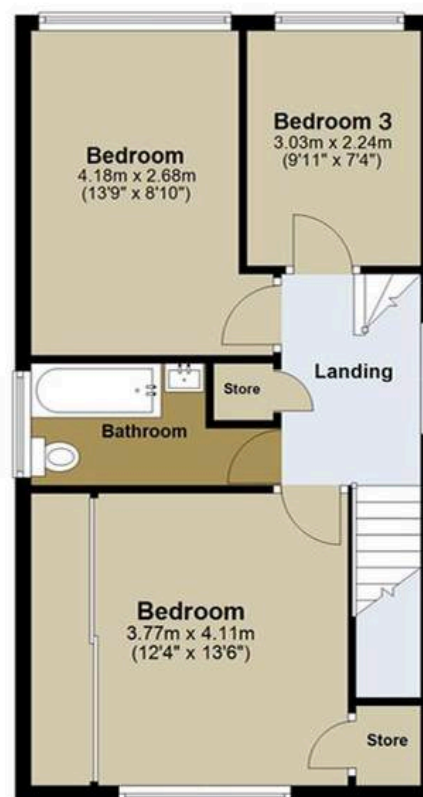
Ground Floor

Approx. 88.0 sq. metres (947.7 sq. feet)



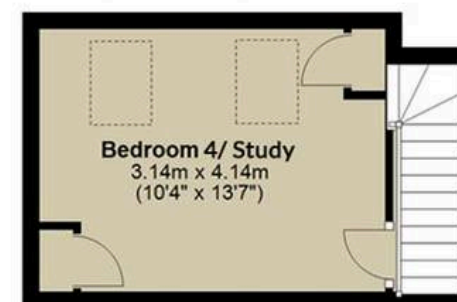
First Floor

Approx. 48.9 sq. metres (526.7 sq. feet)



Second Floor

Approx. 15.4 sq. metres (165.8 sq. feet)



About Us

Walkers | People & Property is built on a lifelong family passion for homes. Martin, Gillian and Adam Walker lead a respected, professional team who live and breathe all aspects of property. With over 30 years of experience, we understand the moving process on a personal level and are committed to delivering exceptional results. Most of all, helping people move is our hobby, and handing over the keys to excited buyers remains our favourite moment.

Get In Touch



Browse Properties



Contact Us
01277 355005



Our Website
www.walkersstates.co.uk



Our Address
90 High Street
Ingatstone
CM14 9DW



www.walkersstates.co.uk

Walkers
People & Property

Psst... Have you heard of
Walkers discreet marketing?

Many people lose out on their dream home to someone in a better position. Often, it is because they have delayed putting their house on the market, preferring to find somewhere first and then sell.

That is why we have innovated a totally unique and highly confidential moving home solution to put you in a competitive position.

Let us find you a buyer **without any advertising or pressure** and without the neighbours knowing.

Your secret is safe with us....

Get in touch for a
complimentary valuation.

Looking To Sell Or Let Your Home?

Book your free valuation to see how much your home is worth.