



**Kings Drive, KT7**

**£1,595,000**

**Dexters**



## Kings Drive, KT7

An immaculate family home of over 2,300 sq ft, beautifully renovated throughout to a high specification to create bright, stylish and versatile living. At the heart of the home is an immense open-plan kitchen/dining room with a wealth of natural light and featuring a large island, stylish kitchen, ample dining space and sliding doors opening directly onto the large landscaped rear garden.

To the front of the property, a welcoming large reception room, leading into the open-plan kitchen/dining room. Further ground floor accommodation includes a handy utility space, a guest loo and a wine cellar.

The first floor is composed of three well appointed double bedrooms, including the principal suite with impressively high ceilings, a walk-in wardrobe and an en-suite. There is also a versatile office space for home working or studying and an additional family bathroom suite. On the second floor, there is a further bedroom with en-suite.

Outside the garden has been lovingly landscaped to create a seamless flow from inside to outside living. The garden comprises green space and patios for outdoor dining and entertaining. To the front of the property there is off-street parking.

Ideally situated near the popular Thames Ditton village with excellent local schools and with the River Thames on the doorstep. Thames Ditton is just 0.8

### Features

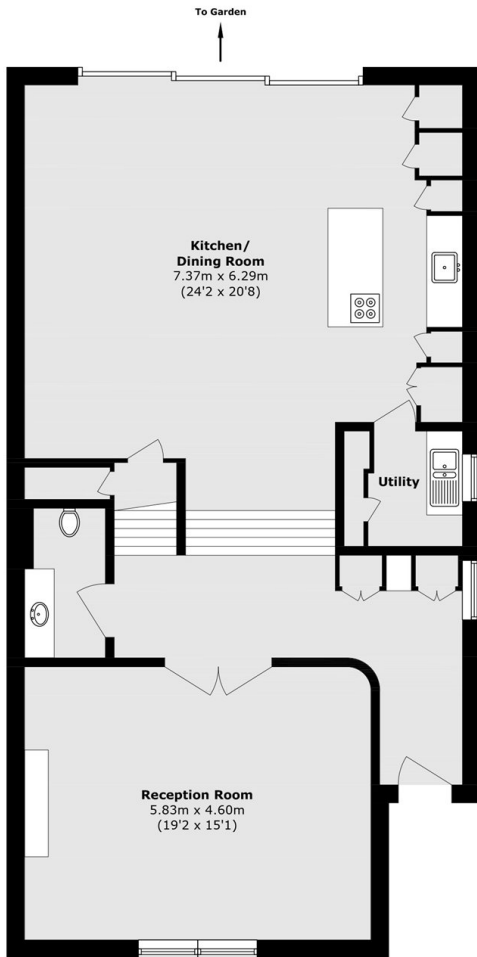
- Immaculate Family Home
- Four Double Bedrooms
- Three Bathrooms
- Open-Plan Living
- Landscaped Garden
- Riverside Location



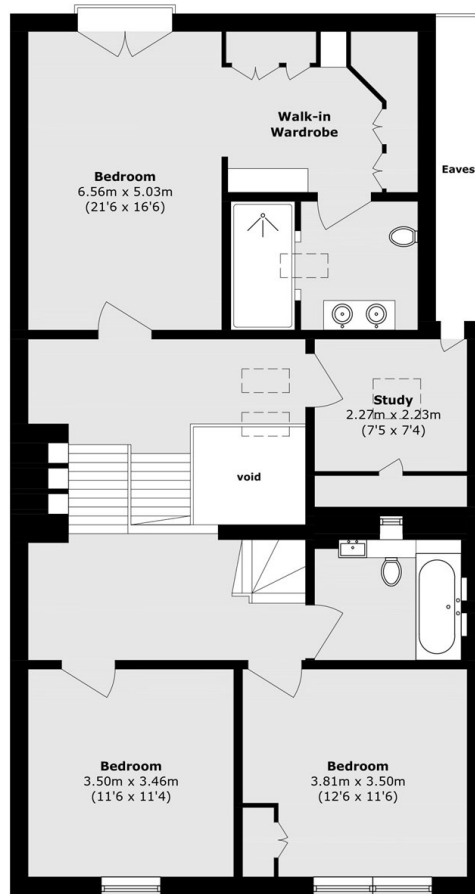




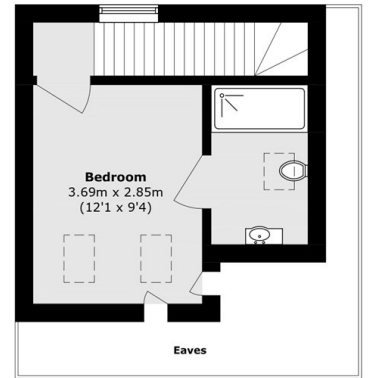
# Kings Drive, Thames Ditton, KT7



**Ground Floor**



**First Floor**



**Second Floor**

Total area (approx.): 219.9 sq. m (2367.0 sq. ft)  
(Excluding Eaves & Void)