



Sydenham Hill, SE26 | Offers In Excess Of £550,000

02087028111

dulwichvillage@pedderproperty.com

pedder
We live local



In General

- A stunning first floor purpose built apartment
- Particularly spacious - 972 sq ft
- Two double bedrooms
- Two bathrooms (one en-suite)
- 24' x 15' lounge/dining room open-plan to;
- Modern integrated kitchen
- Front balcony
- Secure underground parking, communal gardens
- Beautifully presented throughout

In Detail

A charming two double bedroom apartment located in the desirable area of Sydenham Hill.

Built in 2007 as part of a purpose-built development, the property is beautifully presented throughout.

With a gross internal area of 972 sq ft this impressive first floor apartment offers particularly spacious accommodation comprising two double bedrooms, two bathrooms (one en-suite), 24' x 15' lounge/dining room open-plan to a modern, integrated kitchen. From the lounge double doors give access to a front balcony. The property has communal gardens and there is a designated parking space in the underground garage. There is also a lift within the development.

The property is well located for access to nearby Crystal Palace with numerous bars, restaurants and shopping facilities. Dulwich Village is also easily accessible with its boutiques and variety of independent cafes and restaurants. The popular Dulwich Woods and Crystal Palace Park are within just a short walk. Nearby Crystal Palace and Sydenham Hill train stations have frequent services into central London.

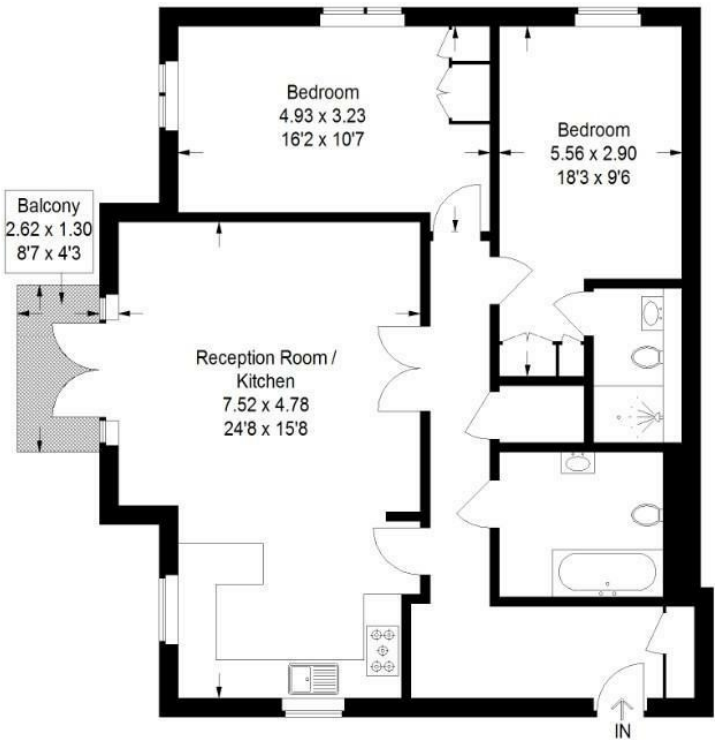
EPC: C | Council Tax Band: D | Lease: 106 years remaining | SC: £3,600 | GR: £300 pa | BI: Included in SC



Floorplan

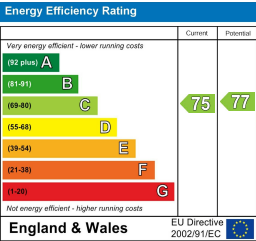
Blyton House, SE26

Approximate Gross Internal Area
90.3 sq m / 972 sq ft



First Floor

Copyright www.pedderproperty.com © 2026
These plans are for representation purposes only as defined by RICS - Code of Measuring Practice. Not drawn to Scale. Windows and door openings are approximate. Please check all dimensions, shapes and compass bearings before making any decisions reliant upon them.



Pedder Property Ltd trading as Pedder for themselves and for the vendor/landlord of this property whose agents they are, give notice that (1) these particulars do not constitute any part of an offer or contract, (2) all statements contained within these particulars are made without responsibility on the part of Pedder or the vendor/landlord, (3) whilst made in good faith, none of the statements contained within these particulars are to be relied upon as a statement of representation or fact, (4) any intending purchaser/tenant must satisfy him/herself by inspection or otherwise as to the correctness of each of the statements contained within these particulars, (5) the vendor/landlord does not make or give either Pedder or any person in their employment any authority to make or give representation or warranty whatsoever in relation to this property.