



Manor Lane, SE12

£575,000

A stunning two-bedroom semi-detached house located within close proximity to both Manor House Gardens and Brindshe Manor School. This fantastic home is well suited to a young couple or small family looking to be close to outstanding primary schools and attractive green spaces.

The property features an open-plan layout, offering ample living and dining space, which leads into a modern fitted kitchen with direct access to a private courtyard garden. Additional features include two high-specification modern bathrooms, one on the ground floor and the other on the upper floor, as well as two generously sized bedrooms.

Features

- Suburb Location
- Open-Plan Living Arrangement
- Two Family Bathrooms
- Excellent Decor Throughout
- Close To Lee And Hither Green Station
- Close Proximity To Brindshe Manor School



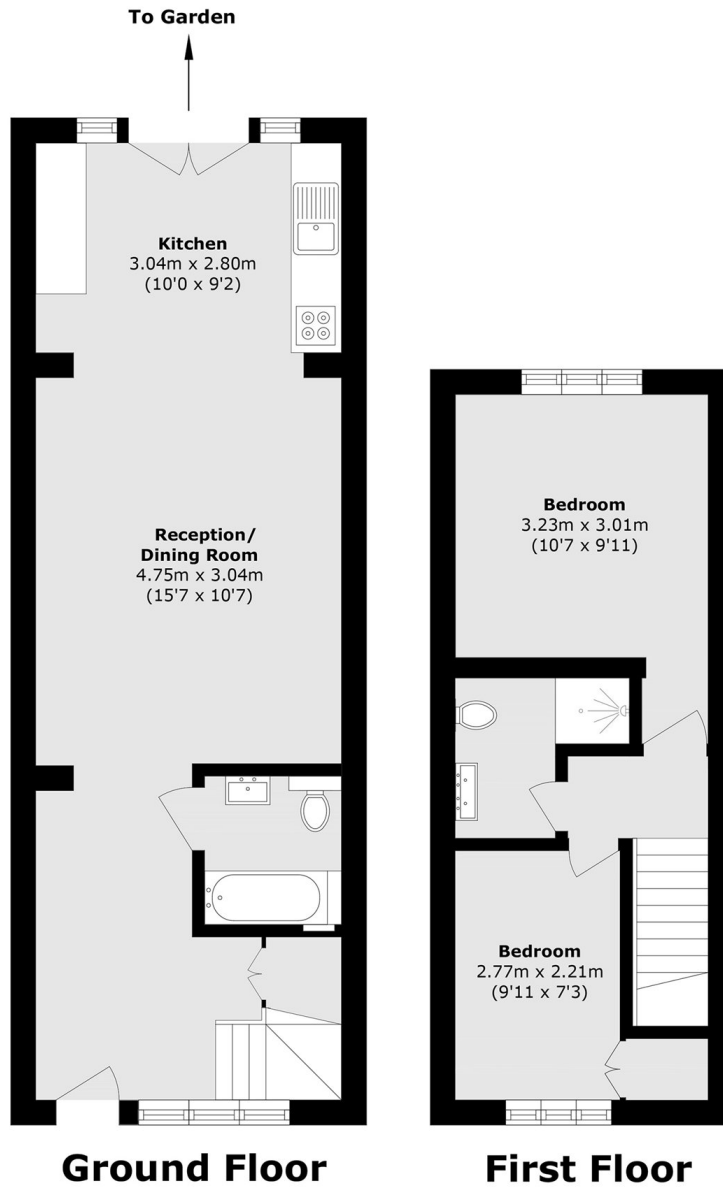
Manor Lane, SE12

Manor Lane is located just off Burnt Ash Road, which provides a wide range of amenities, including numerous cafés, coffee shops and restaurants. The property is also within easy reach of both Lee and Hither Green stations, with London Bridge being just

10 minutes via Southeastern Rail from Hither Green Station. Manor House Gardens is within walking distance and offers open green spaces, along with its own café.



Manor Lane, London, SE12



Total area (approx.): 60.0 sq. m (645.8 sq. ft)