



Montpelier Avenue, W5

£395,000

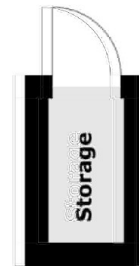
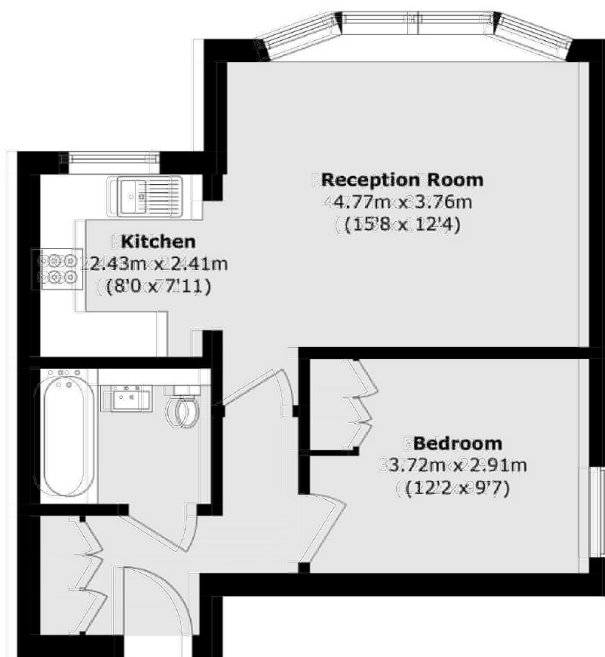
This one bedroom first floor apartment is offered to the market with no onward chain. Presented in modern condition throughout there is a large double bedroom, modern bathroom, contemporary kitchen and large open-plan kitchen/living room with bay window. Located on the first floor with a share of the freehold and communal garden.

Approximately 0.7 miles from Ealing Broadway Station with Elizabeth, Central, District and main line tubes and trains. Excellent local schools and easy access to the high street of Pitshanger Lane.

Features

- One Bedroom
- First Floor
- Period Conversion
- Prime Residential Location
- Share Of Freehold
- No Onward Chain

Montpelier Avenue, London, W5



**Not In Actual
Location/Orientation**

Total area (approx.): 46.8 sq. m (503.7 sq. ft)
External Storage (approx.): 1.9 sq. m (20.4 sq. ft)

Dexters

Ealing
2 New Ealing Broadway
London
W5 2NU
Sales
020 8810 0909

Energy Rating: C. We aim to make our particulars both accurate and reliable. However they are not guaranteed; nor do they form part of an offer or contract. If you require clarification on any points then please contact us, especially if you're traveling some distance to view. Please note that appliances and heating systems have not been tested and therefore no warranties can be given as to their good working order.

 **RICS** | Regulated
Estate Agent
and Letting Agent

[dexters.co.uk](https://www.dexters.co.uk)