



**Guide Price**  
**£170,000**

**Freehold**

2x  1x  1x 

**Longfield Road, Dover,**  
**Kent, CT17**

**OVER 60?**

Secure this property  
for up to **59% less!**

*Wards*  
Helping you move forwards





## Main features

- Chain free property in a fantastic location
- Perfect blank canvass for first time buyer or buy to let investment
- Low maintenance rear garden
- Close proximity to Dover Priory railway station
- Property could benefit from cosmetic works

## Accommodation

### SPLIT LEVEL GROUND FLOOR

Entrance Lobby

Lounge : 18'4 x 12'8 (5.59m x 3.86m)

Dining Area : 15'2 x 11'2 (4.63m x 3.41m)

Kitchen : 11'5 x 7'11 (3.48m x 2.41m)

### SPLIT LEVEL FIRST FLOOR

Landing

Family Bathroom

Bedroom 1 : 15'3 x 10'7 (4.65m x 3.23m)

Bedroom 2 : 11'1 x 10'2 (3.38m x 3.10m)

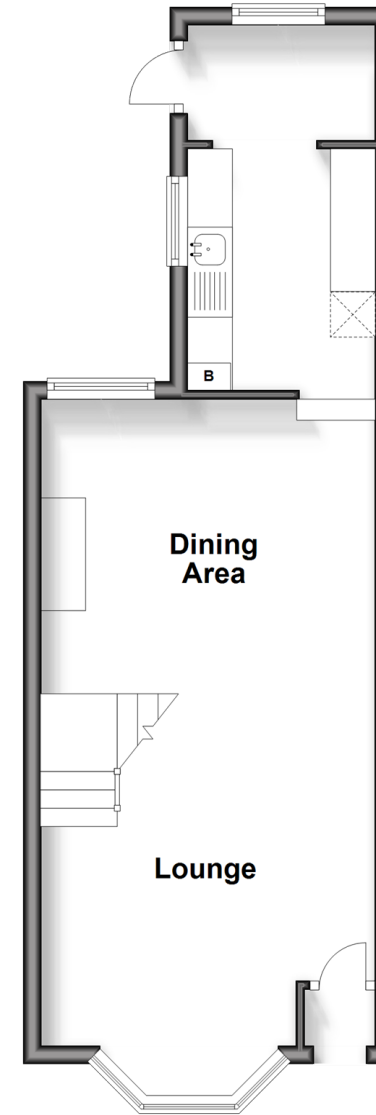
### OUTSIDE

Front Garden

Rear Garden

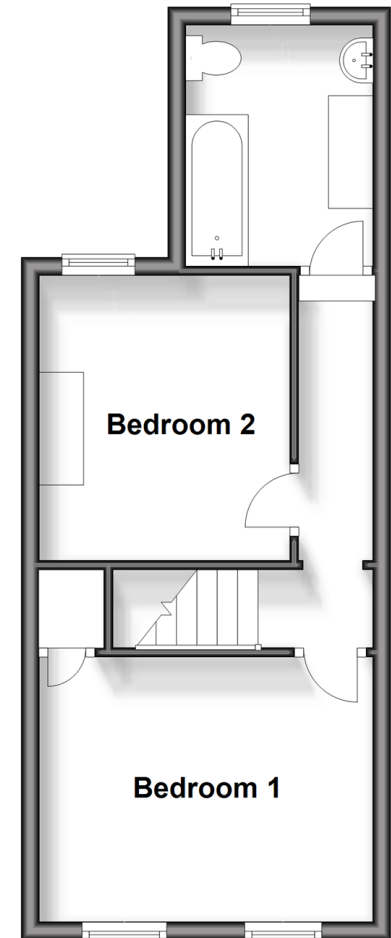
## Split Level Ground Floor

Approx. 35.2 sq. metres (378.5 sq. feet)



## Split Level First Floor

Approx. 32.7 sq. metres (351.5 sq. feet)



**Call Dover - 01304 214876 ■ [wardsofkent.co.uk](http://wardsofkent.co.uk)**

- Legal advice should be taken to verify fixtures/fittings, planning, alterations and/or lease details
- Appliances & services are untested, dimensions are approximate and floor plans are not to scale
- Through a Homewise Home For Life Plan people aged 60+ can secure this property for up to 59% less, by purchasing a Lifetime Lease.



10735735/20250423/SB/GM