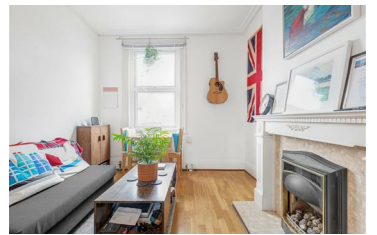
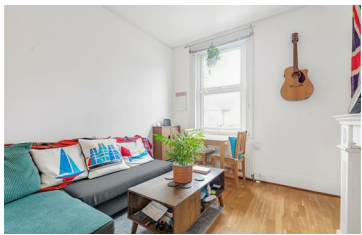




**JAMES
ANDERSON**



TO LET



Upper Richmond Road West, East Sheen, SW14

£1,700 Per Month

Per Month

Smart two bedroom first floor flat situated moments from all of East Sheen's shops, cafes and restaurants. There are two good sized bedrooms, a spacious and bright living room, shower room and fully fitted kitchen. Further benefits include wooden floors and double glazed windows. Richmond Park is nearby while Mortlake station is a short walk away. This property is offered on an unfurnished basis.

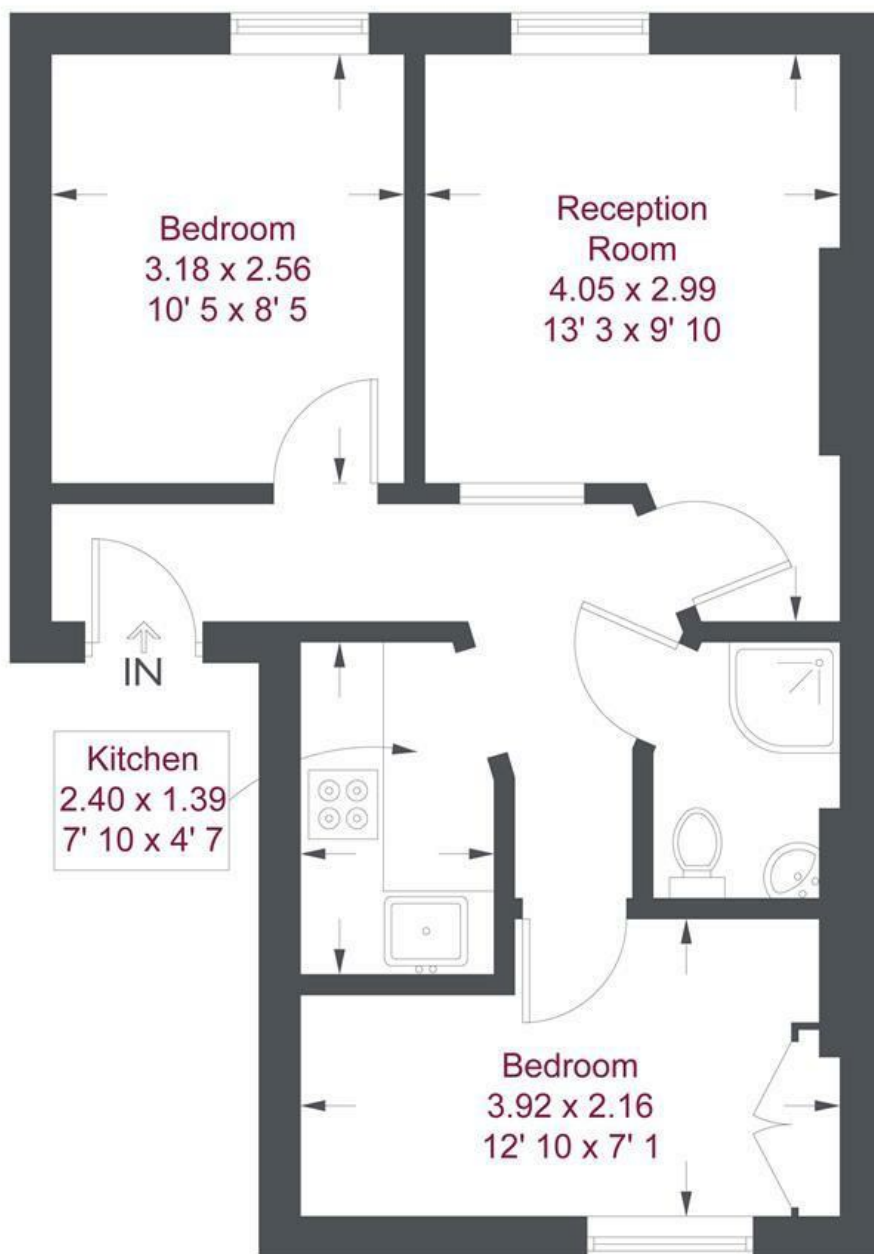
-  Two Bedrooms
-  Shower Room
-  Unfurnished
-  Galley Kitchen
-  EPC C | Council Tax Band B

-  Mortlake Station
-  East Sheen Primary School
-  Close to Richmond Park
-  Central Location
-  Deposit £1961.53 | Holding Deposit £392.30



OPEN 7 DAYS A WEEK • Weekdays until 9pm • Weekends until 5pm

0208 876 6611



First Floor

Upper Richmond Road West

Approximate Gross Internal Area = 434 sq ft / 40.3 sq m

This plan is not to scale and must be used as layout guidance only. All measurements and areas are approximate and should not be relied upon to provide accurate information. This plan must not be relied upon when making property valuations, design considerations or any other such relevant decisions. We accept no responsibility or liability (whether in contract, tort or otherwise) in relation to any loss whatsoever arising from or in connection with any use of this plan or the adequacy, accuracy or completeness of it or any information within it.

Energy Efficiency Rating		Current	Potential
Very energy efficient - lower running costs			
(92 plus) A			
(81-91) B			
(69-80) C			
(55-68) D			
(39-54) E			
(21-38) F			
(1-20) G			
Not energy efficient - higher running costs			
England & Wales		EU Directive 2002/91/EC	

Environmental Impact (CO ₂) Rating		Current	Potential
Very environmentally friendly - lower CO ₂ emissions			
(92 plus) A			
(81-91) B			
(69-80) C			
(55-68) D			
(39-54) E			
(21-38) F			
(1-20) G			
Not environmentally friendly - higher CO ₂ emissions			
England & Wales		EU Directive 2002/91/EC	

