



LOWER MORTLAKE ROAD RICHMOND TW9
£4,000 PER MONTH AVAILABLE 15/05/2026

Hamptons
THE HOME EXPERTS

{ THE PARTICULARS

Lower Mortlake Road Richmond
TW9

£4,000 Per Month
Furnished

-  3 Bedrooms
-  2 Bathrooms
-  2 Receptions

Features

- Three bedrooms, - Two bathrooms, -
Kitchen, - Two reception rooms, - Private
garden, - Council Tax Band E

Council Tax

Council Tax Band E

Hamptons
8 The Quadrant
Richmond, TW9 1BP
020 8940 1199
RichmondLettings@hamptons-int.com
www.hamptons.co.uk

The Property

A well presented three bedroom terraced house to rent in Richmond. The property offers a well balanced layout with three bedrooms and two bathrooms, presented in good condition throughout. To the rear, there is a pretty private garden. The property is conveniently located approximately 0.3 miles from Richmond Station, offering direct links via mainline rail, Underground and Overground services. Richmond town centre is also just moments away, providing a wide range of shops, restaurants and amenities, along with access to the open spaces of Richmond Green and the River Thames.



LOWER MORTLAKE ROAD

Approximate Gross Internal Area

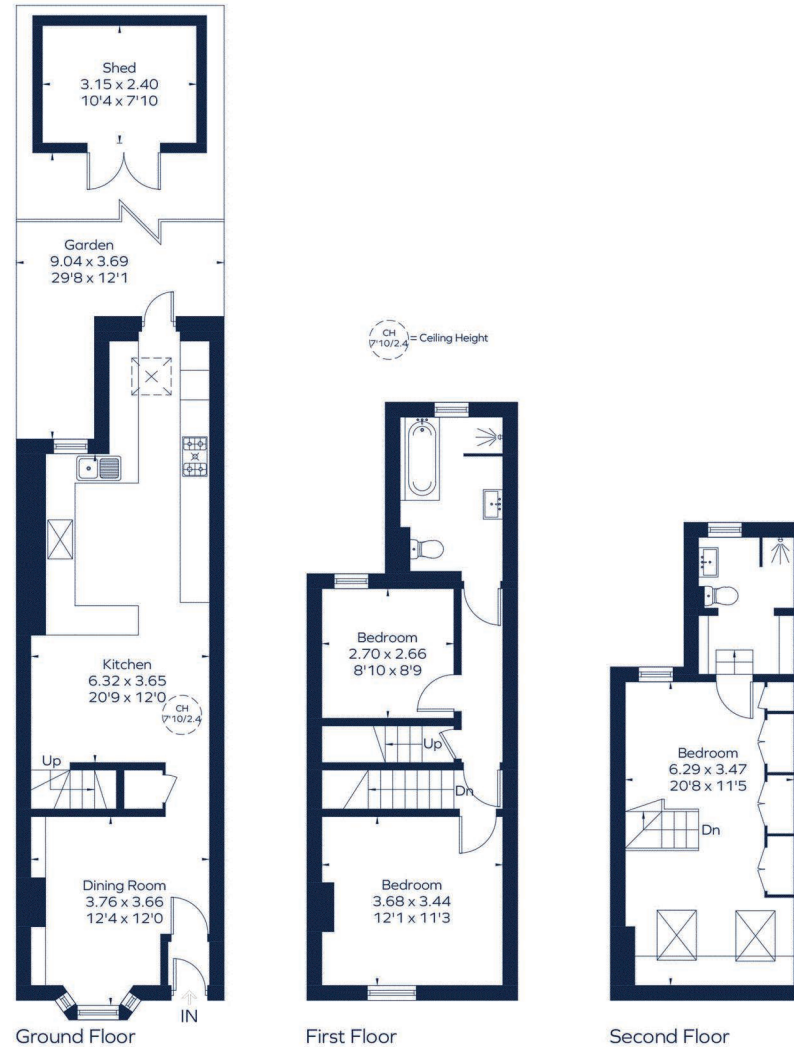
Ground floor = 484 sq. ft. (45.0 sq. m.)

First floor = 401 sq. ft. (37.3 sq. m.)

Second floor = 291 sq. ft. (27.1 sq. m.)

Shed = 81 sq. ft. (7.5 sq. m.)

Total = 1257 sq. ft. (116.9 sq. m.)



This plan is for layout guidance only. Not drawn to scale unless stated. Windows and door openings are approximate. Whilst every care is taken in the preparation of this plan, please check all dimensions, shapes and compass bearings before making any decisions reliant upon them.
ID 1299851

For Clarification

We wish to inform prospective tenants that we have prepared these particulars as a general guide and they have been confirmed as accurate by the landlord. We have not verified permissions, nor carried out a survey, tested the services, appliances and specific fittings. Room sizes are approximate and measurement figures rounded: they are taken between internal wall surfaces and therefore include cupboards/shelves, etc. Accordingly, they should not be relied upon for

carpets and furnishings. It should also be noted that all fixtures and fittings, carpeted, curtains/blinds, kitchen equipment and garden statuary, whether fitted or not, are deemed removable by the landlord unless specifically itemised with these particulars. Please enquire in office or on our website for details on holding deposit and tenancy deposit figures.

