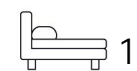


Living
made
better

Roma Corte
Lewisham, SE13 7GR



£1,800 PCM

Roma Corte, Lewisham, SE13 7GR

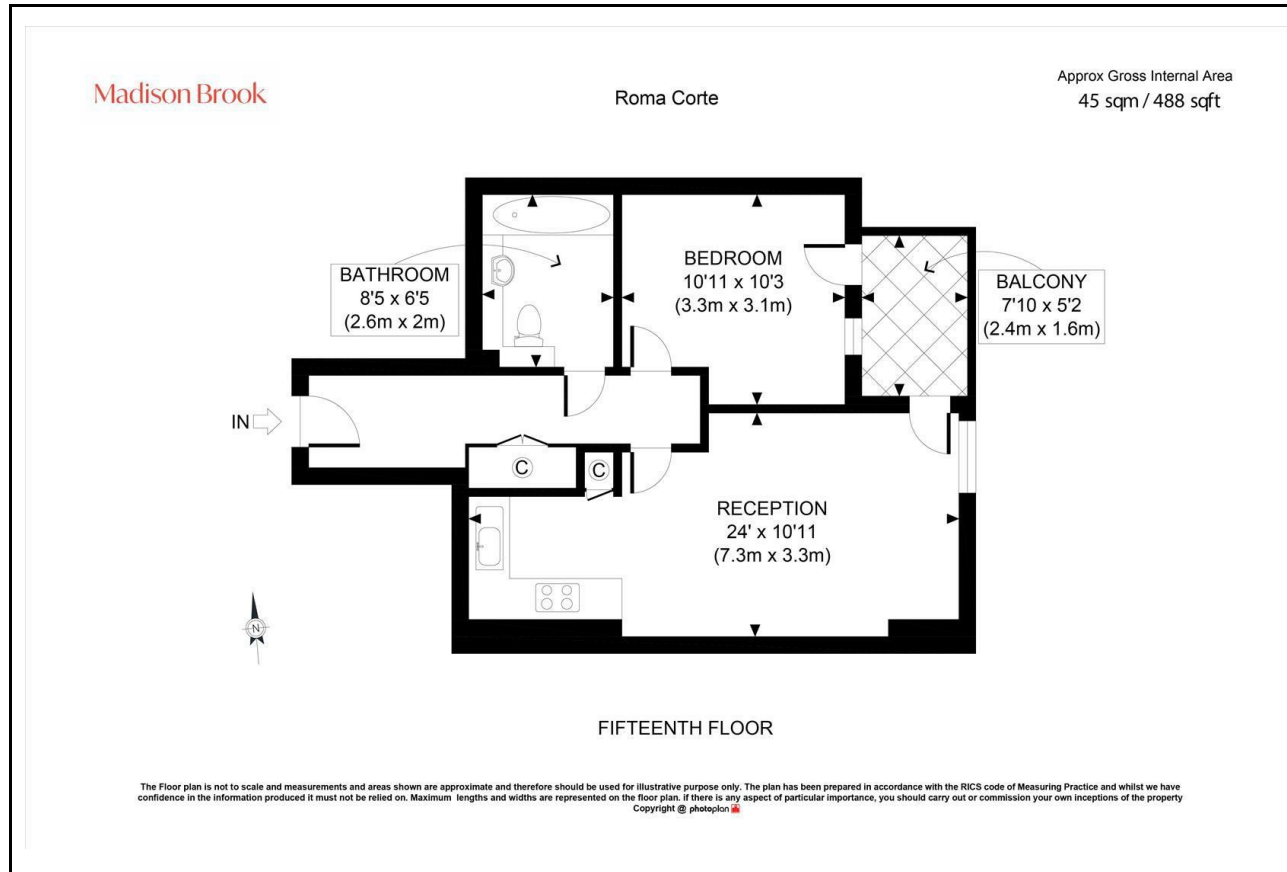
Madison Brook

Property Summary

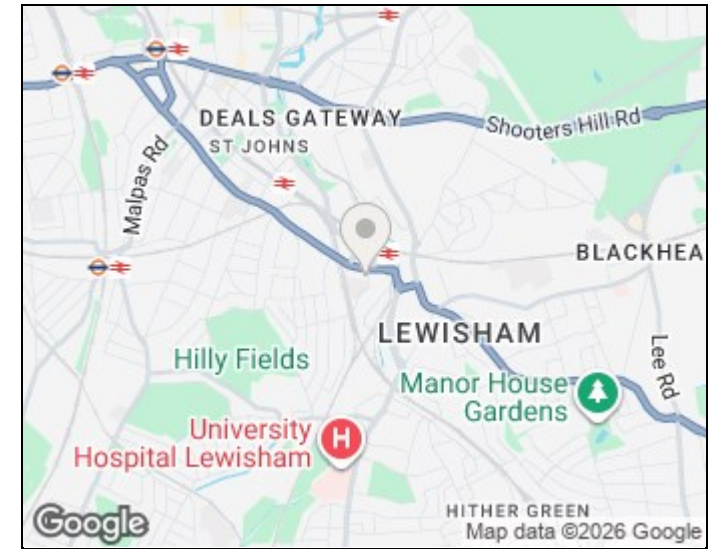
Set on the 15th floor of the popular Renaissance Development, this bright and modern one-bedroom apartment offers 488 sq. ft. of internal space and a private balcony with wide-reaching views. The property features an open-plan kitchen/reception with integrated appliances, a well-proportioned bedroom, and a stylish bathroom. Offered furnished, with 24-hour concierge and access to a communal roof terrace.

Located just a 3-minute walk to Lewisham DLR, rail, and bus stations, with journey times including 11 minutes to London Bridge and 16 to Canary Wharf. Local shops, supermarkets, and leisure facilities are all close by.

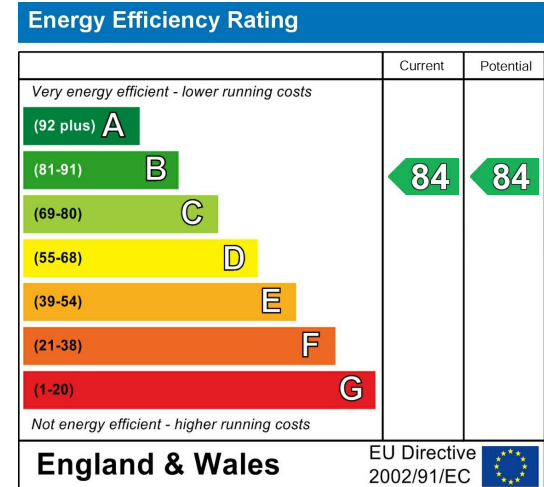
Floorplan



Area Map



Energy Efficiency Graph



These particulars, whilst believed to be accurate are set out as a general outline only for guidance and do not constitute any part of an offer or contract. Intending purchasers should not rely on them as statements of representation of fact, but must satisfy themselves by inspection or otherwise as to their accuracy. No person in this firm's employment has the authority to make or give any representation or warranty in respect of the property.

43 Loampit Vale, Lewisham, London, SE13 7FT

Tel: 020 3946 6200 Email:

lewisham@madisonbrook.com

<https://madisonbrook.com/>