



TK International  
020 7794 8700  
www.t-k.co.uk

Residential Sales  
Residential Lettings  
Property Management

Sales Office:  
9 Heath Street  
Hampstead  
London NW3 6TP  
E: sales@t-k.co.uk

Lettings Office:  
16-18 Heath Street  
Hampstead  
London NW3 6TE  
E: lettings@t-k.co.uk

tk.international  
TK International  
TK International

Est.  
1998



## Frognal Hampstead NW3

Spanning in excess of 1,100 sq ft is this superb upper maisonette, arranged over the second and third floors of an elegant and well maintained period conversion, enviably positioned on a sought after tree lined road on the lower slopes of Hampstead, ideally located between the Village and Finchley Road.

The apartment offers generous and well balanced living accommodation, including an impressive 18'2" x 12'2" reception room, a well appointed kitchen, separate dining room and study, together with a utility room and guest WC. Presented in excellent decorative order throughout, the property combines character and comfort with beautifully designed contemporary touches, most notably within the two stylish bedroom suites, both featuring bespoke fitted wardrobes and luxurious en suite facilities.

Further benefits include a wonderful west facing terrace enjoying far reaching treetop views towards West London.

Frognal is ideally situated for the excellent boutiques, cafés, restaurants and transport facilities of Hampstead Village, Finchley Road and the O2 Centre, with both Hampstead Underground Station (Northern Line) and Finchley Road Underground Station (Metropolitan and Jubilee Lines) conveniently nearby.

**£1,100,000**

**SOLE AGENT**

**Share of Freehold**









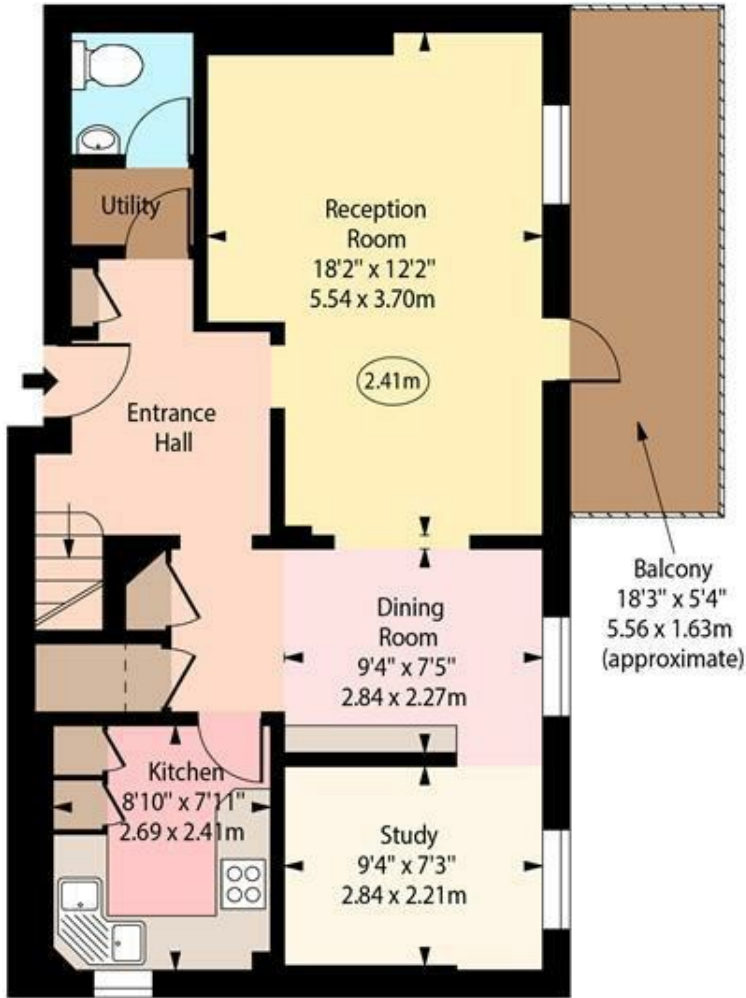




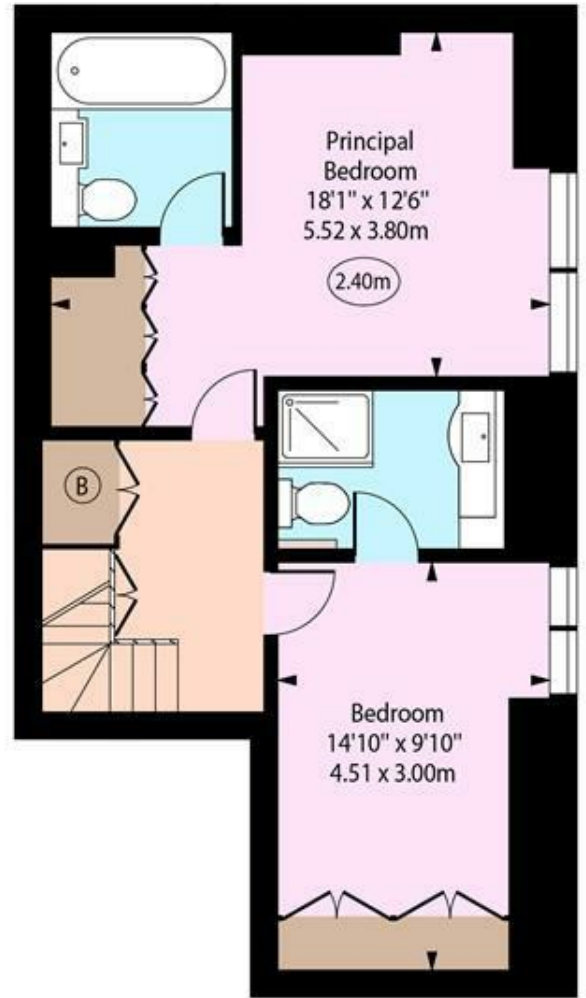
# Froggnal, NW3



○ - Ceiling Height



Second Floor



Third Floor

Approx Gross Internal Area 1110 Sq Ft - 103.12 Sq M

Every attempt has been made to ensure the accuracy of the floor plan shown. However, all measurements, fixtures, fittings, and data shown are approximate interpretations and for illustrative purposes only. Measured according to the RICS. Not To Scale.

[www.goldlens.co.uk](http://www.goldlens.co.uk)

Prepared for TK International

Ref. No. 031855D