



AKUA OTENG

exp

@ akua.oteng@exp.uk.com

akuaoteng.exp.uk.com

07852 280 188

Crawford Street, Marylebone, W1U

Offers Over £475,000

🛏 1 🚿 1 🚗 1



- Please Quote A01571 For All Enquiries
- Offers Over £475,000
- Third Floor position, South facing Aspect
- Prime Marylebone location (W1U)
- Long Lease
- This property is for sale by Modern Method of Auction
- Large One Bedroom Apartment Approximately 506sq ft / 47sq m
- Walking distance to Regent's Park
- Close to Baker Street and Marylebone station (5 lines)
- No Chain

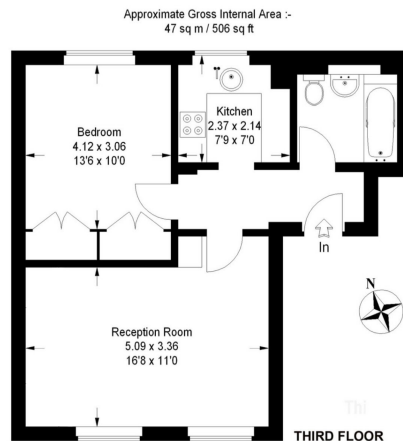


Please Quote A01571 For All Enquiries

This property is for sale by Modern Method of Auction through iamSold Ltd.

One-Bedroom Third Floor Apartment in the Heart of Marylebone, one of London's most coveted and prestigious postcodes. The apartment occupies a prime position on Crawford Street, a quiet, tree-lined residential thoroughfare that typifies the elegant character of Marylebone Village. An exceptional opportunity for Young Professional First-Time Buyers, discerning investors, or those seeking an ideal pied-à-terre in central London.

This property is for sale by Modern Method of Auction, allowing the buyer and seller to complete within a 56 Day Reservation Period. Interested parties' personal data will be shared with the Auctioneer (iam



Your property has the potential to be **C** with a score of **80**.

Score	Energy rating	Current	Potential
92+	A		
81-91	B		
69-80	C	78	80
55-68	D		
39-54	E		
21-38	F		
1-20	G		