



Call: 02394 217317
Whatsapp: 0793 283 1587
Email: sarah@soldby.uk
Social media: @soldbySarahOliver
Website: www.soldby.uk



Mouliere Court

St. Georges Road, Denmead, Waterlooville, P07 6FW

£230,000



Mouliere Court

St. Georges Road, Denmead, Waterlooville, PO7 6FW

£230,000



Welcome to Mouliere Court...

Located in the heart of the popular village of Denmead, this well presented two bedroom first floor maisonette offers spacious and versatile accommodation, ideal for first time buyers, downsizers, or investment purchasers alike. Situated along St Georges Road, the property enjoys a convenient position close to local shops, transport links and amenities while also benefiting from a peaceful residential setting.

The welcoming private entrance leads upstairs to a landing area, opening into a bright and spacious living room. This impressive reception space provides ample room for both lounge and dining furniture, creating an ideal setting for relaxing or entertaining guests. Large windows allow plenty of natural light to flood the room.

The fitted kitchen is conveniently positioned adjacent to the living area and offers a practical layout with a range of storage units, worktop space, and features appliances such as an oven with hob & extractor fan, fridge / freezer, dishwasher and washer/dryer. A useful larder cupboard further enhances the storage available within the property.

The property benefits from two well proportioned bedrooms. The principal bedroom is a comfortable double room and enjoys the added luxury of an ensuite shower room, providing privacy and convenience. The second bedroom is also a good size and would make an ideal guest room, child's bedroom, or home office depending on individual requirements.

A modern family bathroom serves the remainder of the accommodation and is fitted with a bath, wash basin, and WC. There us a useful storage cupboard, which also houses an air purification system.

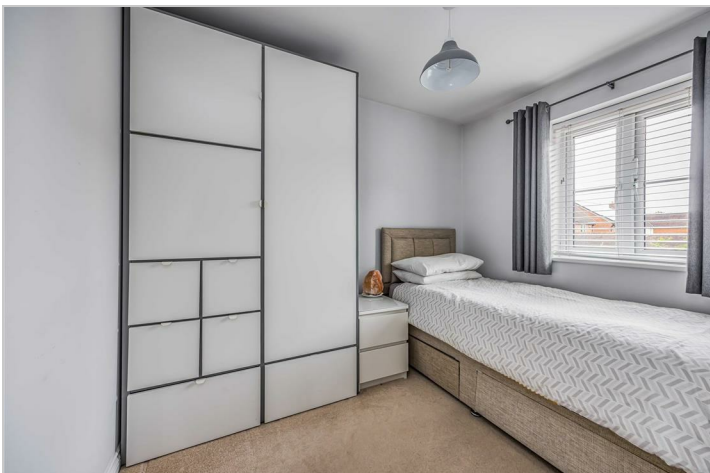
Externally, one of the standout features of this property is the substantial garage measuring over 21ft in length, offering excellent storage, workshop potential, or secure parking. Mouliere Court also benefits from a communal bike storage unit.

Denmead remains a highly desirable village location, offering a strong sense of community alongside excellent day-to-day amenities, pubs, cafés, and countryside walks nearby. Easy access to Waterlooville, Portsmouth, and major road networks makes this an excellent choice for commuters.

Viewings are highly recommended to fully appreciate the space, practicality, and excellent location this charming property has to offer. Please contact the office to arrange your appointment.

Ground Rent - £200 PA
Service Charge - £948.20 PA
113 years remaining on lease

- WELL PRESENTED
- TWO BEDROOMS
- EN-SUITE TO MASTER
- GARAGE
- MOVE IN READY
- SOUGHT AFTER LOCATION
- FITTED KITCHEN
- STORAGE CUPBOARDS



Road Map



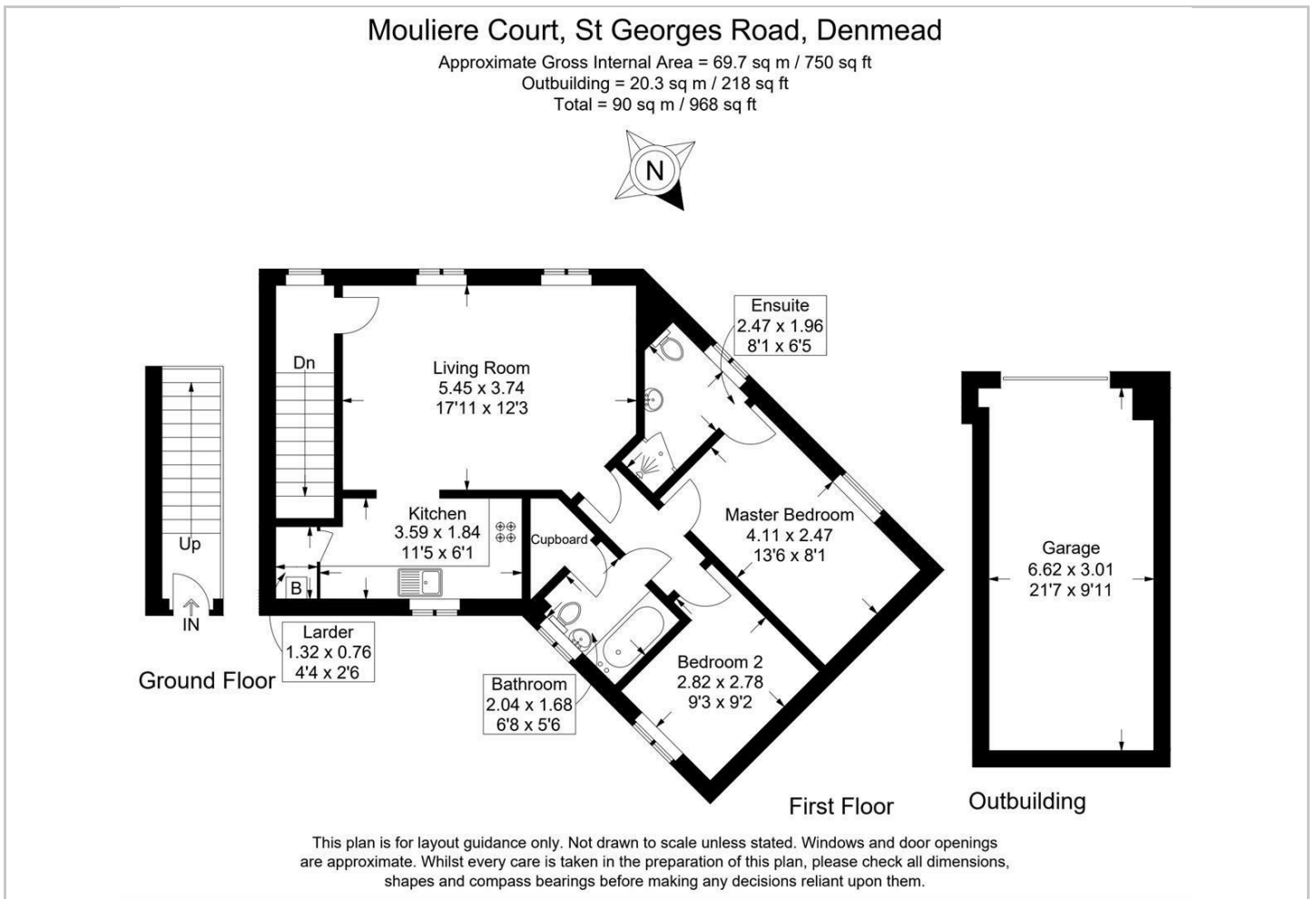
Hybrid Map



Terrain Map



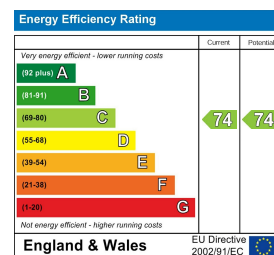
Floor Plan



Viewing

Please contact our Central Office on 02394 217317 if you wish to arrange a viewing appointment for this property or require further information.

Energy Efficiency Graph



These particulars, whilst believed to be accurate are set out as a general outline only for guidance and do not constitute any part of an offer or contract. Intending purchasers should not rely on them as statements of representation of fact, but must satisfy themselves by inspection or otherwise as to their accuracy. No person in this firm's employment has the authority to make or give any representation or warranty in respect of the property.