



## Empire Square West, SE1

### £380,000

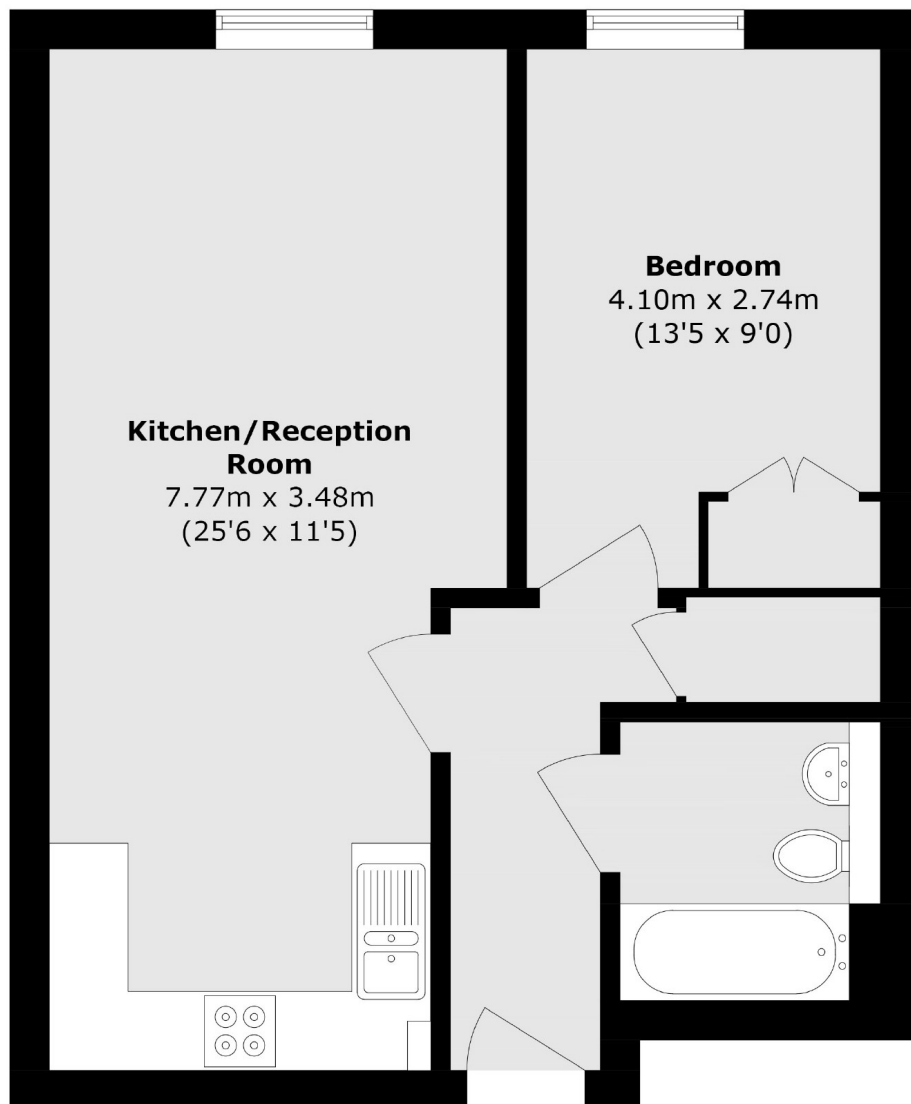
A highly attractive modern apartment, with a spacious open plan living room and kitchen, a generous double bedroom, three piece bathroom and ample built-in storage. Benefitting from a 24 hour concierge and sold chain free.

Empire Square enjoys a prime location in the heart of SE1, at the foot of historic Borough High Street. Just 0.4 miles from London Bridge Station and the bustling Borough Market, it's surrounded by a mix of artisan food stalls, trendy cafés, and riverside pubs, plus numerous other attractions.

### Features

- One Double Bedroom
- Open Plan Living Space
- 24 Hour Concierge
- Excellent Transport Links
- Very Central Location
- Chain Free Sale

# Empire Square West, London, SE1



Total area (approx.): 47.9 sq. m (515.5 sq. ft)