

# SNELLERS

ESTATE AGENTS



## Water Lane, KT1

£2,800 PCM

A beautifully presented two-bedroom, two-bathroom apartment in the heart of Kingston upon Thames, finished to a high modern standard throughout and offering bright, spacious open-plan living. The property further benefits from a substantial private terrace with stunning views overlooking the River Thames, perfect for entertaining and relaxing alike.



A beautifully presented two-bedroom, two-bathroom apartment in the heart of Kingston upon Thames, finished to a high modern standard throughout and offering bright, spacious open-plan living. The property further benefits from a substantial private terrace with stunning views overlooking the River Thames, perfect for entertaining and relaxing alike.

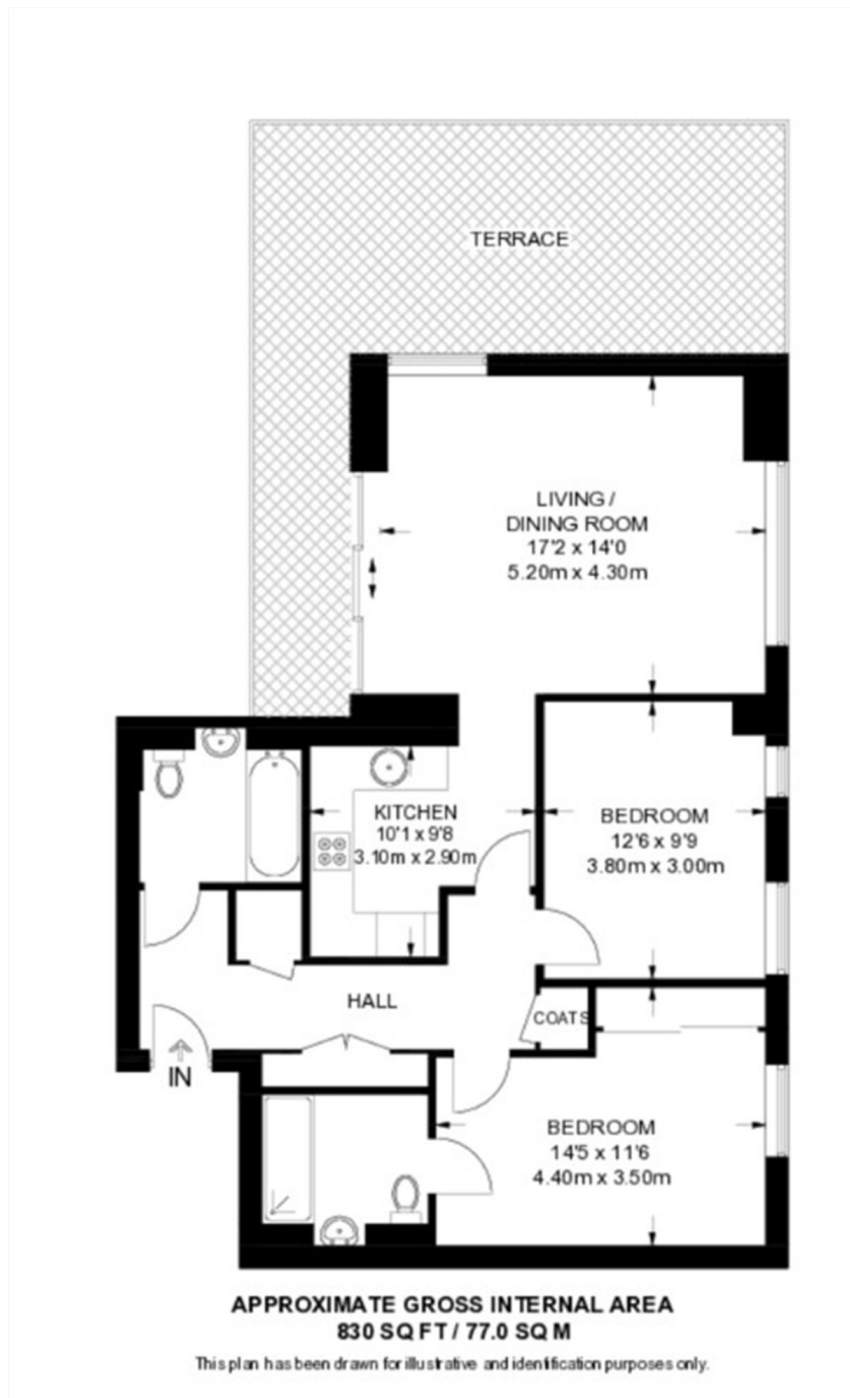
Elder House enjoys a prime riverside position, ideally located for the cafés, restaurants and leisure along the Thames, with Kingston Town Centre moments away offering an excellent selection of luxury shopping and entertainment.

- Two Double Bedrooms • Two Bathrooms • South After Development •
- Private Parking Available • Direct River Views • Central Location •



# SNELLERS

ESTATE AGENTS



Snellers Kingston Lettings  
17-21 Richmond Road  
Kingston  
KT2 5BW  
020 8546 0505  
kingstonlettings@snellers.co.uk

Energy Rating: We aim to make our particulars both accurate and reliable. However they are not guaranteed; nor do they form part of an offer or contract. If you require clarification on any points then please contact us, especially if you're traveling some distance to view. Please note that appliances and heating systems have not been tested and therefore no warranties can be given as to their good working order