



## Gowers Street, Rochdale, OL16

£1,285 PCM

This development of 54 properties is in the heart of the action in Rochdale, within walking distance of everything you would need for work and play.

The Ellesmere is a stunning home built with your needs in mind. Downstairs, there is a generous living room, hallway and WC. The rear of the property has a magnificent living/kitchen area with a range of contemporary fitted units with integrated appliances. The room has French windows opening onto and overlooking the rear garden as well as a series of skylights which flood the room with light – an ideal space for both family time and entertaining.

Upstairs there is a spacious family bathroom complete with a bath and shower, a master bedroom with fitted, mirrored wardrobes and two further well-proportioned bedrooms. At the top of the stairs you will also find a handy store cupboard.

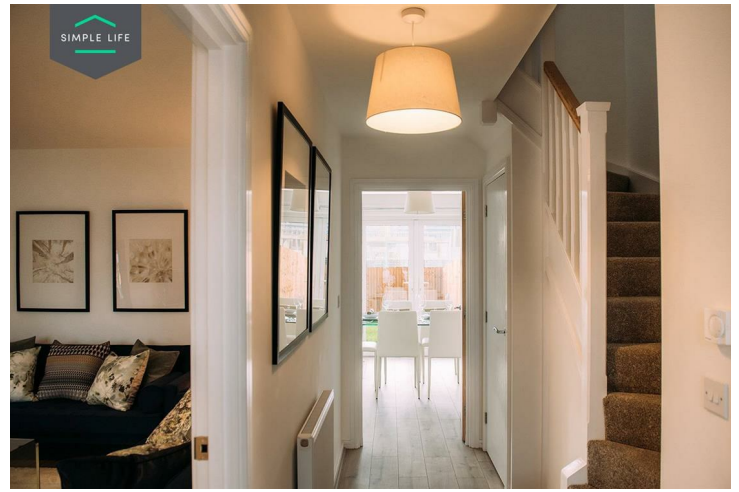
You're spoilt for choice when it comes to education, with 21 Outstanding and Good rated primary schools within 3 miles, and 11 secondaries in 5, as well as 5 colleges nearby too.

Being just a 20minute walk from Rochdale Station gives you further access to the wider region including a 15minute train into Manchester centre. You're also well placed for the M62, enabling you to take the M60 ring road further afield, including Manchester Airport, accessible in under an hour.

Rochwood Rise benefits from instant access to hospitals, leisure centres, and shops, as well as additional downtime activities such as the Rochdale Pioneers Museum and Touchstones Rochdale art gallery.

Deposit £1470  
Holding Deposit £290  
Unfurnished  
Council Tax B  
Available 4th June 2026





## Key Features

- Private driveway
- Fitted wardrobes to master bedroom
- Fridge freezer
- Oven and hob
- Dark ash style worktops
- Security alarm system
- Dishwasher
- Washing/drying machine
- Light wash wood effect flooring
- Modern, white kitchen units

## Location

