



6 Palmer Crescent, Carlton – NG4 1ER

Guide Price £270,000



6 Palmer Crescent

Carlton, Nottingham

QUIET CUL-DE-SAC LOCATION WITH NO CHAIN!
Three-bed detached home with spacious dual aspect lounge, fitted kitchen alongside delightful sunroom, south aspect tiered rear garden, driveway and carport.

Council Tax band: C

Tenure: Freehold

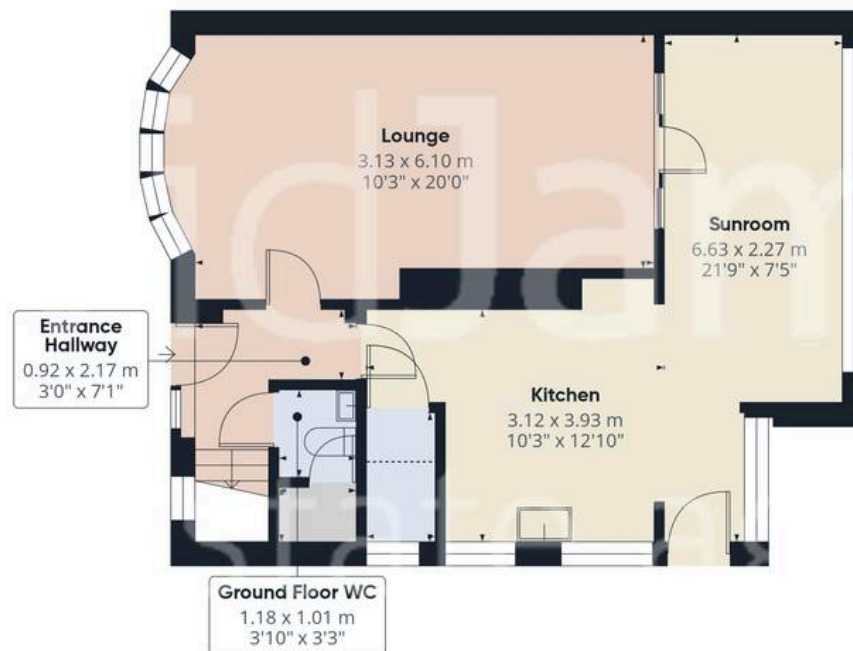
EPC Energy Efficiency Rating: E

EPC Environmental Impact Rating:

- Spacious detached family home
- Offered to the market with no upward chain
- Peaceful cul-de-sac position close to amenities, bus routes and local links
- Welcoming entrance hall with practical ground floor WC
- Bright dual aspect lounge with bay window and feature fireplace
- Well-equipped fitted kitchen opening into light-filled sunroom
- Three bedrooms (second and third bedroom with fitted wardrobes)
- Bright and airy two-piece bathroom suite with separate WC
- Delightful tiered south-facing rear garden with seating areas
- Carport and gated driveway with ample off-street parking







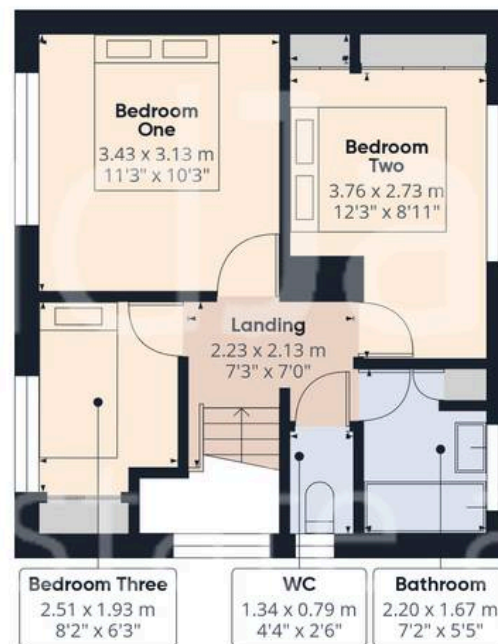
Floor 0

Approximate total area⁽¹⁾

88.3 m²
952 ft²

Reduced headroom

1.8 m²
20 ft²



Floor 1

(1) Excluding balconies and terraces

Reduced headroom

..... Below 1.5 m/5 ft

Calculations reference the RICS IPMS 3C standard. Measurements are approximate and not to scale. This floor plan is intended for illustration only.

GIRAFFE360





David James Estate Agents

376 Carlton Hill, Carlton - NG4 1JA

0115 987 8957 • carlton@david-james.com • www.david-james.com

These particulars are produced in good faith and are set out as a general guide only. Measurements are approximate and floor plans are for illustrative purposes only. Services have not been tested. We have established professional relationships with third-party suppliers for the provision of services to Clients, details of which can be found on the property listing page on our website.