



MARYLEBONE ROAD, NW1

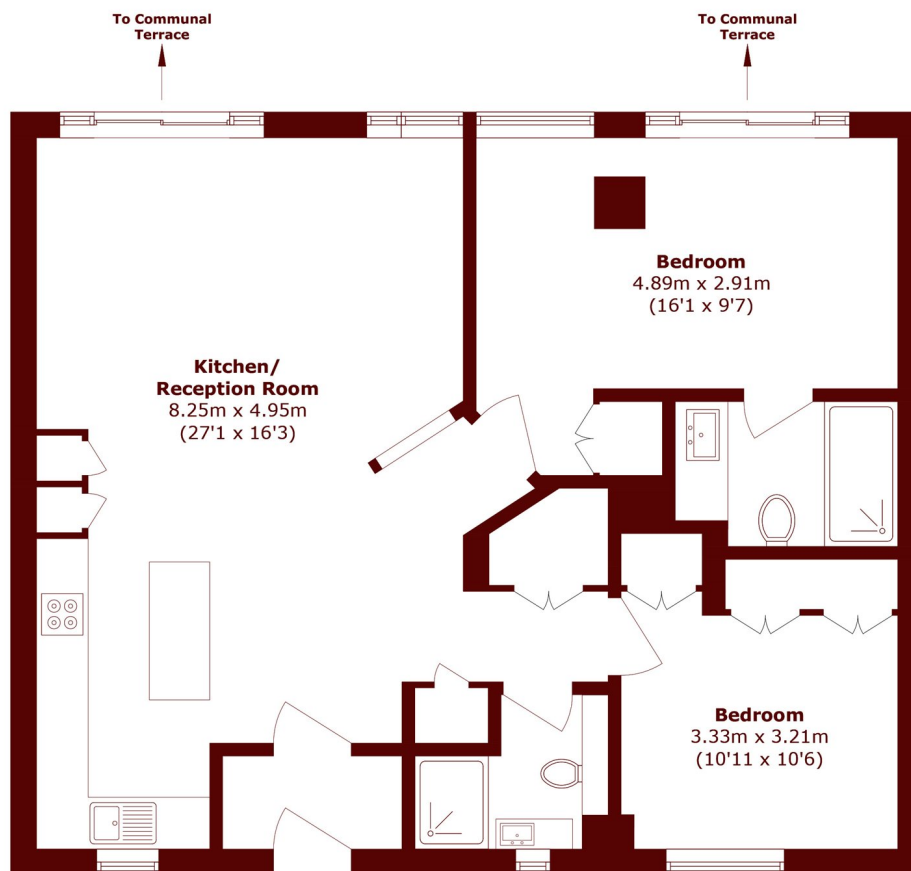
£1,050,000

This beautifully redesigned two-bedroom, two-bathroom flat offers high-specification modern living throughout. Featuring impressive high ceilings and a bright open-plan layout, the south-facing reception room is

Two double bedrooms
Gym
Porter

Two parking spaces
Share of freehold
Meticulously finished

STEP INSIDE MARYLEBONE ROAD



Second Floor

Total area (approx.): 82.4 sq. m (887.0 sq. ft)

Marylebone & Mayfair
020 7935 1775

Energy Rating: C We aim to make our particulars both accurate and reliable. However, they are not guaranteed; nor do they form part of an offer or contract. If you require clarification on any points then please contact us, especially if you're traveling some distance to view. Please note that appliances and heating systems have not been tested and therefore no warranties can be given as to their good working order

MARSH &
PARSONS