



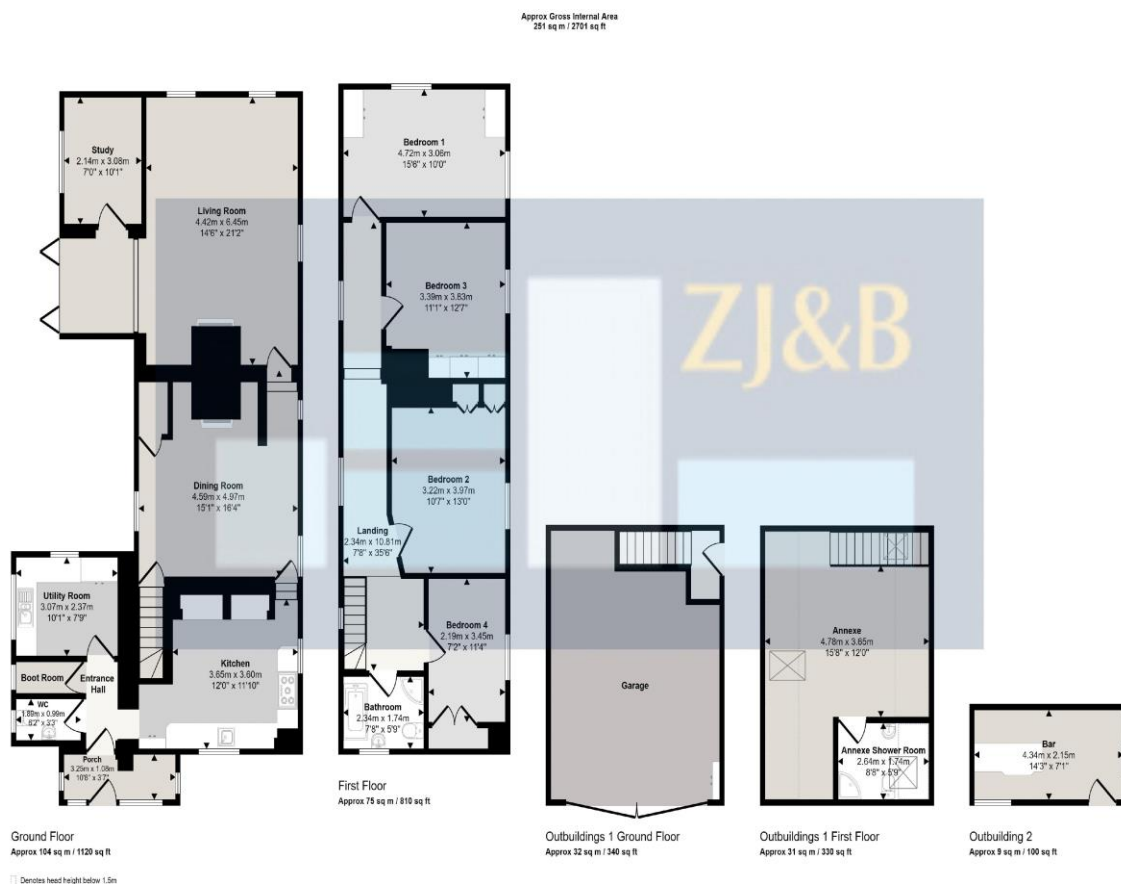
**Inglenook, 15 Myddle,
Shrewsbury, Shropshire, SY4 3RX**

Offers in the Region Of £549,950

A stunning Grade II listed, four-bedroom detached home.



Set within the picturesque village of Myddle, Inglenook is a stunning Grade II listed, four-bedroom detached home. The main accommodation begins with an entrance porch leading to a welcoming entrance hall, a boot room, WC, and a utility room. The modern fitted kitchen, complete with quartz worktops, opens seamlessly into a spacious dining room featuring a characterful fireplace. The large living room boasts a wood burner and bi-fold doors opening onto the rear garden, while a study on the ground floor offers versatile space. Upstairs, all four generously sized bedrooms benefit from built-in wardrobes, and the modern fitted four-piece bathroom suite features a roll-top bath, shower, WC, and hand basin. Externally, the property boasts a large detached garage with a self-contained annex above, complete with living accommodation and a shower room. The generous garden offers a large lawn area, a decked corner ideal for alfresco dining, and a second garden area with its own driveway entrance, laid to lawn and featuring an ornamental pond, shrubs, and fruit trees. The current owners have converted a sandstone outbuilding into a beautiful home bar, perfect for entertaining. The village of Myddle enjoys a number of amenities, including a shop, primary school, and a pub restaurant. With ample parking to the front and many period features, including exposed oak beams, Inglenook is a rare gem, ideal for family life.



This floorplan is only for illustrative purposes and is not to scale. Measurements of rooms, doors, windows, and any items are approximate and no responsibility is taken for any error, omission or mis-statement. Some of items such as bedroom suites are representations only and may not look like the real items. Made with Made Sprazzy 360.

FLOOR PLANS FOR GUIDANCE ONLY



Energy performance certificate (EPC)

15 Myrtle SHREWSBURY SY4 3RX	Energy rating D	Valid until: 12 December 2034
		Certificate number: 0734-6022-3409-0587-5296

Property type	Detached house
Total floor area	178 square metres

Rules on letting this property

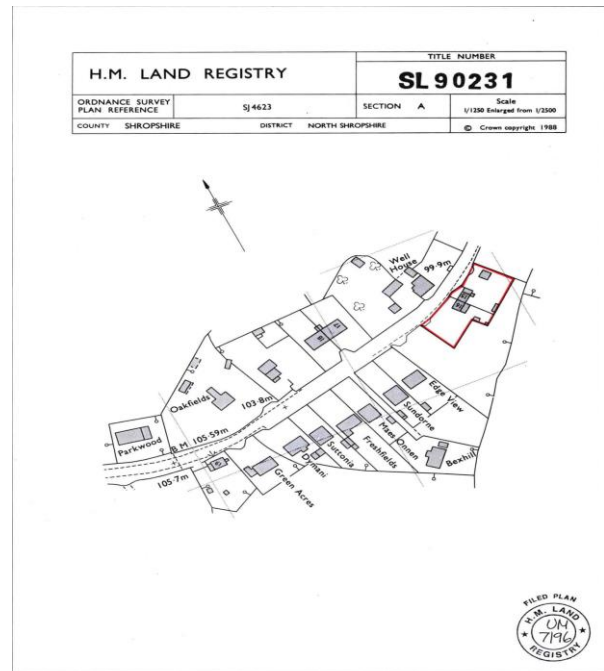
Properties can be let if they have an energy rating from A to E.

You can read [guidance for landlords on the regulations and exemptions \(https://www.gov.uk/guidance/domestic-private-rented-property-minimum-energy-efficiency-standard-landlord-guidance\)](https://www.gov.uk/guidance/domestic-private-rented-property-minimum-energy-efficiency-standard-landlord-guidance).

Energy rating and score

This property's energy rating is D. It has the potential to be C.

[See how to improve this property's energy efficiency.](#)



This is a copy of the title plan on 7 JUL 2023 at 18:21:14. This copy does not take account of any application made after that time even if still pending in HM Land Registry when this copy was issued.
This copy is not an 'Official Copy' of the title plan. An official copy of the title plan is admissible in evidence in a court to the same extent as the original. A person is entitled to be indemnified by the registrar if he or she suffers loss by reason of a mistake in an official copy. If you want to obtain an official copy, the HM Land Registry web site explains how to do this.
HM Land Registry endeavours to maintain high quality and scale accuracy of title plan images. The quality and accuracy of any print will depend on your printer, your computer and its print settings. This title plan shows the general position, not the exact line, of the boundaries. It may be subject to distortions in scale. Measurements scaled from this plan may not match measurements taken on the same points on the ground.
This title is dealt with by HM Land Registry, Telford Office.
© Crown Copyright. Produced by HM Land Registry. Further reproduction in whole or in part is prohibited without the prior written permission of Ordnance Survey. Licence Number AC000051063.

Council Tax Band E

Tenure: Our client advises us that the property is Freehold. Should you proceed with the purchase of the property, these details must be verified by your solicitor.

NB: The mention of any appliances and/or services within these sales particulars does not imply that they are in full and efficient working order.

Viewing: To arrange a viewing call in at our office or telephone **01743 248351**

FREE MORTGAGE ADVICE

Whether you are a first-time buyer, moving home, buying as an investor or looking to save on your mortgage payments, you could benefit from some **free** no obligation mortgage advice.

Contact **Stephen Bath** of Bee Mortgages, who is based at our office

01743 248351

Whole of Market clear and relevant tailored to your individual needs and circumstances.

Your home may be repossessed if you do not keep up repayments on your mortgage