



Bryan Bishop
and partners

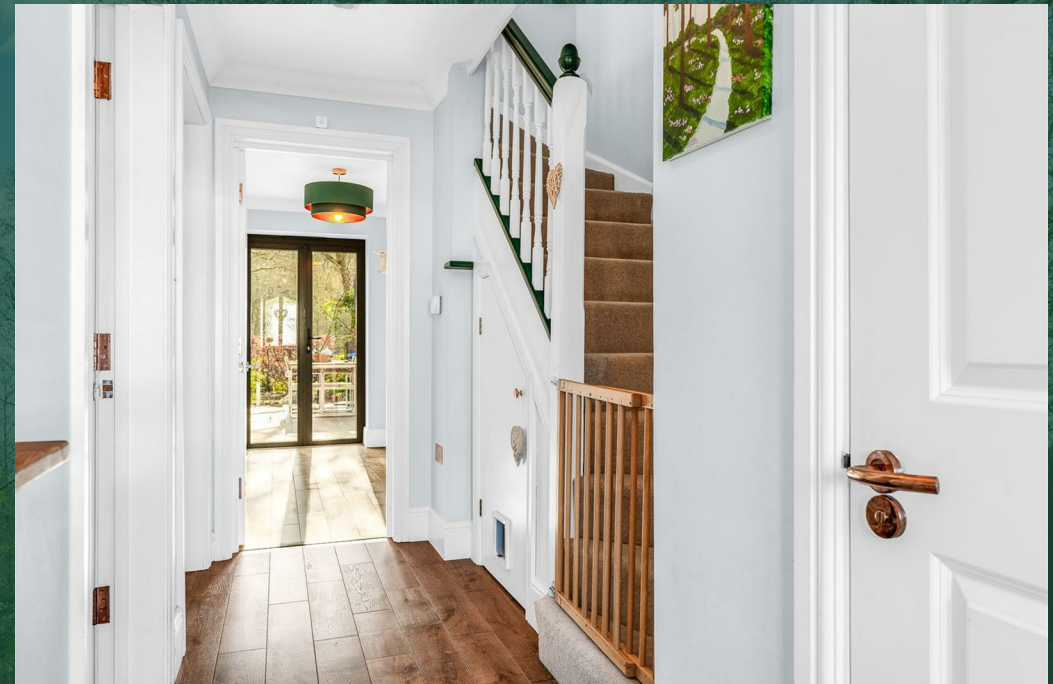
The Walled Garden
Welwyn, AL6 0BZ

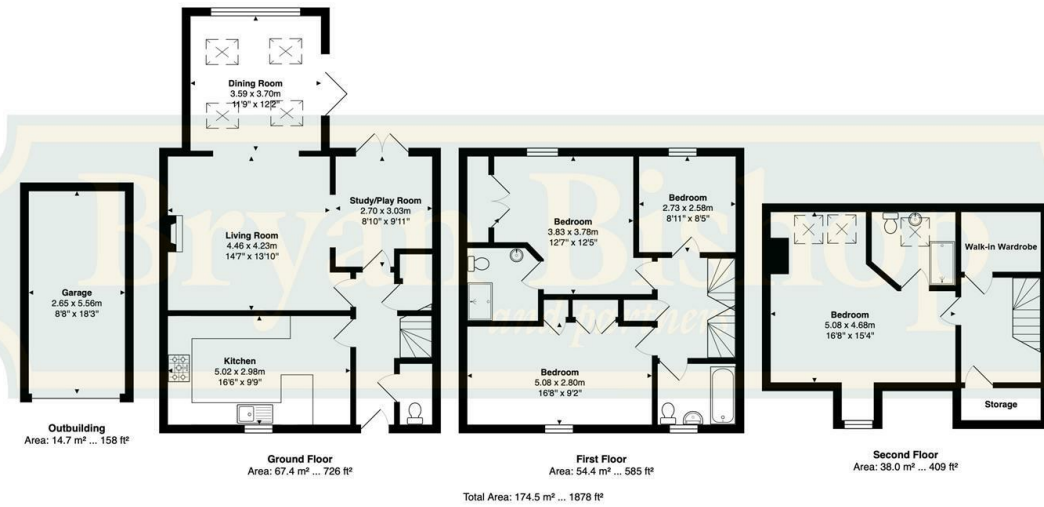
The Walled Garden

Welwyn, AL6 0BZ

Summary

Summary:
Bryan Bishop and Partners are delighted to bring to the market this superb four bedroom, three bathroom family home presented in immaculate decorative order throughout. Set in the idyllic countryside of Tewin Water, within a select, high grade development by Charles Church, this deceptively spacious home enjoys a completely rural position, yet is just a few minutes from the popular and vibrant villages of Tewin and Welwyn. Arranged over three floors, the layout of this attractive property is intelligently designed to allow you great flexibility in how you use the rooms to best meet your family's needs, along with plenty of parking, a separate garage and a neat rear garden that opens directly out into the extensive communal grounds that lead to the banks of the gently flowing river Mimram.





Energy Efficiency Rating	
	Potential
Very energy efficient - lower running costs	
(92 plus) A	83
(81-91) B	
(69-80) C	
(55-68) D	
(39-54) E	
(21-38) F	
(1-20) G	
Not energy efficient - higher running costs	
70	
England & Wales	

EU Directive 2002/91/EC



Bryan Bishop
and partners

6a High Street | Welwyn | AL6 9EG | 01438 718877 | info@bryanbishop.co.uk | www.bryanbishop.co.uk Find us on

