



Charing Cross Road

London, WC2H

£2,400 per month
(£553.85 per week)

Positioned in a gated development off Charing Cross Road, this one bedroom apartment has been recently renovated to a high standard. Located on the third floor with lift access, the property has a smart floorplan and is stylishly furnished.

CHESTERTONS



Charing Cross Road

London, WC2H

•



Positioned in a gated development off Charing Cross Road, this one bedroom apartment has been recently renovated to a high standard. Located on the third floor with lift access, the property has a smart floorplan and is stylishly furnished.

Upon entry to the building, you are greeted with a well maintained courtyard. The property has a smart layout, with spacious separate kitchen, bright living space, and bedroom with ample storage- perfect for a single tenant.

Sandringham Flats is conveniently located for excellent transport links from Leicester Square underground station under 5 minutes

Minimum Term: 12 months
Deposit Required: £2,769.23
Local Authority: City of Westminster
Council Tax Band: D
EPC Rating: C
Furnished

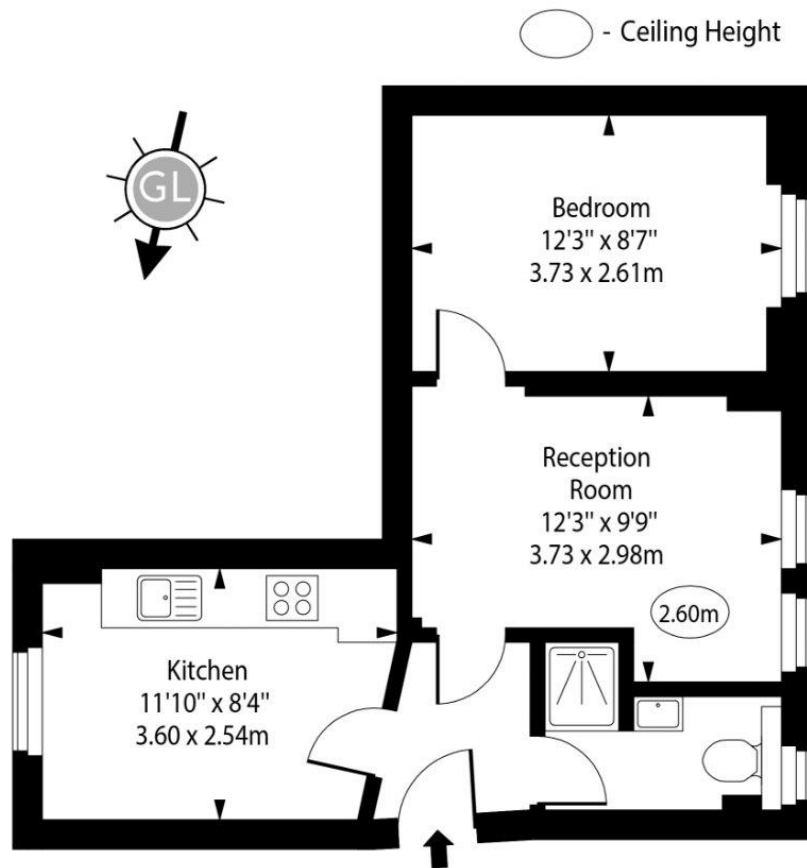
Score	Energy rating	Current	Potential
92+	A		
81-91	B		
69-80	C	71 C	78 C
55-68	D		
39-54	E		
21-38	F		
1-20	G		

Chestertons Covent Garden Lettings

196 Shaftesbury Avenue
 Covent Garden
 London
 WC2H 8JF
coventgardenlettingsusers@chestertons.co.uk
 02030408400
chestertons.co.uk

Additional tenant charges apply (fees apply to non-AST tenancies only)
 Tenancy Agreement Fee: £300
 References per Tenant/Guarantor: £60
 Inventory check (approx. £100 – £250 inc. VAT)
chestertons.co.uk/property-to-rent/applicable-fees

Sandringham Flats, Charing Cross Road



Third Floor

Approx Gross Internal Area 385 Sq Ft - 35.77 Sq M

Every attempt has been made to ensure the accuracy of the floor plan shown. However, all measurements, fixtures, fittings, and data shown are approximate interpretations and for illustrative purposes only. Measured according to the RICS. Not To Scale.

www.goldlens.co.uk

Ref. No. 030308WI

