



01452 690553



sales@applebys.estate



www.applebysestateagents.co.uk



3 Casey Close

, Gloucester, GL1 3QP

£200,000



This very well presented two bedroom terraced house is situated in the popular location of Casey Close, Gloucester. This property would make a perfect first time purchase or investment. , centrally located and in close proximity to Gloucester Royal Hospital***CHAIN FREE***



Entrance Hall

Kitchen 8'1 x 8'0 (2.46m x 2.44m)

Lounge/Dining Room 16'8 x 12'1 (5.08m x 3.68m)

Bedroom 1 12'9 x 12'1 (3.89m x 3.68m)

Bedroom 2 10'6 x 7'7 (3.20m x 2.31m)

Bathroom

OUTSIDE

To the front is a small garden area and pathway to the front door

parking is adjacent to the property in a car park with two tandem allocated spaces.

The rear garden is laid to lawn there is a slab base at the bottom of the garden ideal space for a shed.

Services

Mains drainage, Gas central heating

Gloucester City Council tax band B

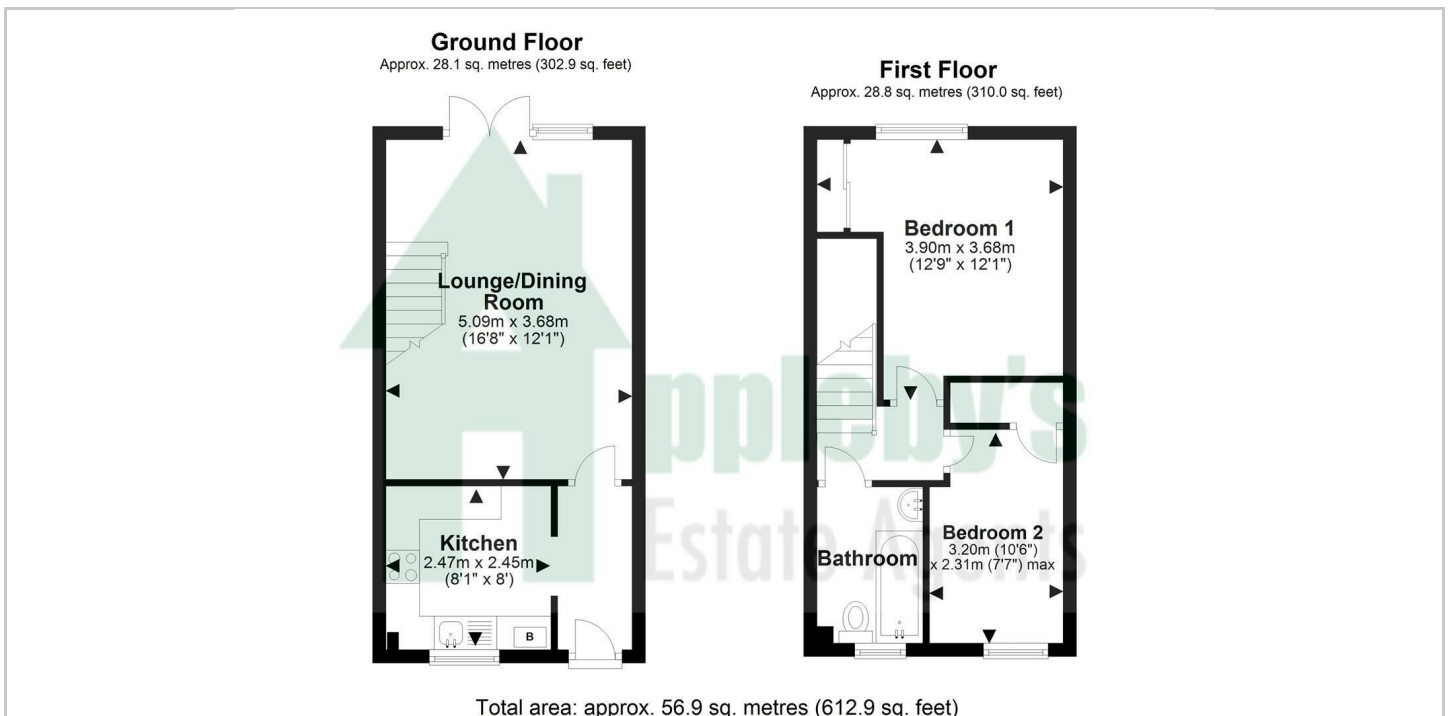
Tenure

Freehold

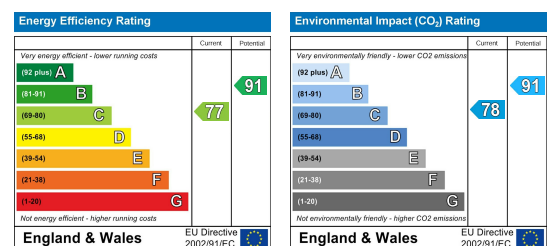
Area Map



Floor Plans



Energy Efficiency Graph



These particulars, whilst believed to be accurate are set out as a general outline only for guidance and do not constitute any part of an offer or contract. Intending purchasers should not rely on them as statements of representation of fact, but must satisfy themselves by inspection or otherwise as to their accuracy. No person in this firm's employment has the authority to make or give any representation or warranty in respect of the property.