



26 Clifton Street

Failsworth, Manchester, M35 9EE

Asking Price £290,000



THREE BEDROOM SEMI-DETACHED | STUNNING DOUBLE-STOREY EXTENSION | LOFT ROOM | DRIVEWAY | LARGE REAR GARDEN | FINISHED TO A HIGH STANDARD

Cousins Estate Agents are delighted to present this beautifully presented three-bedroom semi-detached home, ideally situated on the ever-popular Clifton Street in Failsworth, Manchester. Extended and finished to an exceptional standard throughout, this impressive property offers spacious and versatile accommodation, making it the perfect choice for growing families.

The ground floor features a welcoming entrance leading into a bright and spacious reception room, ideal for relaxing or entertaining. To the rear, the recently completed double-storey extension has transformed the home, creating a superb modern living space that is perfect for family life.

The first floor offers three generously sized bedrooms and a contemporary family bathroom. In addition, the property benefits from a thoughtfully designed loft room, providing



FRONT OF PROPERTY

LOUNGE

DINING ROOM

KITCHEN

BEDROOM ONE

BEDROOM TWO

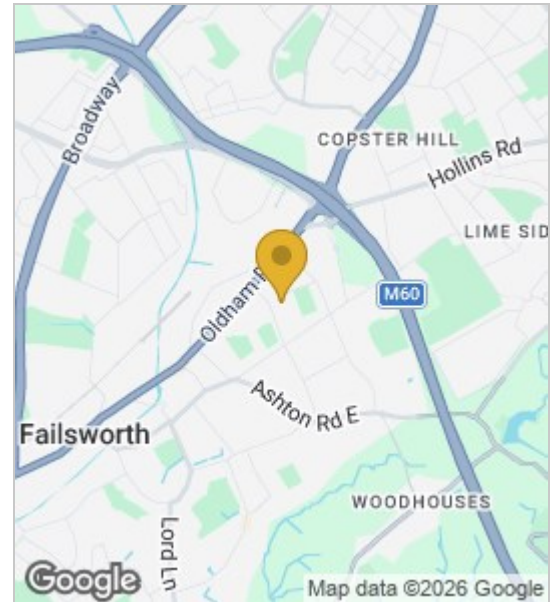
BEDROOM THREE

LOFT ROOM

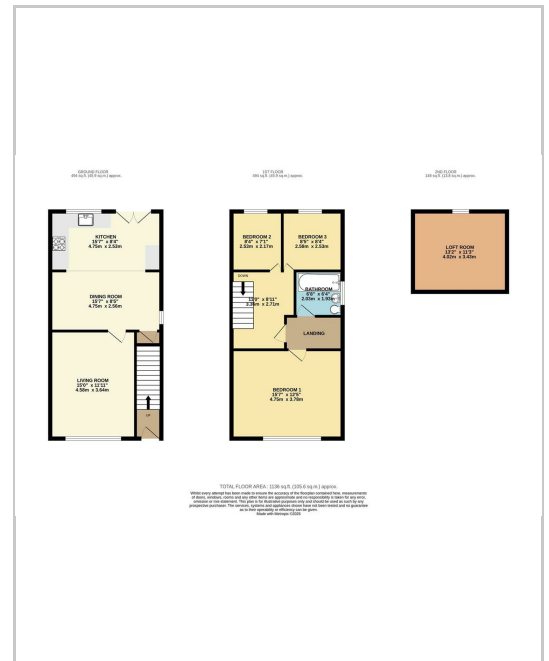
BATHROOM

BACK GARDEN

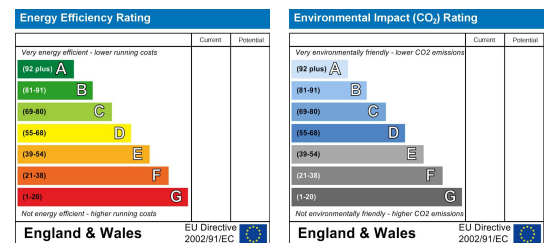
Area Map



Floor Plans



Energy Efficiency Graph



These particulars, whilst believed to be accurate are set out as a general outline only for guidance and do not constitute any part of an offer or contract. Intending purchasers should not rely on them as statements of representation of fact, but must satisfy themselves by inspection or otherwise as to their accuracy. No person in this firm's employment has the authority to make or give any representation or warranty in respect of the property.

