

TO LET

**Thicket Road  
Anerley  
London, SE20**

**£1,400 pcm**

Well presented 1 Bedroom Flat  
with Garage - Unfurnished







## Description

Hindwoods are delighted to welcome to the market, this well presented one bedroom first floor flat, with balcony to the rear.

Situated off the main Anerley Road, within half a mile of Anerley, Crystal Palace and Penge West Stations.

The accommodation comprises of.

### Entrance Hall

Radiator. Cornice. Built in cupboard.

### Lounge

Three sash windows. Radiator. Cornice. Picture rail.

### Bathroom

White suite comprising enclosed bath with thermostatically controlled shower over, pedestal hand basin and W.C. Radiator. Extractor fan. Part tiled walls.

### Bedroom

Radiator. Cornice. French doors to balcony.

### Kitchen

Range of wall and base units with inset stainless steel sink unit having mixer tap and worktop surfaces. Built in electric oven, gas hob and cooker hood. Plumbing for washing machine. Tiled splashback. Radiator. Biasi boiler.

Garage at rear.



## Viewings

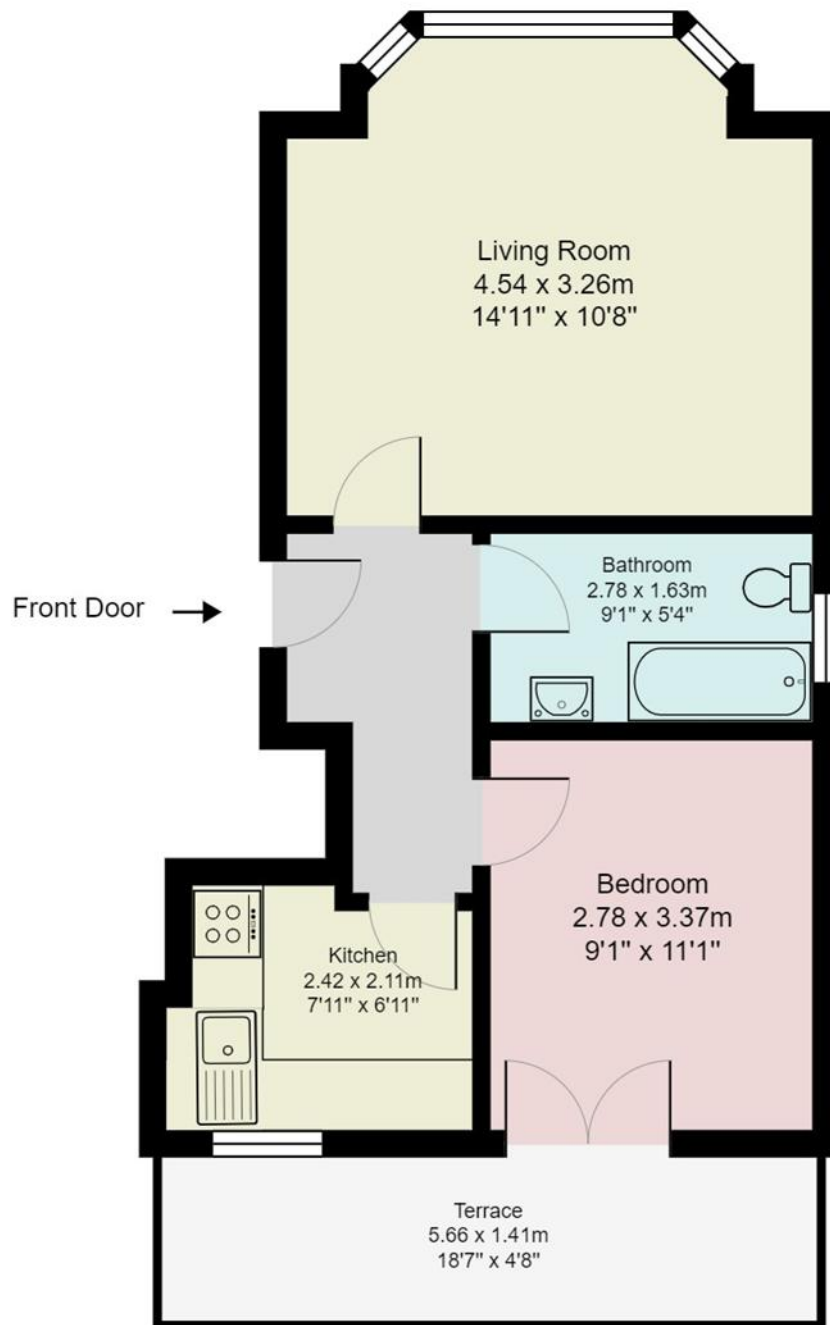
Strictly via Hindwoods.

Donna Distin

[D.distin@hindwoods.co.uk](mailto:D.distin@hindwoods.co.uk)



## 4 Thicket Road



Gross Internal Area: 38.4 m<sup>2</sup> ... 414 ft<sup>2</sup>

All measurements are approximate and for display purposes only.