
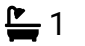



4 Park Royal Court,

Offers Over £130,000

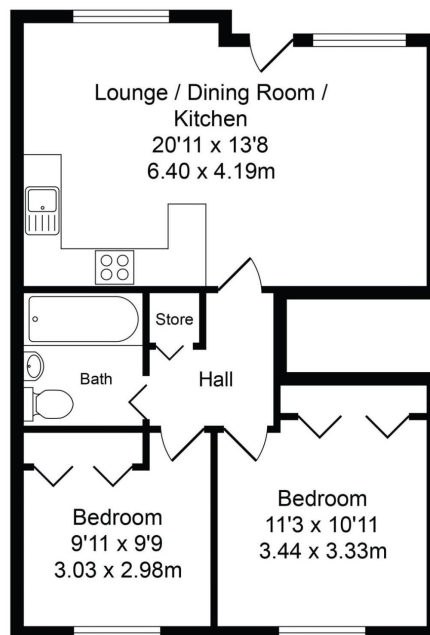
 2  1  1



- Allocated private parking with visitor spaces
- Open-plan lounge, kitchen and dining area
- Single-level living
- Approximately 608 sq ft
- Close to bus and train stations, M6 and M61
- Two-bedroom ground-floor flat with private entrance
- Modern fitted kitchen with integrated appliances
- External private storage cupboard for bikes and belongings
- Walking distance to Chorley town centre

Total Approx. Floor Area 608 Sq.ft. (56.5 Sq.M.)

Whilst every effort is made to accurately reproduce these floor plans, measurements are approximate, not to scale and for illustrative purposes only



Approx. Floor
Area 608 Sq.Ft
(56.5 Sq.M.)

Well-presented two-bedroom ground-floor flat with its own private entrance, open-plan living, modern fitted kitchen with integrated appliances, external storage cupboard, allocated parking and visitor spaces, set in the popular Park Royal Court development close to Chorley town centre.