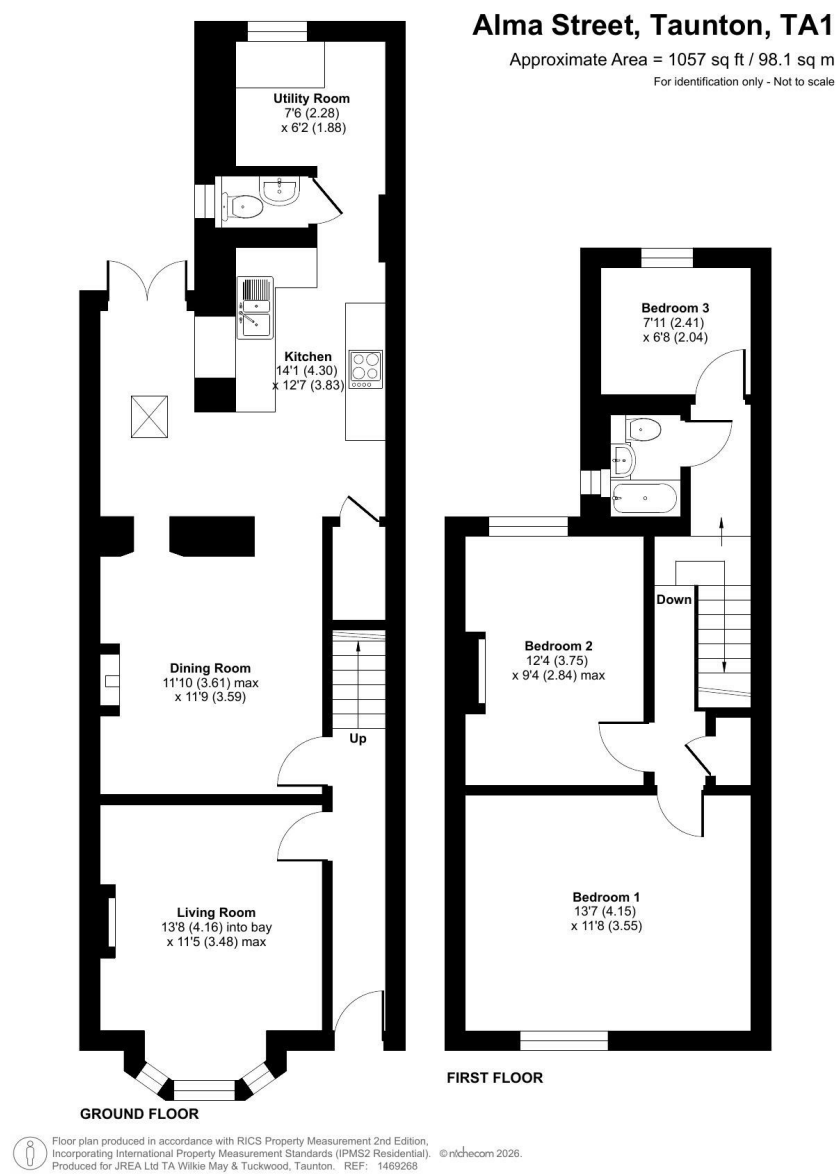


Floor Plan



WM&T

Description

- Victorian Terrace Home
- Three Bedrooms
- uPVC D/G & Gas C/H
- Off Road Parking
- Close to The Town Centre
- No Onward Chain

A well-presented three-bedroom Victorian mid-terrace home situated within convenient reach of Taunton town centre. Offering spacious and versatile accommodation arranged over two floors, the property benefits from uPVC double glazing, mains gas central heating, off-road parking, and a generous, well-maintained rear garden.



The accommodation is entered via a front door leading into a welcoming entrance hall. At the front of the property is a comfortable living room featuring a bay window and an attractive Victorian-style fireplace, creating a charming focal point.

A separate dining room provides an ideal space for entertaining and has access through to both the sun room and kitchen, enhancing the property's flexible living arrangement. The kitchen is fitted with a matching range of wall and base units complemented by work surfaces and tiled splashbacks. Integrated appliances include a stainless steel oven, gas hob, extractor hood and dishwasher.

Beyond the kitchen is a useful utility room with space and plumbing for a washing machine and tumble dryer, together with a wall-mounted gas boiler. A cloakroom completes the ground floor accommodation.

To the first floor are three bedrooms and a re-fitted family bathroom, finished to a modern standard.

Externally, the rear garden is fully enclosed and enjoys a good degree of privacy. Designed for ease of maintenance, it is laid to decorative gravel and artificial lawn, with a timber shed providing useful storage. The property also benefits from off-road parking for two vehicles, a valuable feature for a home so conveniently located close to the town centre.

WM&T