



Green Walk, SE1

£625,000

A highly attractive top-floor penthouse in a boutique development. This spacious apartment features an open-plan living room and kitchen with floor-to-ceiling windows that flood the space with natural light. The generously proportioned double bedroom and a stylish three-piece bathroom complete the interior.

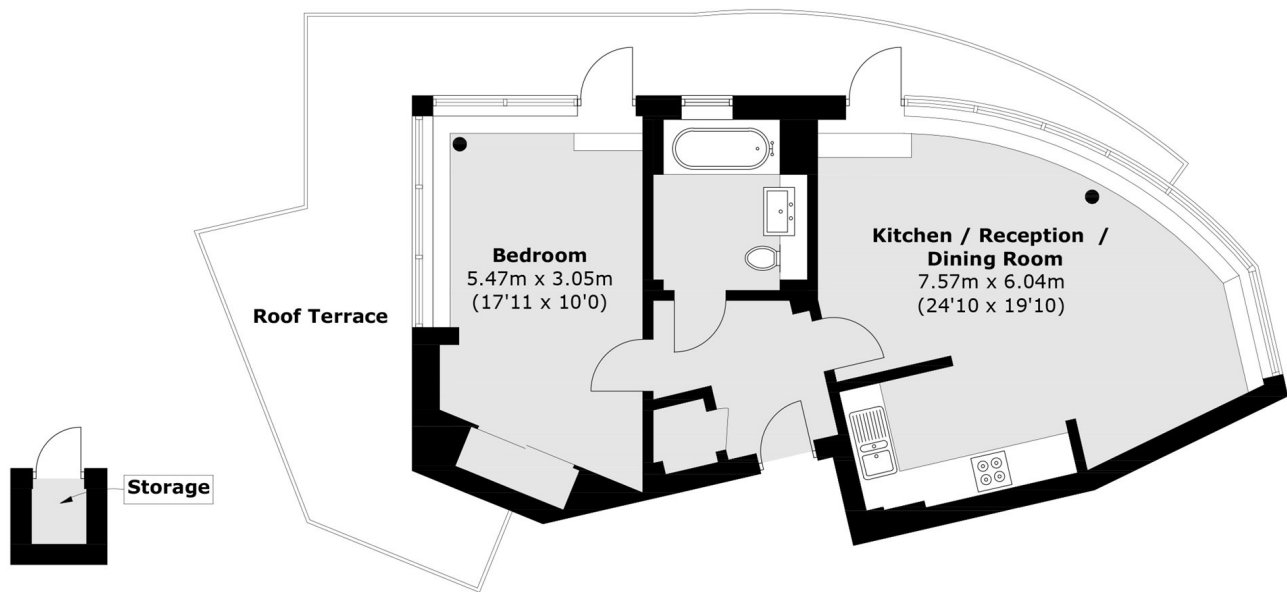
The property's standout feature is the extensive wrap-around roof terrace, enjoying south and west-facing aspects perfect for relaxing, entertaining, or al-fresco dining with exceptional views.

Green Walk is a charming side street just moments from Bermondsey Street, with London Bridge, Borough Market and the Southbank all close at hand. The property sits immediately adjacent to the iconic Hartley's Jam Factory, placing it at the heart of one of SE1's most distinctive neighbourhoods.

Features

- Fantastic Wrap-Around Terrace
- Penthouse/Top Floor
- Apartment South West facing
- Excellent Condition
- Wonderful Natural Light
- 999 year lease from 2012
- Chain Free Sale

Green Walk, London, SE1



(Not Shown In Actual
Location / Orientation)

Second Floor

Approx Internal Area (approx.): 56.8 sq. m (611.3 sq. ft)
External Storage: 0.7 sq. m (7.5 sq. ft)
Roof Terrace: 27.4 sq. m (294.9 sq. ft)

Dexters

London Bridge
54 Borough High Street
London
SE1 1XL
Sales
020 7650 5 100

Energy Rating: . We aim to make our particulars both accurate and reliable. However they are not guaranteed; nor do they form part of an offer or contract. If you require clarification on any points then please contact us, especially if you're traveling some distance to view. Please note that appliances and heating systems have not been tested and therefore no warranties can be given as to their good working order.

 **RICS** | Regulated
Estate Agent
and Letting Agent

[dexters.co.uk](https://www.dexters.co.uk)