



KITTIWAKE
BODRUCAN HILL
PORTMELLON PL26 6PS

Philip Martin

ESTATE AGENTS, CHARTERED SURVEYORS, VALUERS & AUCTIONEERS



KITTIWAKE

BODRUGAN HILL PORTMELLON PL26 6PS

FABULOUS DETACHED MODERN HOUSE WITH FAR
REACHING SEA AND COASTAL VIEWS

Tucked away in a private setting yet within walking
distance of the beach and coastal footpath.

Currently two double bedrooms, sitting/dining room,
kitchen/breakfast room, shower room and cloakroom.

Planning permission granted for a third bedroom and
additional reception room.

Detached double garage. Studio. Parking for four cars plus
space for motorhome, boats etc.

A real gem - early viewing essential.

Freehold. EPC - D Council tax - Band C.

GUIDE PRICE £750,000

Philip Martin

PHILIP MARTIN

9 Cathedral Lane, Truro, Cornwall, TR1 2QS

Truro: 01872 242244 **St Mawes:** 01326 270008

E: sales@philip-martin.co.uk

www.philip-martin.co.uk



The particulars are issued on the understanding that all negotiations are conducted through Philip Martin who for themselves or for the Vendor whose agents they are, give notice that:

(a) Whilst every care has been taken in preparation of these particulars, their accuracy is not guaranteed, and they do not constitute any part of an offer or contract. Any intended purchaser must satisfy himself by inspection or otherwise as to the correctness of each of the statements contained in these particulars.

(b) They do not accept liability for any inaccuracy in these particulars nor for any travelling expenses incurred by the applicants in viewing properties that may have been let, sold or withdrawn.

GENERAL COMMENTS

The location of Kittiwake is incredible. It enjoys complete privacy and magnificent uninterrupted sea and coastal views, it is very special indeed. The house occupies a lovely mature site with gently sloping gardens that adjoin farmland, it is extremely quiet. The house is built to a high standard with many wonderful features that will appeal to many. Planning permission has been granted to extend the house and create an additional third bedroom and another reception room. The reverse level accommodation makes the very best of the views. There are two double bedrooms, shower room and store room on the ground floor with large sitting/dining room, kitchen/breakfast room, utility and cloakroom upstairs. A feature Biomass woodburner heats the hot water and radiators. Outside is a lovely sub tropical garden with lawns and many mature shrubs and plants and productive vegetable garden. There is plenty of sitting out space to take advantage of the views and the sunny south facing aspect. A driveway provides plenty of parking and space for boats, motorhomes etc and there is a huge double garage/workshop. A timber studio has a window looking straight out to sea and this has enormous potential to convert into a holiday let/additional accommodation (subject to consent).

LOCATION

Portmellon lies in a sheltered position on the south Cornish coast between the villages of Mevagissey and Gorran Haven. The harbour and fishing port of Mevagissey is about one mile away and here there is a more comprehensive range of facilities including primary school, pubs, restaurants, church and a variety of shops. St. Austell is about six miles away whilst the city of Truro with its Cathedral and fine shopping centre is about sixteen miles. The coastal footpaths leading from Portmellon provides spectacular sea views and there are also many beautiful nearby country walks in this designated area of outstanding natural beauty.

In greater detail the accommodation comprises (all measurements are approximate):

ENTRANCE HALL

Bespoke solid Beech entrance door. Stairs to first floor with storage cupboard below housing hot water tank. Tiled floor, spotlights, radiator. Utility cupboard with space and plumbing for washing machine. Doors to both bedrooms and shower room.

BEDROOM ONE

5.71m x 3.61m (18'8" x 11'10")

Window to front enjoying views over the garden and sea beyond. Four wall lights, radiator, telephone point. Built in wardrobes.

SHOWER ROOM

A white suite comprising low level w.c, feature sink on a marble worktop with storage below, walk in shower with fully tiled surround and Mira shower over. Frosted window to rear. Spotlights, heated towel rail, extractor fan. Shelved storage cupboard.



BEDROOM TWO

5.70m x 3.29m (18'8" x 10'9")

Window overlooking the front garden with sea and coast beyond. Storage cupboard, three wall lights, radiator.

FIRST FLOOR

The house has been designed on a reverse level principle so that the first floor makes the very best of the fabulous sea, coastal and countryside views. There is access into the gardens from the lounge/dining room and kitchen. Planning permission has been granted to extend on the sea side

creating another reception room which will have amazing views. The staircase will be moved which will completely open up the lounge/dining room.

CLOAKROOM

Low level w.c, small sink with cupboard below, tiled floor.

KITCHEN/BREAKFAST ROOM

5.14m x 3.83m (16'10" x 12'6")

A recent addition to the house, designed to make the very best of the views. A light twin aspect room with windows to the front and side and

Philip Martin



door opening into the rear. The large bi folding side window is perfect for entertaining as it opens completely to a large terrace that enjoys a sunny, southerly aspect and far reaching views. Two French oak lintels are lovely features and the window cills are also solid oak. A large island unit has an integral gas hob with drawers and storage below and extractor fan over with light. Double sink with mixer tap above, two integral Bosch ovens. Feature built in solid oak table with bench seats and storage below. Tiled floor. Walk in larder cupboard with light.

SITTING/DINING ROOM

9.76m x 5.71m (32'0" x 18'8")

French doors opening onto a balcony with access into the front garden and dormer window both enjoying fabulous countryside, sea and coastal views. Exposed roof trusses, solid oak floor, two radiators, telephone and television points, three velux windows. Feature Klover biomass boiler which looks like a wood burning stove but heats the radiators throughout the house. Stairs to ground floor.

OUTSIDE

Kittiwake is approached from Bodrugan Hill and a gravel driveway leads to the electric double entrance gates that open into a brick driveway where there is parking for four cars and access to the garage/workshop. There is parking for a motorhome/caravan etc on the owned drive before the entrance gates.

DOUBLE GARAGE/WORKSHOP

8.70m x 5.10m (28'6" x 16'8")

Electric roller door. Window and half glazed pedestrian doorway to side. Light and power is connected.

GARDENS

The gardens and grounds are a real feature of the property and have been landscaped to take full advantage of the magnificent far reaching coastal views. The gardens enjoy complete privacy and a warm south facing aspect guaranteeing sun all day. Not only do they enjoy sea views but the rear and side gardens back onto open countryside with pleasant rural views. Along the driveway is a deep mature flowerbed with bamboo providing privacy, Mimosa, Magnolia and even a Burnt Sugar Tree. A pathway leads via a gate to the kitchen door past a log store and outside tap. The path continues to the west facing brick paved terrace which is sheltered and perfect for entertaining and barbecues. A composite decked path leads from here to the front entrance. The side garden enjoys stunning views and backs onto fields. A gently sloping lawn leads up to a larger lawn which has the best of the sea views. There are several raised vegetable beds, fabulous greenhouse and useful store at the front of the house and many outside lights. The foundations



and concrete pad for the extension have already been completed so the build will be quick and non intrusive to the wonderful gardens.

STUDIO

8.13m x 3.00m (26'8" x 9'10")

At the bottom of the garden facing out to sea is a large artist studio, this has huge potential, perfect for those looking to work from home or possibly create a small holiday let (subject to consent).

SERVICES

Mains water, electricity are connected. Private drainage. Council Tax Band- C

N.B

The electrical circuit, appliances and heating system have not been tested by the agents.

VIEWING

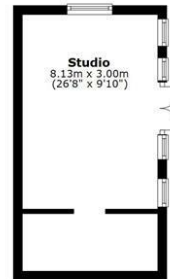
Strictly by Appointment through the Agents Philip Martin, 9 Cathedral Lane, Truro, TR1 2QS. Telephone: 01872 242244 or 3 Quayside Arcade, St. Mawes, Truro TR2 5DT. Telephone 01326 270008.

DIRECTIONS

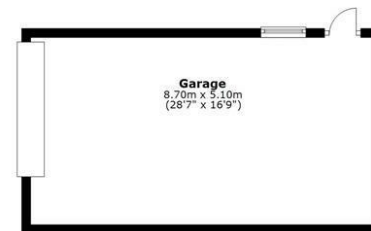
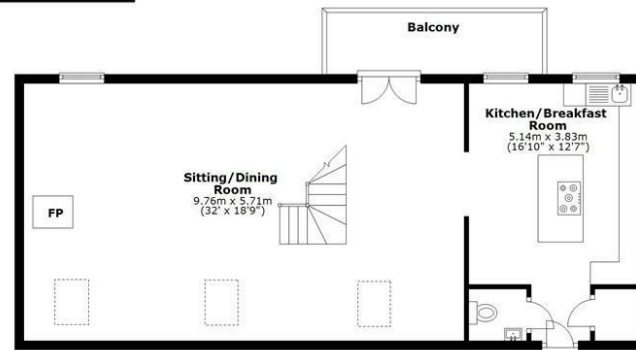
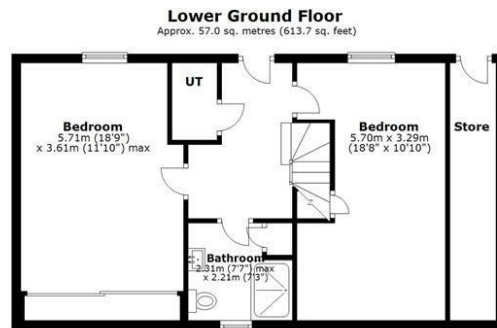
From Gorran Churchtown continue towards Portmellon. After a sharp right hand bend on Bodrugan Hill turn right signposted Bosprennis Gallery and follow this drive around to the left. Kittiwake is located at the end of the drive.

DATA PROTECTION

We treat all data confidentially and with the utmost care and respect. If you do not wish your personal details to be used by us for any specific purpose, then you can unsubscribe or change your communication preferences and contact methods at any time by informing us either by email or in writing at our offices in Truro or St Mawes.



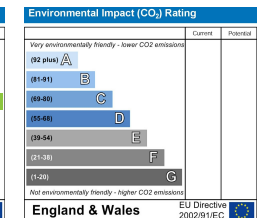
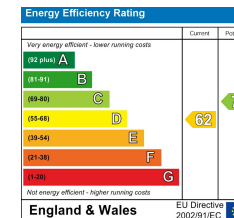
Ground Floor
Approx. 137.5 sq. metres (1480.1 sq. feet)



Total area: approx. 194.5 sq. metres (2093.9 sq. feet)

Whilst every attempt has been made to ensure the accuracy of the floorplan contained here, measurements of doors, windows, rooms and any other items are approximate and no responsibility is taken for any error, omission or mis-statement. This plan is for illustration purposes only and should be used as such.
Plans produced using PlanIt.

Kittiwake



Philip Martin





PHILIP MARTIN

Truro 01872 242244 St Mawes 01326 270008 www.philip-martin.co.uk

Philip Martin

ESTATE AGENTS, CHARTERED SURVEYORS, VALUERS & AUCTIONEERS