



## Ladbroke Grove, W10

£438 Per week

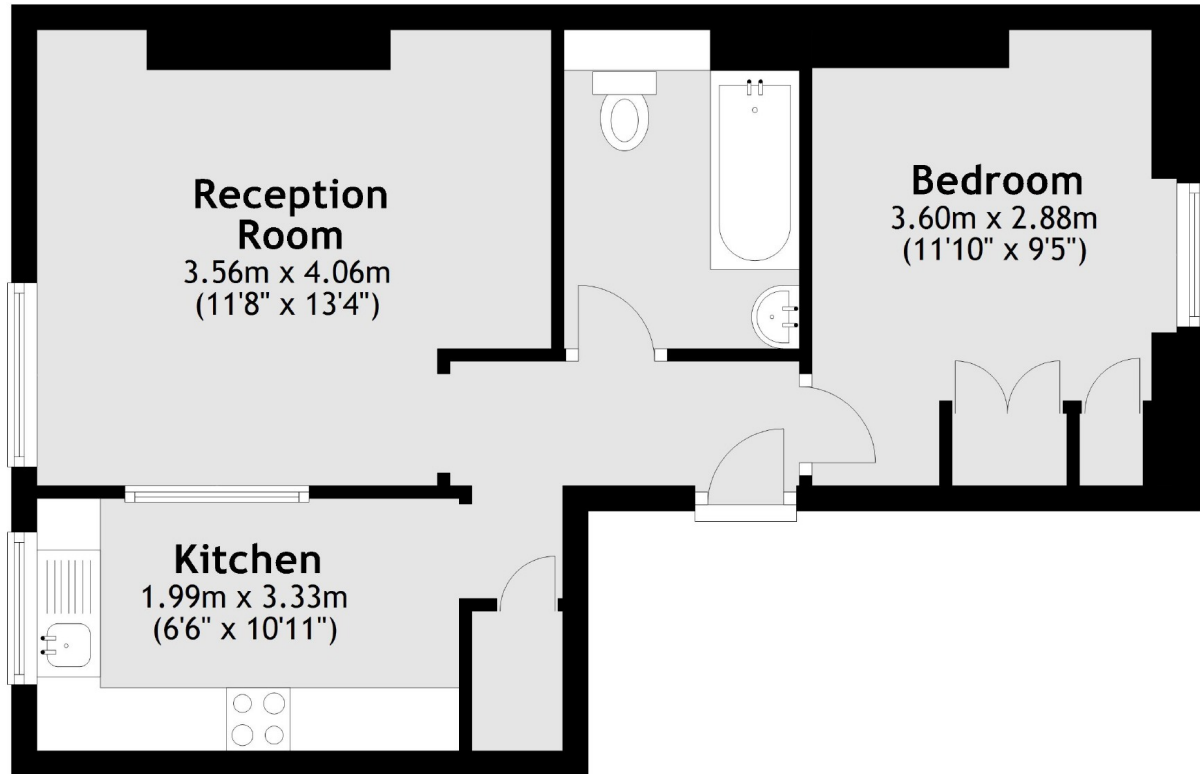
A bright and spacious one double bedroom top floor apartment set within a well-maintained period building on Ladbroke Grove, just moments from the heart of Notting Hill. The property offers a generous reception room with space to dine, a well-arranged separate kitchen, a good-sized double bedroom and a modern bathroom. Positioned on the top floor, the apartment benefits from excellent natural light and a peaceful feel throughout.

Ideally positioned just 0.1 miles from Ladbroke Grove Underground Station, the property is perfectly located for the excellent transport links and the vibrant boutiques, cafés and restaurants of Notting Hill and Portobello Road.

### Features

Top Floor Apartment  
Wooden Flooring  
Bright Outlook  
Period Building  
Unfurnished  
Ladbroke Grove Tube

# Ladbroke Grove, London, W10



Total area: approx. 41.0 sq. metres (441.5 sq. feet)