

## Wingham Close, Gillingham, ME8 6TD

Guide Price £280,000 -£300,000

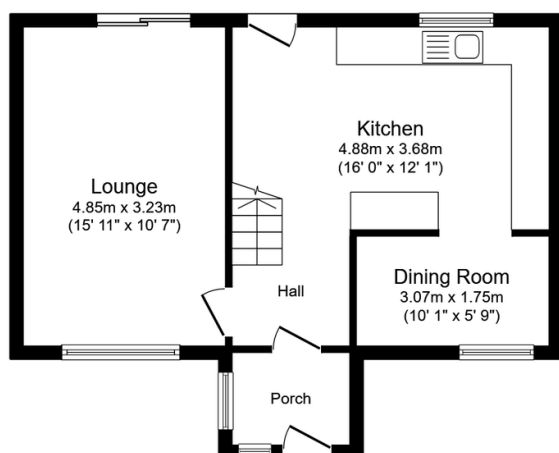
3 1 1



Guide Price £280,000-£300,000 Looking to renovate a home to your own taste and style? Then this home in Wingham Close could be the ideal home for you! With spacious bedrooms and large amounts of living space its currently a blank canvass. Located near a wide range of amenities and schools this home will be an ideal start to get on the property ladder!

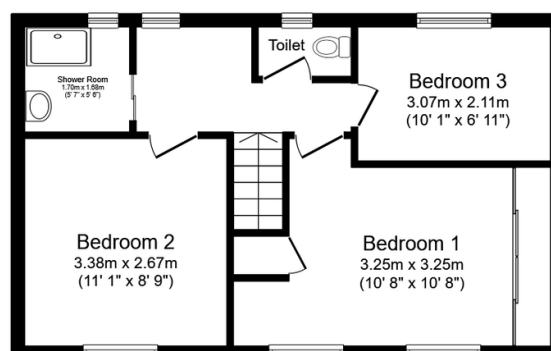
## Key Features

- 3 Bedroom Semi Detached Home
- No Forward Chain
- Renovation Opportunity
- Shower Room & Separate Toilet
- Spacious Bedrooms
- Near To Local Amenities
- Ideal Home To Get Started On The Property Ladder
- Near To Primary & Secondary Schools
- Tenure Freehold / Council Tax Band C
- QUOTE AP0490



**Ground Floor**

Floor area 45.6 sq.m. (491 sq.ft.)



**First Floor**

Floor area 42.6 sq.m. (459 sq.ft.)

**Total floor area: 88.2 sq.m. (949 sq.ft.)**

This floor plan is for illustrative purposes only. It is not drawn to scale. Any measurements, floor areas (including any total floor area), openings and orientations are approximate. No details are guaranteed, they cannot be relied upon for any purpose and do not form any part of any agreement. No liability is taken for any error, omission or misstatement. A party must rely upon its own inspection(s). Powered by [www.Propertybox.io](http://www.Propertybox.io)