



naomi j ryan
estate agents



Flat - Ground Floor



Bedrooms: 1



Bathrooms: 1



Receptions: 1



Heating: Electric



Parking: N/A



Garden: Communal



Council Tax Band: B

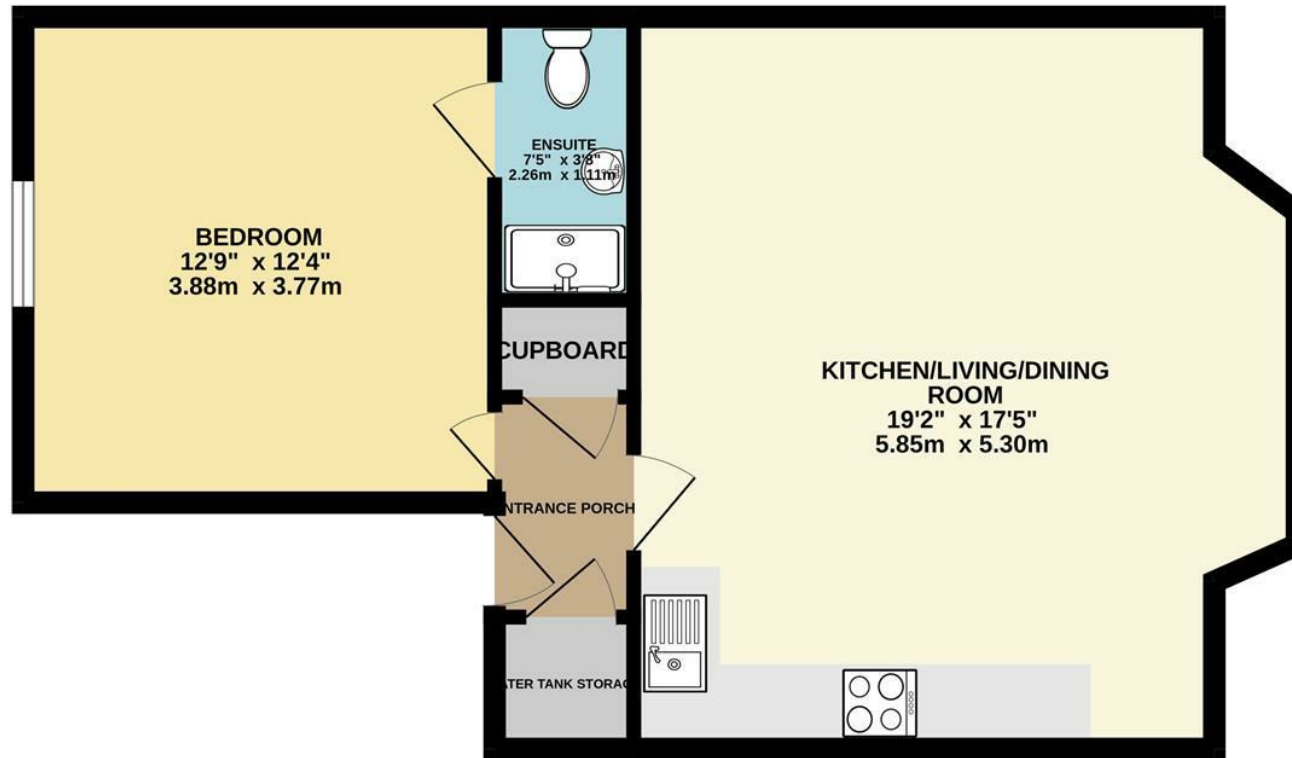
£1,025 Per Month

Barnfield Hill,

, Exeter, EX1 1SR

www.naomijryan.co.uk

GROUND FLOOR
541 sq.ft. (50.3 sq.m.) approx.



TOTAL FLOOR AREA : 541 sq.ft. (50.3 sq.m.) approx.

Whilst every attempt has been made to ensure the accuracy of the floorplan contained here, measurements of doors, windows, rooms and any other items are approximate and no responsibility is taken for any error, omission or mis-statement. This plan is for illustrative purposes only and should be used as such by any prospective purchaser. The services, systems and appliances shown have not been tested and no guarantee as to their operability or efficiency can be given.
Made with Metropix ©2025

SUMMARY

We are delighted to offer for Let this impressive and exceptionally well presented ground floor apartment in St Leonards, Exeter. Just a few minutes walk from the City Centre.

Barnfield House is an impressive period property that was fully converted in 2020 into ten apartments. The modern and contemporary accommodation gives light living spaces whilst retaining original features of the building and from the higher floors, city views and beyond can be enjoyed.

Careful design choices have been made to ensure the apartments provide comfortable and efficient living. In brief the property comprises; entrance hall, open plan living/dining/kitchen with large bay fronted with views over the enclosed communal garden, one double bedroom with ensuite shower room.

The kitchen comes fully equipped with washer/dryer, slimline dishwasher, fridge/freezer and oven/hob.

Outside the beautifully maintained communal gardens are in a secure, gated area with picnic benches and bike store.

Video Intercom entry system.

Available in mid-August, subject to satisfactory referencing with a longer term tenant preferred.

Would suit a professional individual or couple.

Please note, there is no allocated parking space or parking permit available for this property.

EPC Rating C.

Council Tax Band B.

In person viewings only.

Holding Deposit £236.



naomi j ryan
estate agents



