



**move**  
Property Sales & Lettings

Chatsworth Drive, Cheltenham



## Chatsworth Drive

Cheltenham, Cheltenham

Spacious six-bedroom semi in sought-after Leckhampton cul-de-sac. Flexible living, modern decor, large garden, summer house, parking, near top schools, shops, and transport links. Council Tax band: D

Tenure: Freehold

EPC Energy Efficiency Rating:

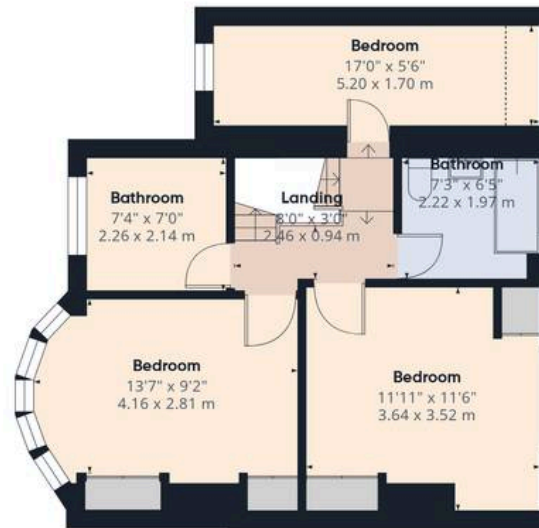
EPC Environmental Impact Rating:

- Six Bedroom Semi-Detached Family Home
- Extended And Versatile Accommodation Across Three Floors
- Sought-After Tree-Lined Cul-De-Sac Location
- Multiple Reception Areas Including Living And Dining Rooms
- Spacious Kitchen Diner With Utility Room
- Flexible First Floor Layout With Office/Nursery Potential
- Top Floor Bedroom With Views Towards Leckhampton Hill
- Downstairs Double Bedroom With En Suite
- Private Garden With Summer House and Fruit Trees
- Off-Road Parking And Excellent Local Schooling Nearby





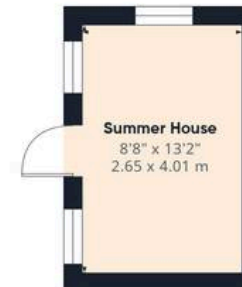
Ground Floor Building 1



Floor 1 Building 1



Floor 2 Building 1



Ground Floor Building 2

Approximate total area<sup>(1)</sup>

1674 ft<sup>2</sup>

155.6 m<sup>2</sup>

Reduced headroom

104 ft<sup>2</sup>

9.7 m<sup>2</sup>

(1) Excluding balconies and terraces

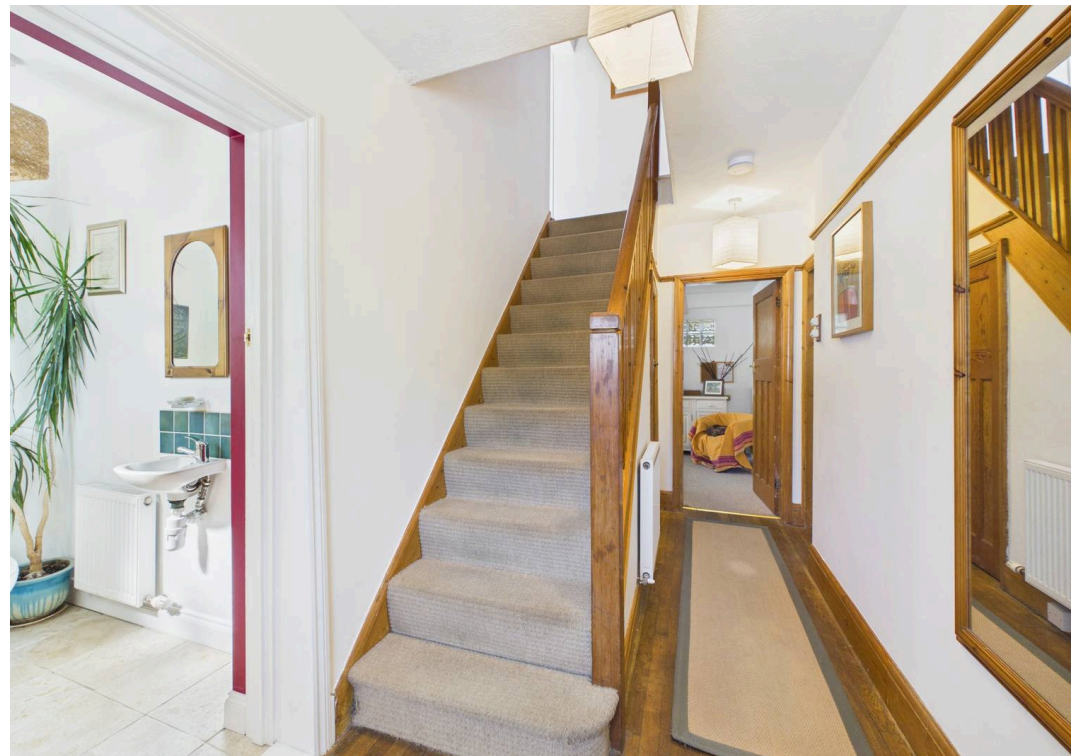
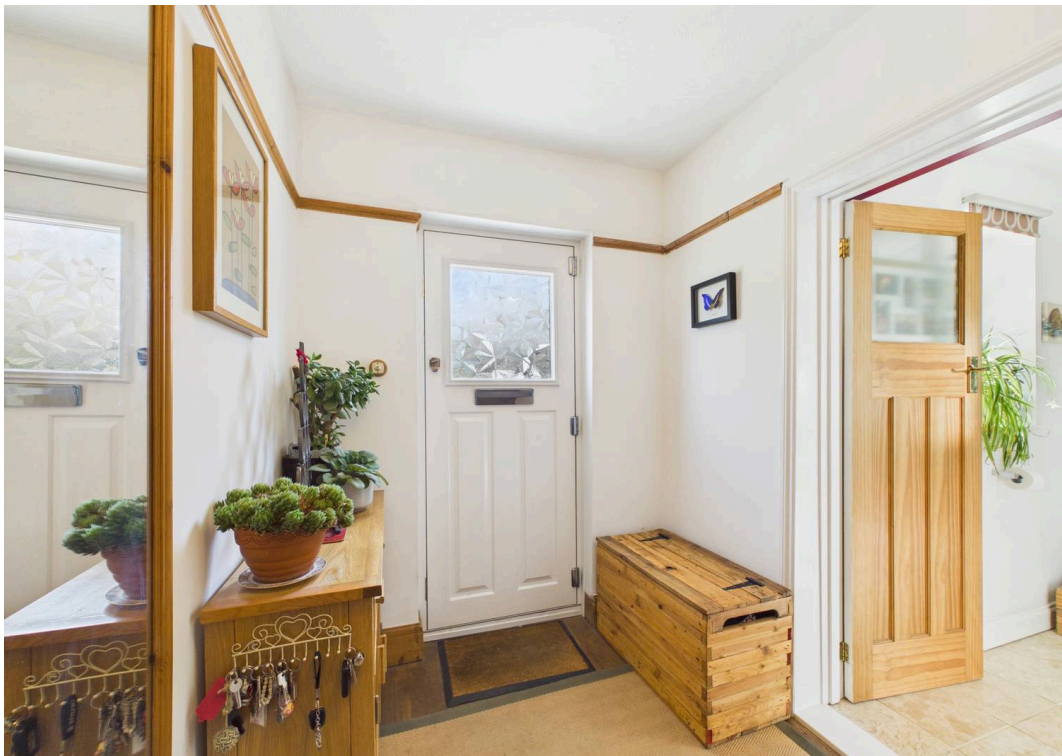
Reduced headroom

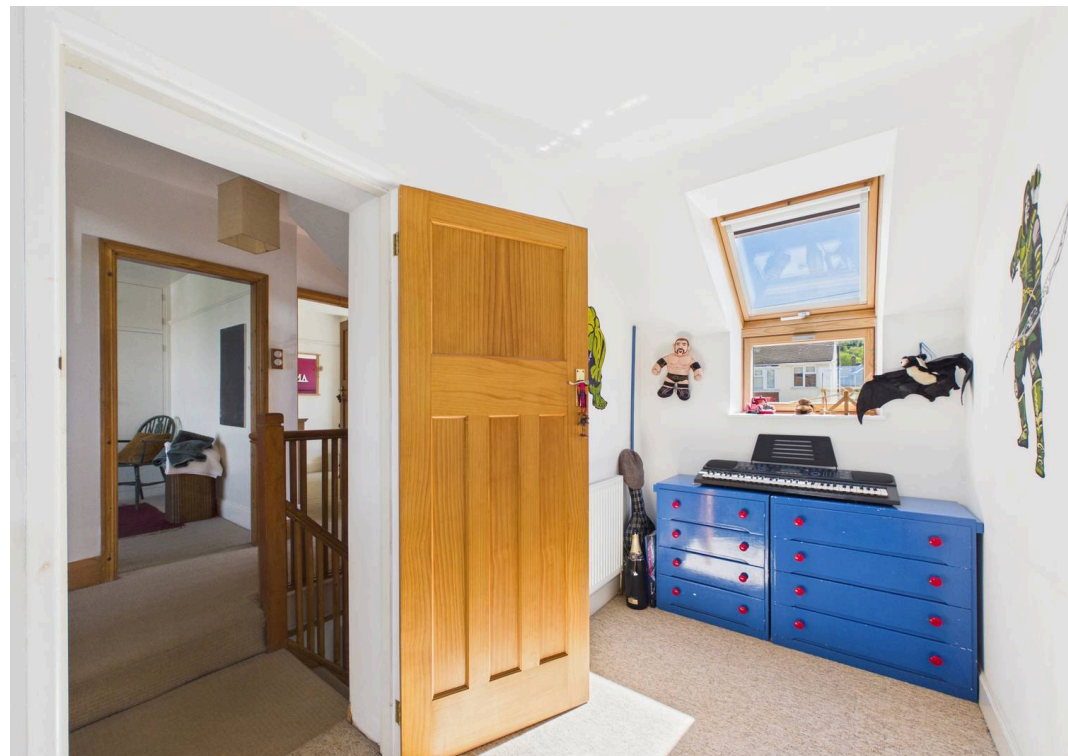
----- Below 5 ft/1.5 m

Calculations reference the RICS IPMS 3C standard. Measurements are approximate and not to scale. This floor plan is intended for illustration only.

GIRAFFE360













## Move Estate Agents Cheltenham

1 The Clarence Clarence Parade, Cheltenham - GL50 3NY

01242 257333

cheltenham@move.uk.net

move.uk.net/

**move**  
Property Sales & Lettings