



Deposit Available

## Price

£1,300 PCM

Fees Apply



Available 16/05/26

Newmans Close  
Hythe CT21

*Wards*

Helping you move forwards



## Main Features

- 2 bedroom first floor
- Lift access
- Car Port
- Unfurnished / Part furnished
- Alternative deposit option available
- Open house event



Deposit required is £1,500.00  
Shepway District - Council Tax Band Tax Band C

Renting a property is a big commitment and we recommend that you visit the local authority website and these websites which offer helpful information and advice about letting

[www.gov.uk/government/publications/how-to-rent](http://www.gov.uk/government/publications/how-to-rent)

[www.gov.uk/private-renting](http://www.gov.uk/private-renting)

[www.wardsofkent.co.uk/letting/our-tenancy-fees/](http://www.wardsofkent.co.uk/letting/our-tenancy-fees/)

[www.gov.uk/green-deal-energy-saving-measures](http://www.gov.uk/green-deal-energy-saving-measures)

Call Dover 01304 201109 ■ [wardsofkent.co.uk](http://wardsofkent.co.uk)

IMPORTANT INFORMATION: Please note that administration fees are charged in addition to the rent and security deposit. Please contact our Lettings Team who will confirm the total costs involved in renting this property. For clarification, we wish to inform the prospective tenant that we have prepared these details as a general guide. The agent has not carried out a detailed survey nor tested the services, appliances, or specific fittings (unless otherwise stated), and no warranty can be given as to their condition. All room measurements are taken at floor level. We strongly recommend that all the information which we provide about the property is verified by yourself and your advisers. The contents of this publication are © Wards, 2015. Wards is a trading name of Arun Estates Limited Registered in England No. 2597969

## Accommodation

### FIRST FLOOR

Open Plan Living: 5.62m x 4.47m 18'5" x 14'8"

Bedroom 2: 3.10m x 2.63m 10'2" x 8'7"

Bathroom: 1.88m x 1.96m 6'2" x 6'5"

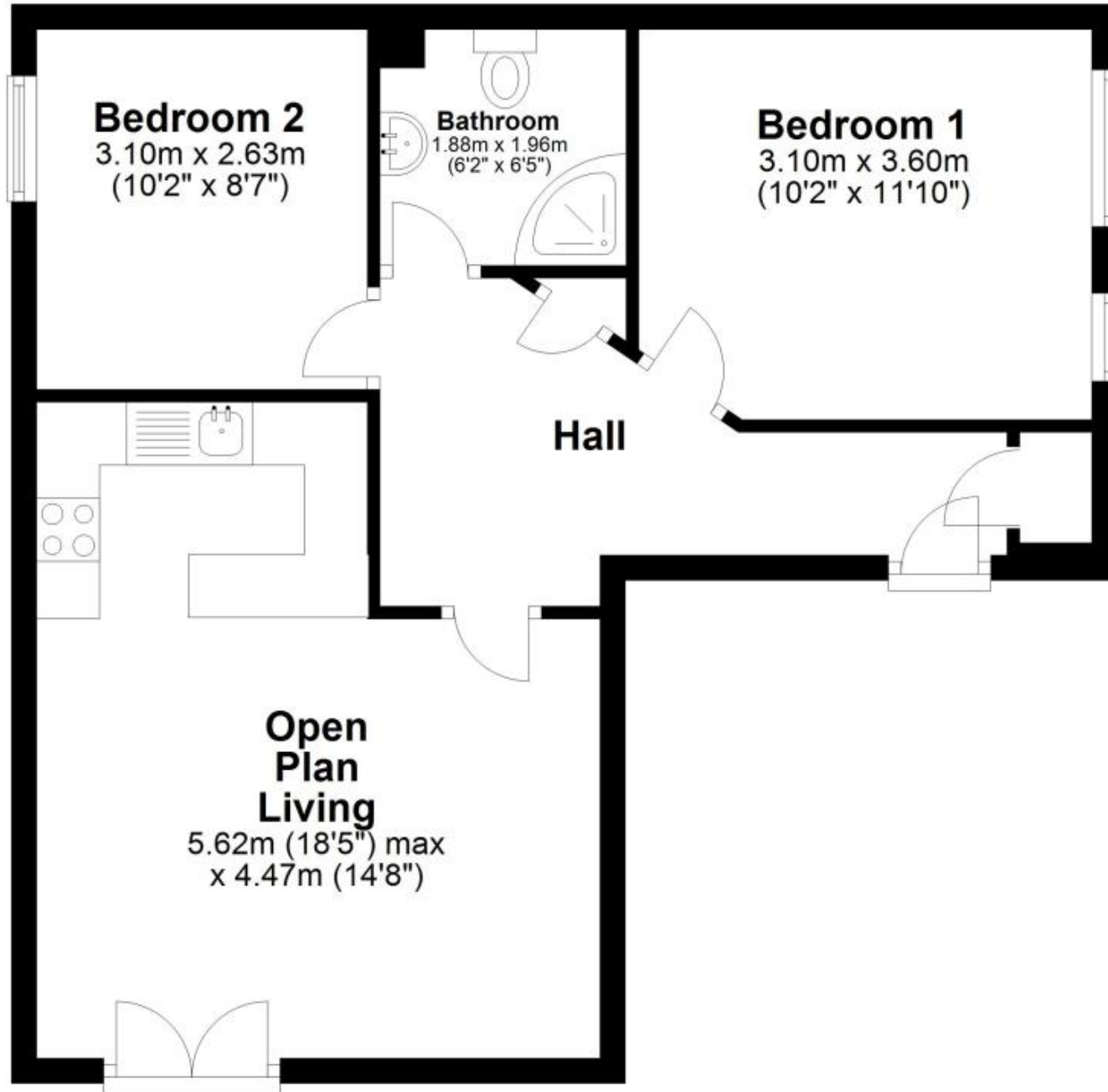
### Hall

Bedroom 1: 3.10m x 3.60m 10'2" x 11'10"



# First Floor

Approx. 54.4 sq. metres (585.8 sq. feet)



Total area: approx. 54.4 sq. metres (585.8 sq. feet)