



**GASCOIGNE  
HALMAN**

287 CHESTER ROAD, GRAPPENHALL, WARRINGTON

---

THE AREAS LEADING ESTATE AGENT





## 287 CHESTER ROAD, GRAPPENHALL, WARRINGTON

A well-presented three-bedroom semi-detached home, ideally located for easy access to Stockton Heath, Lymm, the motorway network, and Warrington town centre. The property offers a spacious detached garage, ample driveway parking, and attractive gardens to the front and rear. Sold with no onward chain.

The accommodation briefly comprises an entrance porch and hallway with stairs rising to the first floor. There is a comfortable lounge and a separate dining room, both featuring gas living-flame fires. The kitchen leads through to a rear conservatory currently used as a utility space, with a door opening onto the garden.





To the first floor are three bedrooms, including a master bedroom with fitted wardrobes, along with a modern shower room featuring a walk-in shower.

Externally, the property benefits from a lawned front garden and a driveway that extends along the side of the house to the detached garage. The rear garden is particularly appealing, bordered by mature planting and offering a pleasant, private outdoor space with greenhouse set behind the garage.

Sold with no onward chain.

## LOCATION

Stockton Heath village boasts a first-class range of shopping, schooling and recreational facilities. The nearby motorway system brings Manchester, Liverpool, Chester etc. within easy commuting distance and there are fast and frequent train services to London from local stations. Manchester International Airport can be reached normally in about twenty minutes by car and the area is surrounded by glorious Cheshire countryside.

## DIRECTIONS

SatNav: WA4 2QQ

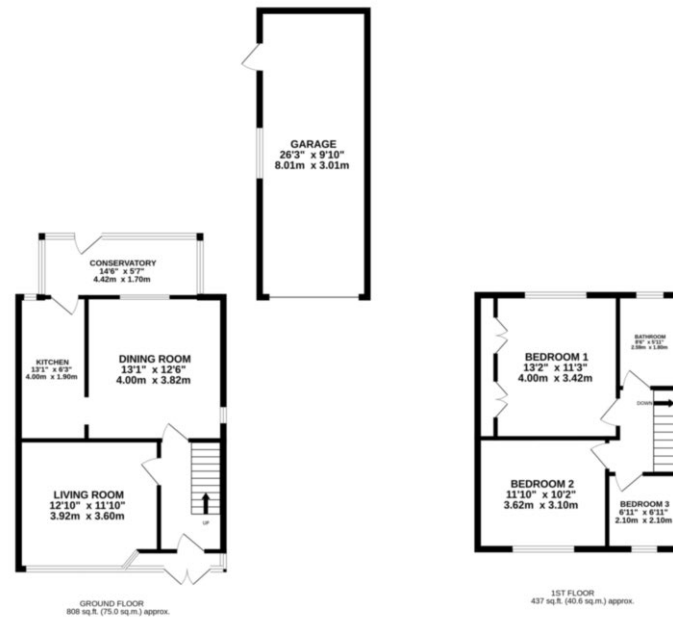
## TENURE

Leasehold

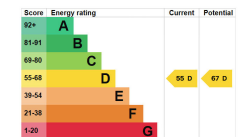
## LOCAL AUTHORITY

Warrington Borough Council - Council Tax Band C





NOTICE Gascoigne Halman for themselves and for the vendors or lessors of this property whose agents they are give notice that: (i) the particulars are set out as a general outline only for the guidance of intending purchasers or lessees, and do not constitute, nor constitute part of, an offer or contract; (ii) all descriptions, dimensions, references to condition and necessary permissions for use and occupation, and other details are given in good faith and are believed to be correct but any intending purchasers or tenants should not rely on them as statements or representations of fact but must satisfy themselves by inspection or otherwise as to the correctness of each of them; (iii) no person in the employment of Gascoigne Halman has any authority to make or give any representation or warranty whatever in relation to this property.



## STOCKTON HEATH OFFICE

01925 860 400

stocktonheath@gascoignealman.co.uk

29 Walton Road, Stockton Heath, WA4 6NJ

**GASCOIGNE  
HALMAN**