



WARE & CO
estate and letting agents

3 Waterloo Cottages Mountway Road, Bishops Hull - TA1 5DS
£210,000

3 Waterloo Cottages

- Charming and well-modernised terraced cottage
- Available with no onward chain
- Sought-after Bishops Hull village location
- Cosy living room opening into dining area
- Fitted kitchen to the rear
- Two first-floor bedrooms
- Three-piece bathroom suite
- Enclosed rear courtyard adjoining the property
- Private patio garden and additional enclosed seating area
- Useful lock-up store/workshop and excellent access to Musgrove Park Hospital

TOTAL FLOOR AREA 52 sq.m.

TENURE Freehold

COUNCIL TAX Somerset Council Tax Band B. Charges payable for 2026/27 - £2,103.24

SERVICES Main services of gas, electricity, water and drainage are connected. Broadband speeds of up to 1800mbps are available and good mobile signal across the four main networks (source: Ofcom)

EPC Energy Efficiency Rating: C





Available with **no onward chain**, this charming and beautifully modernised terraced cottage occupies a delightful position in the heart of the highly sought-after village of Bishops Hull. Offering characterful accommodation together with useful outside storage and private garden spaces, the property is ideally suited to first-time buyers, downsizers, investors or those seeking a conveniently located home close to excellent amenities.

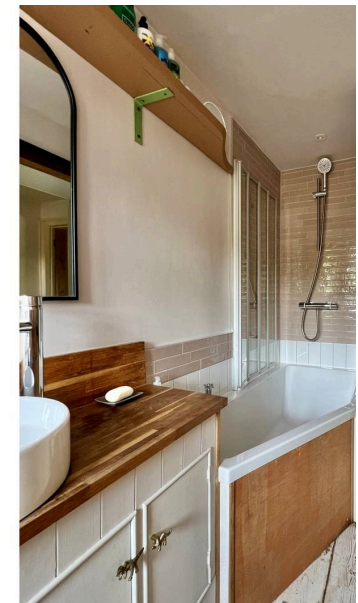
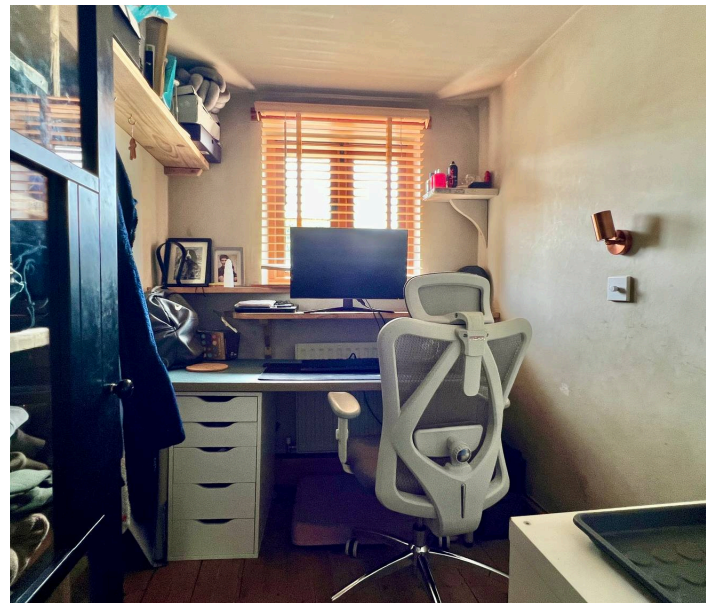
The accommodation is well presented throughout and begins with a cosy living room to the front of the property, creating a welcoming space to relax. This opens through to a dining area, providing an ideal setting for everyday living and entertaining, with a fitted kitchen positioned beyond.

A central staircase rises to the first floor where there are two bedrooms and a well-appointed three-piece bathroom suite.

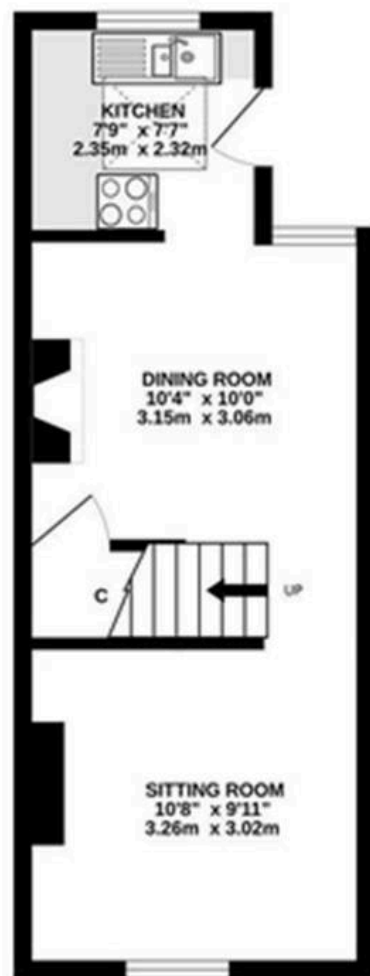
Outside, the property benefits from a small enclosed courtyard immediately adjoining the rear of the cottage. Across a shared access pathway is a lock-up store cupboard and further private outdoor area comprising a paved patio, a useful lock-up store/workshop and an additional enclosed patio garden beyond, providing excellent storage and outdoor seating space.

Combining character, convenience and practicality, this delightful cottage enjoys an enviable village setting close to highly regarded schools, local amenities and Musgrove Park Hospital.

Bishops Hull is one of Taunton's most desirable residential villages, offering a wonderful blend of village character and town convenience. The area is particularly popular with families and professionals thanks to its excellent schooling, attractive surroundings and easy access to Taunton town centre. Local amenities include shops, public houses, recreational facilities and regular transport links, while Musgrove Park Hospital is within easy reach. The village also enjoys convenient access to the county town's extensive shopping, leisure and transport facilities, including the mainline railway station and links to the M5 motorway.



GROUND FLOOR
300 sq.ft. (27.9 sq.m.) approx.



1ST FLOOR
258 sq.ft. (23.9 sq.m.) approx.



TOTAL FLOOR AREA: 558 sq.ft. (51.8 sq.m.) approx.

While every attempt has been made to ensure the accuracy of the description contained here, measurements of doors, windows, rooms and any other items are approximate and no responsibility is taken for any error, omission or mis-statement. This plan is for illustrative purposes only and should be used as such by any prospective purchaser. The services, systems and appliances shown have not been listed and no guarantee as to their operability or efficiency can be given.
Made with Metagen 1/2014



Ware & Co

Ware & Co, 53 Bridge Street - TA1 1TP

01823259604 • info@wareandco.com • www.wareandco.com

