



**Clapham Common North Side,
£625,000**

Dexters



Clapham Common North Side,

A beautiful, three double bedroom apartment measuring just shy of 1,000 sq ft set within a beautiful Georgian conversion. Situated on the sought after Clapham Common North Side within the gated Gilmore House development. Comprising a large open plan reception/kitchen, three double bedrooms and two bathrooms. The property benefits further from a garden (communal), off street parking, has a share of the freehold and is being sold chain free.

As you enter the property you have a wide and welcoming hallway and to the right of the hallway you enter through into a large open plan reception/kitchen/dining room with plenty of space to entertain. The family bathroom is located next door as is a large storage cupboard. The Principal bedroom with en-suite is found at the end of the hallway and two further double bedrooms complete the accommodation. You have a large communal garden and off street gated parked located out the front of the building.

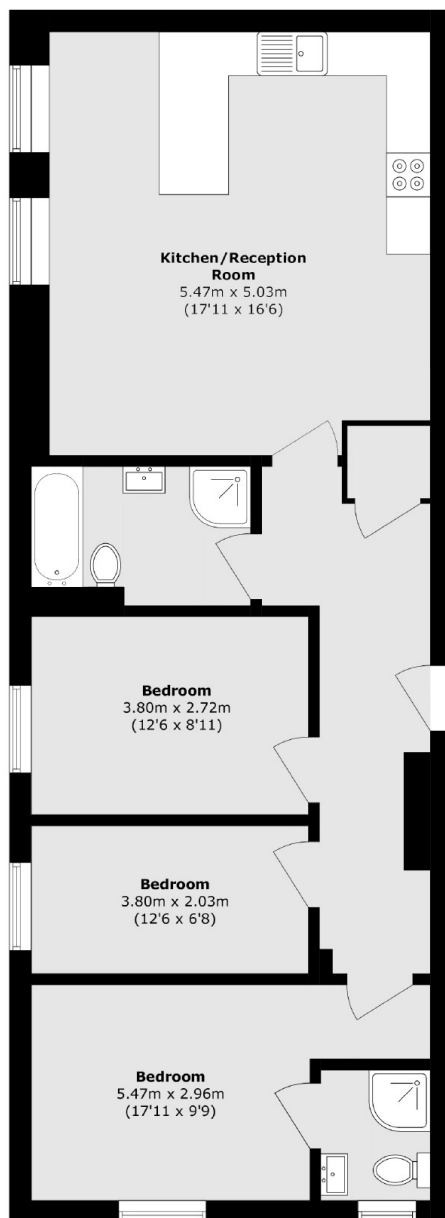
Clapham Common North Side overlooks Clapham Common and has convenient access to the bars and restaurants of both Northcote Road and Clapham Old Town. Clapham Junction railway station & Clapham Common Underground station are a short stroll away.

Features

- Open Plan Reception/Kitchen
- Three Double Bedrooms
- Two Bathrooms
- Off Street Parking
- Share Of Freehold
- Chain Free



Clapham Common North Side, London, SW4



Total area (approx.): 87.6 sq. m (942.9 sq. ft)