



Brookbank Road, SE13

£1,075,000

Available for the first time in nearly thirty years, this lovingly maintained Edwardian family home is set on a desirable residential road just moments from Hilly Fields. There are four bedrooms, a downstairs WC/utility room and two generous reception rooms, one which opens onto a peaceful and well presented south-facing garden.

Situated just moments from the popular Hilly Fields park, Brookbank Road enjoys a prime location with St Johns, Lewisham and Ladywell stations all within walking distance, offering superb transport links into the City and Canary Wharf. Families will also appreciate the excellent choice of outstanding primary and secondary

Features

- Two Reception Rooms
- Four Bedrooms
- Charming Edwardian House
- Close To Hilly Fields
- South Facing Garden
- Transport Links Nearby



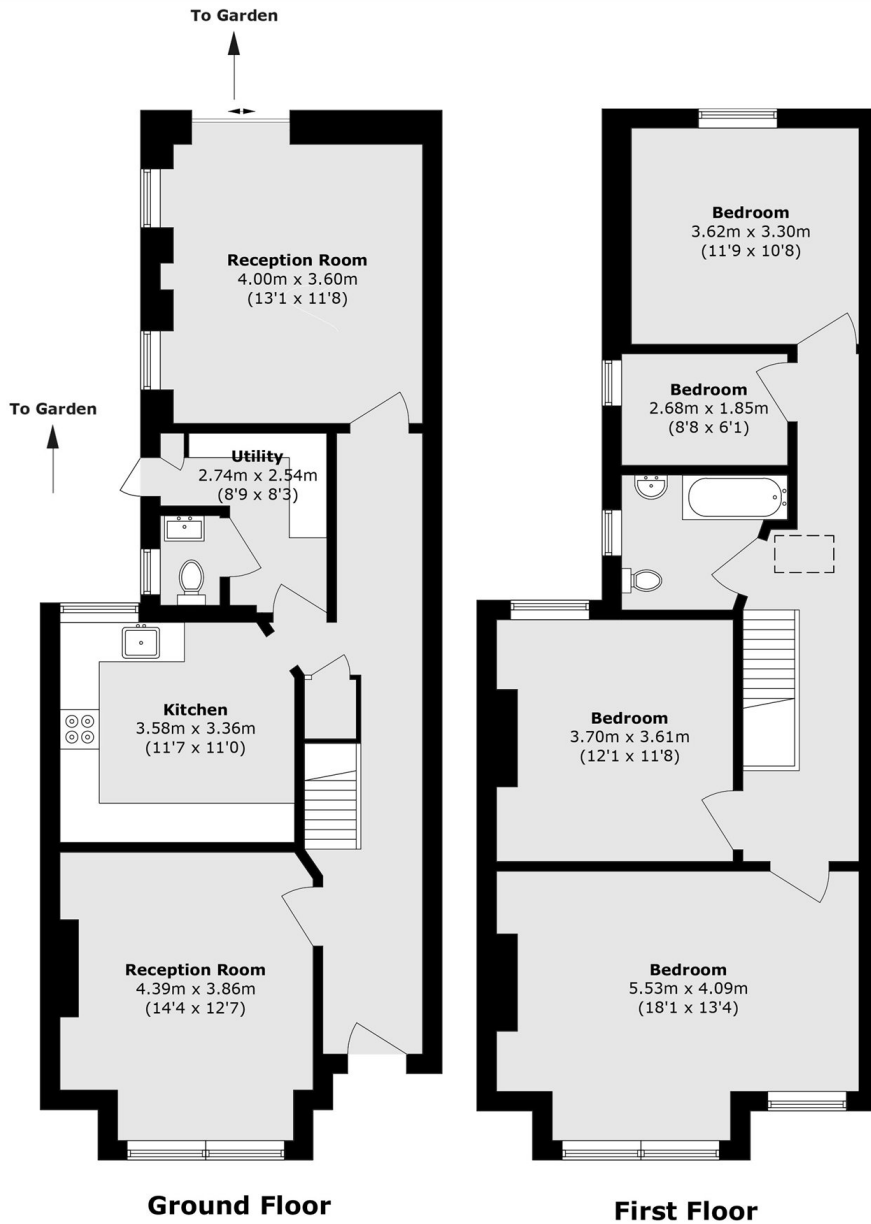
Brookbank Road, SE13

From the moment you step inside, the home's Edwardian character is immediately apparent, with beautiful original features including decorative cornicing and ceiling roses and original stained glass windows throughout. To the front of the property, the reception room provides a bright and welcoming living space, while to the rear, a characterful living room is accompanied by sliding doors that open onto a beautifully landscaped, south-facing garden, creating an ideal setting for both everyday family life and entertaining.

Upstairs, the first floor offers three generous double bedrooms along with a versatile fourth bedroom, perfect as a nursery and home office. Original fireplaces and pine flooring add further charm and warmth, enhancing the character and appeal of this wonderful family home.



Brookbank Road,
London, SE13



Total area (approx.): 139.7 sq. m (1503.7 sq. ft)