



Flat 1202, 8 Eight Casson Square, London, SE1 7GU
£5,200 Per month



Flat 1202, 8 Eight Casson Square, London, SE1 7GU

£5,200 Per month

Brand new and luxurious two-bedroom apartment available to rent on the 11th floor of the beautifully designed Eight Casson Square development, with breathtaking views over The Shard. The apartment offers two double bedrooms, two bathrooms, and a bespoke open-plan kitchen/reception room framed by stunning skyline views.

Set in the heart of London's most vibrant riverside destination, Eight Casson Square sits moments from Waterloo Station and alongside the London Eye and Jubilee Gardens. Residents benefit from a 24-hour concierge, fully equipped gym, Olympic-sized swimming pool, sauna, and treatment rooms. With all the attractions and amenities of Central London on the doorstep, this is an exceptional opportunity to experience the very best of city living.

Description



Situation

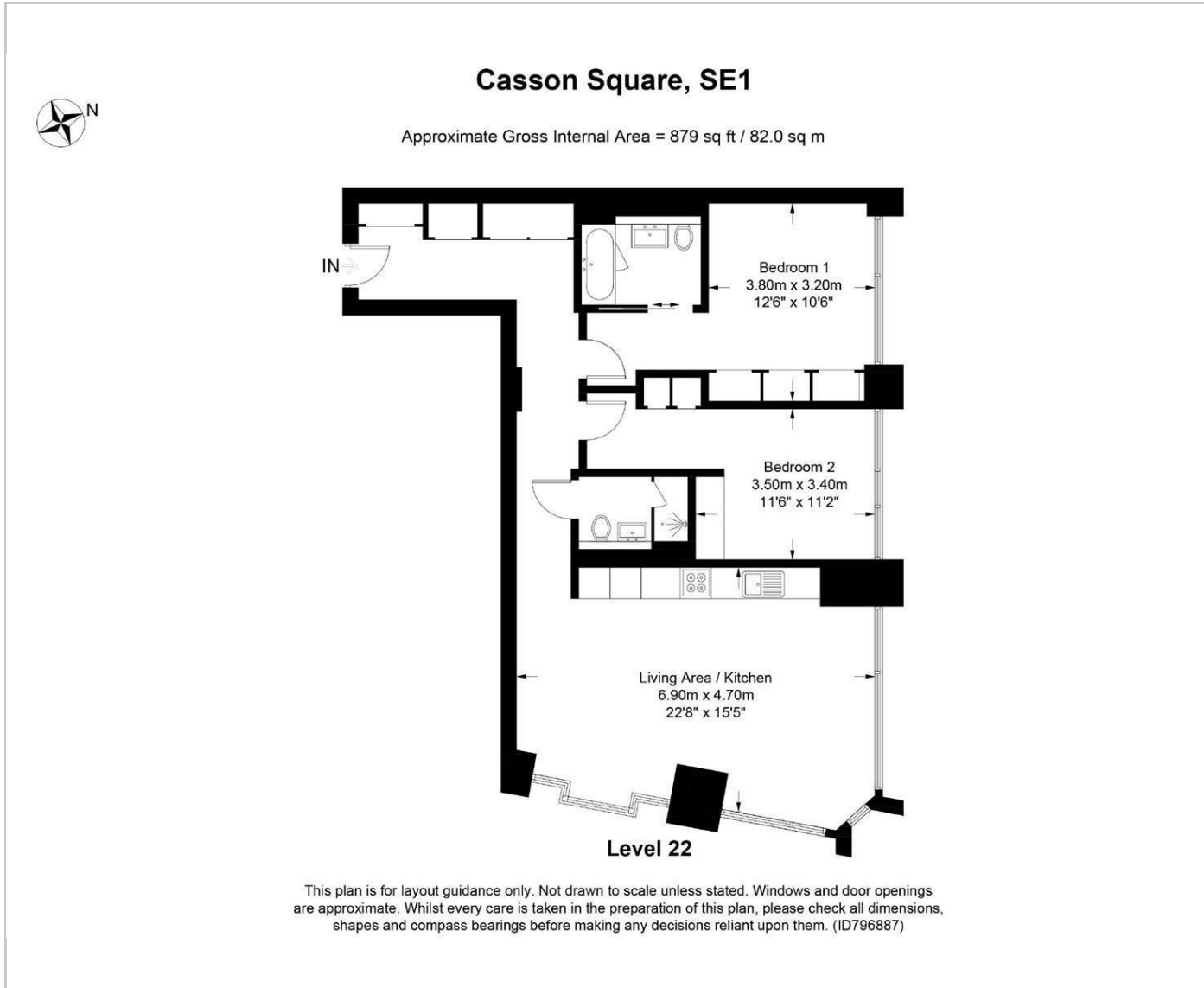
Furnished/unfurnished

Council Tax Band:

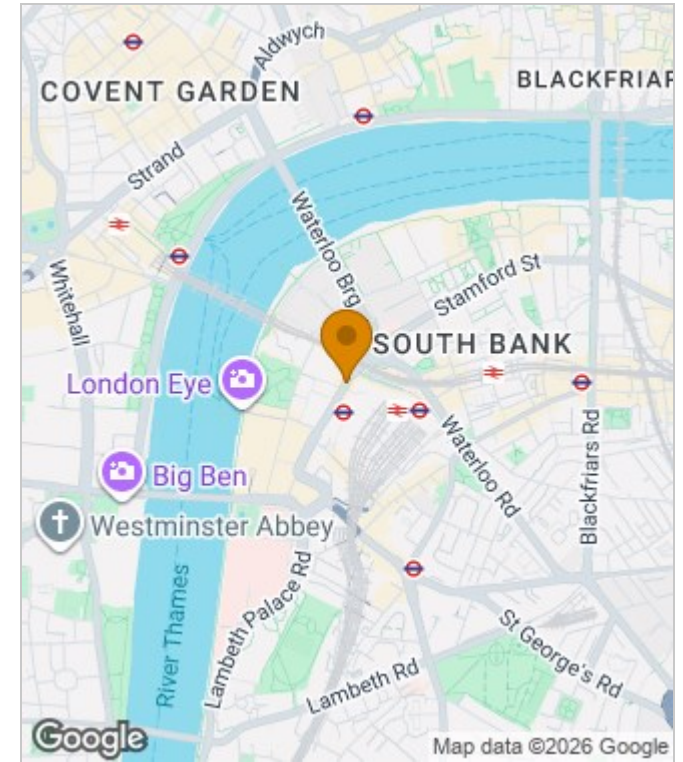
Available:



Floor Plans



Area Map



Energy Performance Graph

Energy Efficiency Rating		Current	Potential
Very energy efficient - lower running costs			
(92 plus) A			
(81-91) B		85	85
(69-80) C			
(55-68) D			
(39-54) E			
(21-38) F			
(1-20) G			
Not energy efficient - higher running costs			
England & Wales		EU Directive 2002/91/EC	

These particulars, whilst believed to be accurate are set out as a general outline only for guidance and do not constitute any part of an offer or contract. Intending purchasers should not rely on them as statements of representation of fact, but must satisfy themselves by inspection or otherwise as to their accuracy. No person in this firm's employment has the authority to make or give any representation or warranty in respect of the property.