



Gatti House

Strand, WC2R

£16,000 per month
(£3,692.31 per week)

Chestertons are proud to offer this one of kind rental apartment: An 1800+ sqft two bedroom, two bathroom Grade II listed property with wonderful original period features, designed with meticulous attention to detail.

CHESTERTONS



Gatti House

Strand, WC2R

•



Located on the Strand, this is a one of kind rental apartment: An 1800+ sqft two bedroom, two bathroom Grade II listed property oozing with history and original period features, designed with meticulous attention to detail.

The apartment benefits from a private patio terrace area with a spacious living area/entertaining space with three large floor to ceiling windows, allowing for a real abundance of natural light.

The apartment is perfect for sharers or a couple wanting to be located in the epicentre of London's heartbeat. Great transport links from Charing Cross, Embankment, and Temple underground

Minimum Term: 12 months
Deposit Required: £22,153.85
Local Authority: Westminster
Council Tax Band: G
EPC Rating: C
Furnished

Score	Energy rating	Current	Potential
92+	A		
81-91	B		
69-80	C	79 C	86 B
55-68	D		
39-54	E		
21-38	F		
1-20	G		

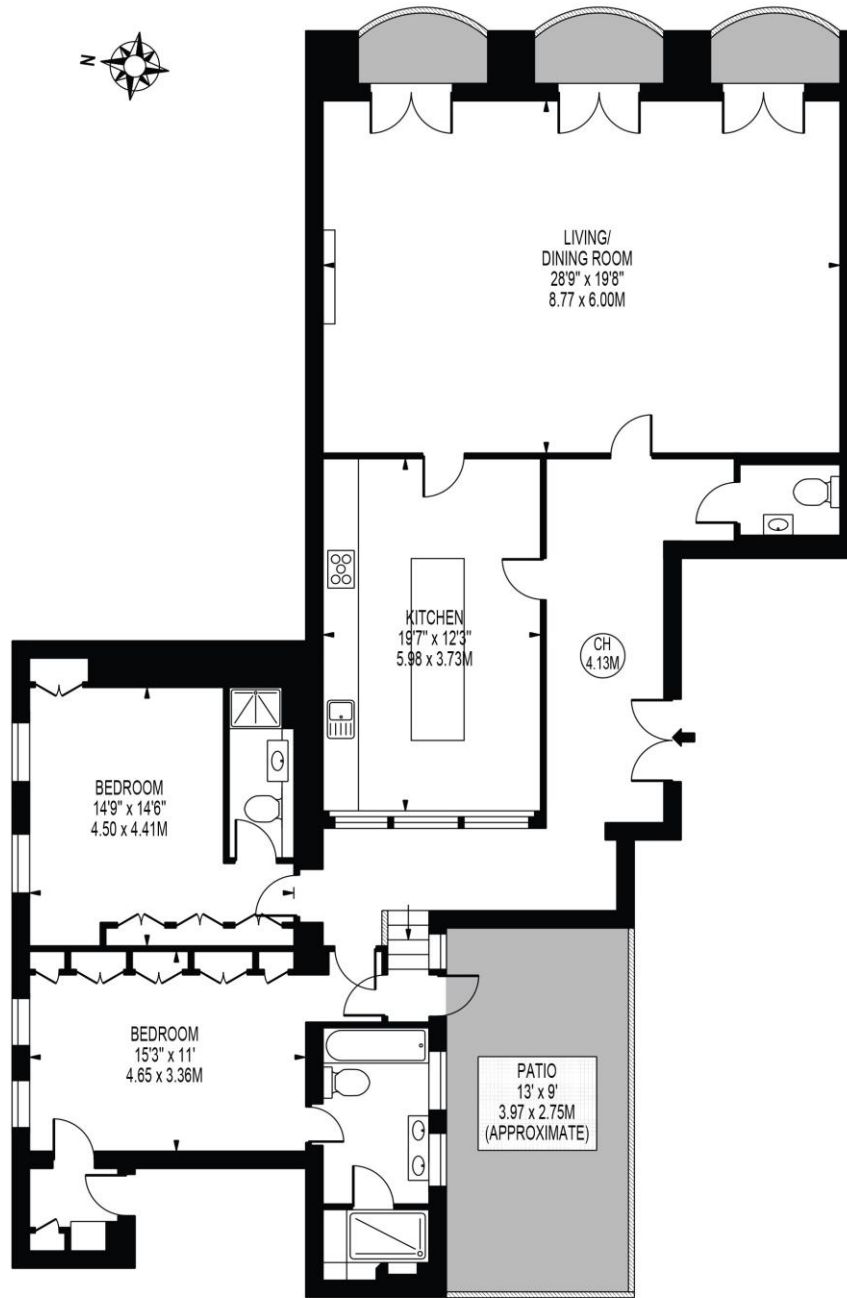
Chestertons Covent Garden Lettings

196 Shaftesbury Avenue
 Covent Garden
 London
 WC2H 8JF
 coventgardenlettingsusers@chestertons.co.uk
 02030408400
 chestertons.co.uk

Additional tenant charges apply (fees apply to non-AST tenancies only)
 Tenancy Agreement Fee: £300
 References per Tenant/Guarantor: £60
 Inventory check (approx. £100 – £250 inc. VAT)
 chestertons.co.uk/property-to-rent/applicable-fees

GATTI HOUSE

APPROXIMATE GROSS INTERNAL FLOOR AREA: 1666 SQ FT - 154.82 SQ M



FIRST FLOOR

FOR ILLUSTRATION PURPOSES ONLY

THIS FLOOR PLAN SHOULD BE USED AS A GENERAL OUTLINE FOR GUIDANCE ONLY AND DOES NOT CONSTITUTE IN WHOLE OR IN PART AN OFFER OR CONTRACT. ANY INTENDING PURCHASER OR LESSEE SHOULD SATISFY THEMSELVES BY INSPECTION, SEARCHES, ENQUIRIES AND FULL SURVEY AS TO THE CORRECTNESS OF EACH STATEMENT. ANY AREAS, MEASUREMENTS OR DISTANCES QUOTED ARE APPROXIMATE AND SHOULD NOT BE USED TO VALUE A PROPERTY OR BE THE BASIS OF ANY SALE OR LET.

